

Product datasheet

Recombinant Mouse Galectin 3 protein ab137144

[5 Images](#)

Description

Product name	Recombinant Mouse Galectin 3 protein
Purity	> 95 % SDS-PAGE. ab137144 is purified using conventional chromatography techniques.
Expression system	Escherichia coli
Accession	P16110
Protein length	Full length protein
Animal free	No
Nature	Recombinant
Species	Mouse
Sequence	<pre> MGSSHHHHHH SSGLVPRGSH MGSMADSFSL NDALAGSGNP NPQGYPGA WG NQPGAGGYPG AAYPGA YPGQ APPGAYPGQA PPGAYPGQAP PSAYPGPTAP GAYPGPTAPG AYPGSTAPGA FPGQPGAPGA YPSAPGGYPA AGPYGVPAGP LTPYDLPLP GGVMRMLIT IMGTVKPNAN RVLDFRRGN DVAHFHFNPRF NENRRRVIVC NTKQDNNWGK EERQSAFPFE SGKPFKIQL VEADHFKVAV NDAHLLQYNH RMKNLREISQ LGISGDITLT SANHAMI </pre>
Predicted molecular weight	30 kDa including tags
Amino acids	1 to 264
Tags	His tag N-Terminus

Specifications

Our [Abpromise guarantee](#) covers the use of **ab137144** in the following tested applications.

The application notes include recommended starting dilutions; optimal dilutions/concentrations should be determined by the end user.

Applications	Mass Spectrometry SDS-PAGE
Mass spectrometry	MALDI-TOF
Form	Liquid

Preparation and Storage

Stability and Storage

Shipped at 4°C. Store at +4°C short term (1-2 weeks). Upon delivery aliquot. Store at -20°C or -80°C. Avoid freeze / thaw cycle.

pH: 8.00

Constituents: 0.02% DTT, 0.32% Tris HCl, 0.06% EDTA, 50% Glycerol (glycerin, glycerine), 0.88% Sodium chloride

General Info

Function

Galactose-specific lectin which binds IgE. May mediate with the alpha-3, beta-1 integrin the stimulation by CSPG4 of endothelial cells migration. Together with DMBT1, required for terminal differentiation of columnar epithelial cells during early embryogenesis.

Tissue specificity

A major expression is found in the colonic epithelium. It is also abundant in the activated macrophages.

Sequence similarities

Contains 1 galectin domain.

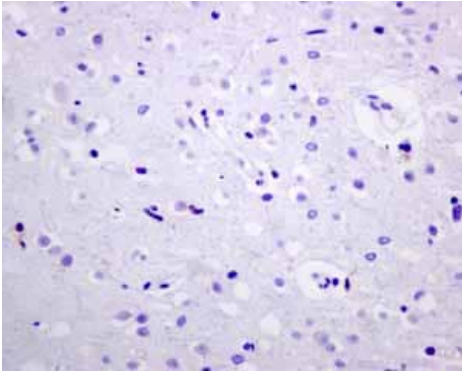
Cellular localization

Nucleus. Cytoplasmic in adenomas and carcinomas. May be secreted by a non-classical secretory pathway and associate with the cell surface.

Images

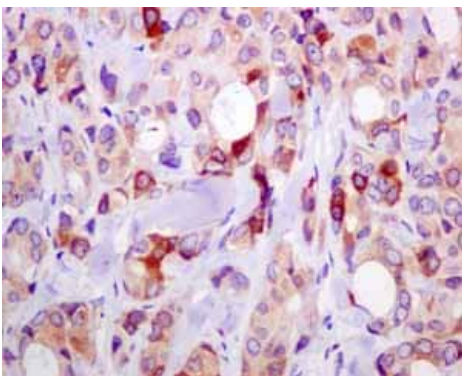


15% SDS-PAGE analysis of 3 µg ab137144.



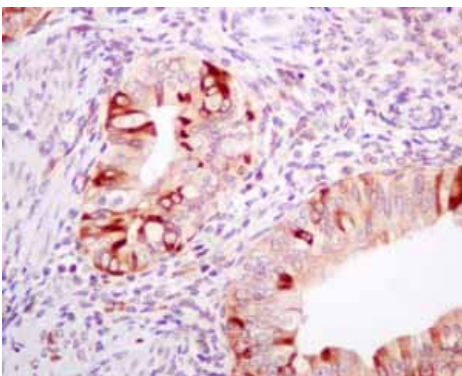
Immunohistochemistry (Formalin/PFA-fixed paraffin-embedded sections) - Recombinant Mouse Galectin 3 protein (ab137144)

Immunohistochemical analysis of paraffin embedded Normal Human Brain tissue using ab137144 showing -ve staining.



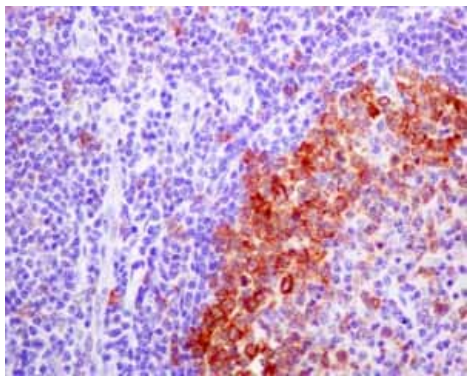
Immunohistochemistry (Formalin/PFA-fixed paraffin-embedded sections) - Recombinant Mouse Galectin 3 protein (ab137144)

Immunohistochemical analysis of paraffin embedded Human Breast carcinoma tissue using ab137144 showing +ve staining.



Immunohistochemistry (Formalin/PFA-fixed paraffin-embedded sections) - Recombinant Mouse Galectin 3 protein (ab137144)

Immunohistochemical analysis of paraffin embedded Normal Human Uterus tissue using ab137144 showing +ve staining.



Immunohistochemical analysis of paraffin embedded Normal Human Tonsil tissue using ab137144 showing +ve staining.

Immunohistochemistry (Formalin/PFA-fixed paraffin-embedded sections) - Recombinant Mouse Galectin 3 protein (ab137144)

Please note: All products are "FOR RESEARCH USE ONLY. NOT FOR USE IN DIAGNOSTIC PROCEDURES"

Our Abpromise to you: Quality guaranteed and expert technical support

- Replacement or refund for products not performing as stated on the datasheet
- Valid for 12 months from date of delivery
- Response to your inquiry within 24 hours
- We provide support in Chinese, English, French, German, Japanese and Spanish
- Extensive multi-media technical resources to help you
- We investigate all quality concerns to ensure our products perform to the highest standards

If the product does not perform as described on this datasheet, we will offer a refund or replacement. For full details of the Abpromise, please visit <https://www.abcam.com/abpromise> or contact our technical team.

Terms and conditions

- Guarantee only valid for products bought direct from Abcam or one of our authorized distributors