

Product datasheet

Recombinant mouse Lactate Dehydrogenase protein (His tag) ab222451

1 Image

Description

Product name	Recombinant mouse Lactate Dehydrogenase protein (His tag)	
Biological activity	Specific activity is > 250 units/mg, and is defined as the amount of enzyme that converts 1.0 µmole of pyruvate to L-lactate per minute at pH 7.5 at 37C.	
Purity	> 95 % SDS-PAGE. Purified by using conventional chromatography techniques.	
Endotoxin level	< 1.000 Eu/µg	
Expression system	Baculovirus infected insect cells	
Accession	P06151	
Protein length	Full length protein	
Animal free	No	
Nature	Recombinant	
Species	Mouse	
Sequence	<pre> MATLKDQLVNLKKEEQAPQNKITVVGVGAVGMACAISILM KDLADELAL VDVMEDKCLKGEMMDLQHGSLFLKTPKIVSSKDYCVTANS KLVITAGARQ QEGESRLNLVQRNVNIFKFIIPNMKYSPHCKLLVSNPVDILT YVAWKI SGFPKNRVIGSGCNLDSARFRYLMGERLGVHALSCHGWV LGEHGDSSVPV WSGVNVAGVSLKSLNPELGTADADKEQWKEVHKQVVDV AYEVIKLGYSW AIGLSVADLAESIMKNLRRVHPITMIKGLYGINEDVFLSVP CILGQNGI SDVVKVTLTPEEEARLKKSADTLWGIQKELQFLEHHHHHH </pre>	
Predicted molecular weight	38 kDa including tags	
Amino acids	1 to 332	
Tags	His tag C-Terminus	
Additional sequence information	This product is the mature full length protein from aa 1 to 332.	

Specifications

Our [Abpromise guarantee](#) covers the use of **ab222451** in the following tested applications.

The application notes include recommended starting dilutions; optimal dilutions/concentrations should be determined by the end user.

Applications	Functional Studies SDS-PAGE
Form	Liquid

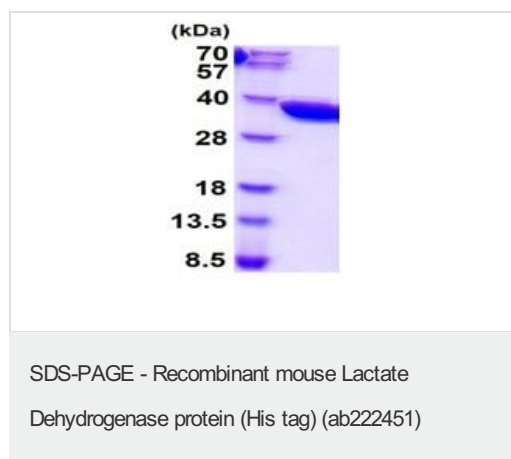
Preparation and Storage

Stability and Storage	Shipped at 4°C. Store at +4°C short term (1-2 weeks). Upon delivery aliquot. Store at -20°C long term. Avoid freeze / thaw cycle. pH: 7.40 Constituents: 10% Glycerol (glycerin, glycerine), PBS This product is an active protein and may elicit a biological response in vivo, handle with caution.
------------------------------	--

General Info

Pathway	Fermentation; pyruvate fermentation to lactate; (S)-lactate from pyruvate: step 1/1.
Involvement in disease	Defects in LDHA are the cause of glycogen storage disease type 11 (GSD11) [MIM:612933]. A metabolic disorder that results in exertional myoglobinuria, pain, cramps and easy fatigue.
Sequence similarities	Belongs to the LDH/MDH superfamily. LDH family.
Post-translational modifications	ISGylated.
Cellular localization	Cytoplasm.

Images



3 µg ab222451 analyzed by 15% SDS-PAGE.

Please note: All products are "FOR RESEARCH USE ONLY. NOT FOR USE IN DIAGNOSTIC PROCEDURES"

Our Abpromise to you: Quality guaranteed and expert technical support

- Replacement or refund for products not performing as stated on the datasheet
- Valid for 12 months from date of delivery
- Response to your inquiry within 24 hours

- We provide support in Chinese, English, French, German, Japanese and Spanish
- Extensive multi-media technical resources to help you
- We investigate all quality concerns to ensure our products perform to the highest standards

If the product does not perform as described on this datasheet, we will offer a refund or replacement. For full details of the Abpromise, please visit <https://www.abcam.com/abpromise> or contact our technical team.

Terms and conditions

- Guarantee only valid for products bought direct from Abcam or one of our authorized distributors