

## Product datasheet

# Recombinant mouse LIF protein (Active) ab269188

[2 Images](#)

### Description

---

<b>Product name</b>	Recombinant mouse LIF protein (Active)	
<b>Biological activity</b>	IL-6 production by M1 cells $\leq 1$ ng/mL; $\geq 1.0 \times 10^6$ units/mg.	
<b>Purity</b>	> 95 % SDS-PAGE. NULL	
<b>Endotoxin level</b>	< 1.000 Eu/ $\mu$ g	
<b>Expression system</b>	Escherichia coli	
<b>Accession</b>	<a href="#">P09056</a>	
<b>Protein length</b>	Full length protein	
<b>Animal free</b>	No	
<b>Nature</b>	Recombinant	
<b>Species</b>	Mouse	
<b>Sequence</b>	MSPLPITPVN ATCAIRHPCH GNLMNQIKNQ LAQLNGSANA LFISYYTAQG EPPFNVEKL CAPNMTDFPS FHGNGTEKTK LVELYRMVAY LSASLTNITR DQKVLNPTAV SLQVKLNATI DVMRGLLSNV LCRLCNKYRV GHVDVPPVVPD HSDKEAFQRK KLGCQLLGTY KQVISVVVQA F	
<b>Predicted molecular weight</b>	22 kDa	
<b>Amino acids</b>	24 to 203	
<b>Additional sequence information</b>	Mature chain	

### Specifications

---

Our [Abpromise guarantee](#) covers the use of **ab269188** in the following tested applications.

The application notes include recommended starting dilutions; optimal dilutions/concentrations should be determined by the end user.

<b>Applications</b>	Functional Studies SDS-PAGE
<b>Form</b>	Lyophilized

### Preparation and Storage

---

## Stability and Storage

Shipped at Room Temperature. Upon delivery aliquot. Store at -20°C or -80°C. Working aliquots stored with a carrier protein are stable for at least 3 months at -20°C to -80°C..

Constituent: 0.1% Trifluoroacetic acid

Lyophilized from

This product is an active protein and may elicit a biological response in vivo, handle with caution.

## Reconstitution

Sterile 10 mM acetic acid at 0.1 mg/mL

## General Info

---

### Function

LIF has the capacity to induce terminal differentiation in leukemic cells. Its activities include the induction of hematopoietic differentiation in normal and myeloid leukemia cells, the induction of neuronal cell differentiation, and the stimulation of acute-phase protein synthesis in hepatocytes.

### Sequence similarities

Belongs to the LIF/OSM family.

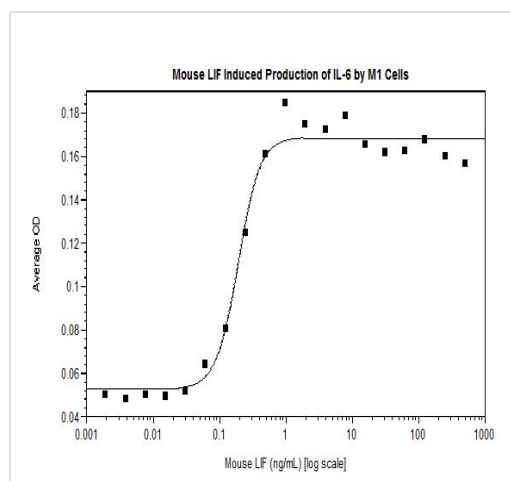
### Cellular localization

Secreted.

---

## Images

---

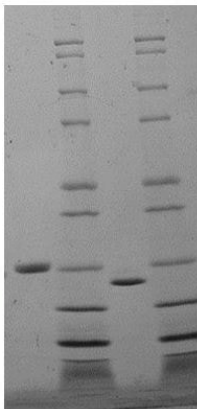


Biological activity graph of ab269188

Functional Studies - Recombinant mouse LIF protein  
(Active) (ab269188)

Reduced: + -

MW  
(kDa): 97  
66  
55  
36  
31  
21  
14  
6



SDS-PAGE - Recombinant mouse LIF protein  
(Active) (ab269188)

SDS-PAGE analysis of ab269188 at 1ug/lane under (-) non-reducing and (+) reducing conditions. 4-20% Tris glycine gel. Stained with coomassie blue.

**Please note:** All products are "FOR RESEARCH USE ONLY. NOT FOR USE IN DIAGNOSTIC PROCEDURES"

### Our Abpromise to you: Quality guaranteed and expert technical support

---

- Replacement or refund for products not performing as stated on the datasheet
- Valid for 12 months from date of delivery
- Response to your inquiry within 24 hours
- We provide support in Chinese, English, French, German, Japanese and Spanish
- Extensive multi-media technical resources to help you
- We investigate all quality concerns to ensure our products perform to the highest standards

If the product does not perform as described on this datasheet, we will offer a refund or replacement. For full details of the Abpromise, please visit <https://www.abcam.com/abpromise> or contact our technical team.

### Terms and conditions

---

- Guarantee only valid for products bought direct from Abcam or one of our authorized distributors