

Product datasheet

Recombinant Mouse LRPAP1 protein ab201883

1 Image

Description

<b>Product name</b>	Recombinant Mouse LRPAP1 protein
<b>Purity</b>	> 90 % SDS-PAGE. ab201883 was purified by using conventional chromatography techniques.
<b>Expression system</b>	Escherichia coli
<b>Accession</b>	<a href="#">P55302</a>
<b>Protein length</b>	Full length protein
<b>Animal free</b>	No
<b>Nature</b>	Recombinant
<b>Species</b>	Mouse
<b>Sequence</b>	<p>MGSSHHHHHH SSGLVPRGSH MGSQPIAGHG            GKYSREKNEP EMAAKRESGE EFRMEKLNQL            WEKAKRLHLS PVRLAELHSD LKIQERDELN            WKKLKVEGLD KDGEKEAKLI HNLNVILARY            GLDGRKDAQM VHSNALNEDT QDELGDPRLE            KLWHKAKTSG KFSSEELDKL WREFLHYKEK            IQEYNVLLDT LSRAEEGYEN LLSPSDMAHI KSDLISKHS            ELKDRLRSIN QGLDRLRKVS HQGYGSTTEF            EEPRVIDLWD LAQSANFTEK ELESFREELK            HFEAKIEKHN HYQKQLEISH QKLKHVESIG DPEHISRNKE            KYVLLEEKTK ELGYKVKKHL QDLSSRVSRA RHNEL</p>
<b>Predicted molecular weight</b>	41 kDa including tags
<b>Amino acids</b>	29 to 360
<b>Tags</b>	His tag N-Terminus
<b>Additional sequence information</b>	This product is for the mature full length protein from aa 29 to 360. The signal peptide is not included. (NP_038615)

Specifications

Our [Abpromise guarantee](#) covers the use of **ab201883** in the following tested applications.

The application notes include recommended starting dilutions; optimal dilutions/concentrations should be determined by the end user.

<b>Applications</b>	Mass Spectrometry
	SDS-PAGE

<b>Mass spectrometry</b>	MALDI-TOF
<b>Form</b>	Liquid

## Preparation and Storage

---

<b>Stability and Storage</b>	Shipped at 4°C. Store at +4°C short term (1-2 weeks). Upon delivery aliquot. Store at -20°C or -80°C. Avoid freeze / thaw cycle.  pH: 7.40 Constituents: 90% PBS, 10% Glycerol (glycerin, glycerine)
------------------------------	---

## General Info

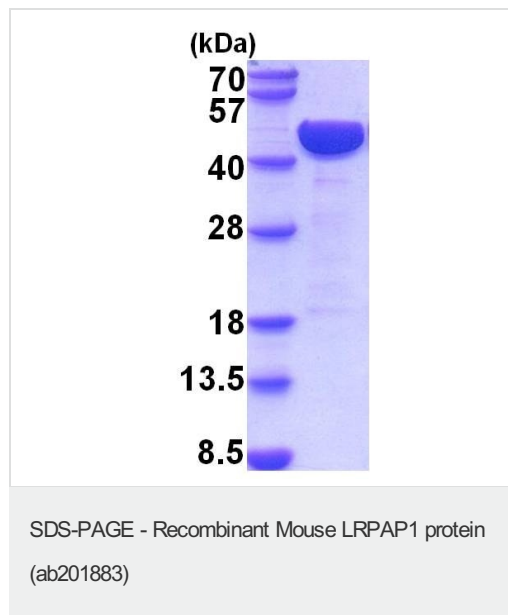
---

<b>Function</b>	Interacts with LRP1/alpha-2-macroglobulin receptor and glycoprotein 330.
<b>Involvement in disease</b>	Note=In complex with the alpha-2-MR or gp330, it may have some role in the pathogenesis of membrane glomerular nephritis.
<b>Sequence similarities</b>	Belongs to the alpha-2-MRAP family.
<b>Post-translational modifications</b>	N-glycosylated.
<b>Cellular localization</b>	Endoplasmic reticulum. Cytoplasm. Cell surface. Intracellular and associated with cell surface receptors. Found in the endoplasmic reticulum.

---

## Images

---



15% SDS PAGE analysis of ab201883 (3 µg).

**Please note:** All products are "FOR RESEARCH USE ONLY. NOT FOR USE IN DIAGNOSTIC PROCEDURES"

**Our Abpromise to you: Quality guaranteed and expert technical support**

---

- Replacement or refund for products not performing as stated on the datasheet
- Valid for 12 months from date of delivery
- Response to your inquiry within 24 hours
  
- We provide support in Chinese, English, French, German, Japanese and Spanish
- Extensive multi-media technical resources to help you
- We investigate all quality concerns to ensure our products perform to the highest standards

If the product does not perform as described on this datasheet, we will offer a refund or replacement. For full details of the Abpromise, please visit <https://www.abcam.com/abpromise> or contact our technical team.

### **Terms and conditions**

---

- Guarantee only valid for products bought direct from Abcam or one of our authorized distributors