

Product datasheet

Recombinant Mouse PD-L1 protein ab130039

3 References 1 Image

Description

Product name	Recombinant Mouse PD-L1 protein
Purity	> 85 % SDS-PAGE. ab130039 is purified using conventional chromatography.
Expression system	Escherichia coli
Accession	Q9EP73
Protein length	Protein fragment
Animal free	No
Nature	Recombinant
Species	Mouse
Sequence	<pre> MGSSHHHHHH SSGLVPRGSH MGSHMFTITA PKDLYVVEYG SNVTMECRFP VERELDLLAL VYWEKEDEQ VIQFVAGEED LKPQHSNFRG RASLPKDQLL KGNAALQITD VKLQDAGVYC CIISYGGADY KRITLKVNAP YRKINQRISV DPATSEHELI CQAEGYPEAE VIMTNSDHQP VSGKRSVTTT RTEGMLLNVT SSLRVNATAN DVFYCTFWRS QPGQNHTAEL IPELPATHP PQNRTH </pre>
Predicted molecular weight	28 kDa including tags
Amino acids	19 to 239
Tags	His tag N-Terminus

Specifications

Our [Abpromise guarantee](#) covers the use of **ab130039** in the following tested applications.
The application notes include recommended starting dilutions; optimal dilutions/concentrations should be determined by the end user.

Applications	SDS-PAGE Mass Spectrometry
Mass spectrometry	MALDI-TOF
Form	Liquid

Preparation and Storage

Stability and Storage

Shipped at 4°C. Store at +4°C short term (1-2 weeks). Upon delivery aliquot. Store at -20°C or -80°C. Avoid freeze / thaw cycle.

pH: 8.00

Constituents: 0.32% Tris HCl, 10% Glycerol (glycerin, glycerine), 0.88% Sodium chloride

General Info**Function**

Involved in the costimulatory signal, essential for T-cell proliferation and production of IL10 and IFNG, in an IL2-dependent and a PDCD1-independent manner. Interaction with PDCD1 inhibits T-cell proliferation and cytokine production.

Tissue specificity

Highly expressed in the heart, skeletal muscle, placenta and lung. Weakly expressed in the thymus, spleen, kidney and liver. Expressed on activated T- and B-cells, dendritic cells, keratinocytes and monocytes.

Sequence similarities

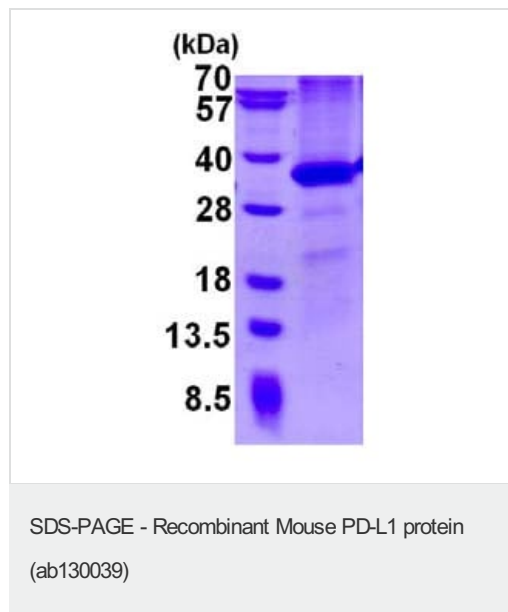
Belongs to the immunoglobulin superfamily. BTN/MOG family.

Contains 1 Ig-like C2-type (immunoglobulin-like) domain.

Contains 1 Ig-like V-type (immunoglobulin-like) domain.

Cellular localization

Cell membrane and Endomembrane system.

Images

15% SDS-PAGE analysis of ab130039 (3µg).

Please note: All products are "FOR RESEARCH USE ONLY. NOT FOR USE IN DIAGNOSTIC PROCEDURES"

Our Abpromise to you: Quality guaranteed and expert technical support

- Replacement or refund for products not performing as stated on the datasheet
- Valid for 12 months from date of delivery
- Response to your inquiry within 24 hours

- We provide support in Chinese, English, French, German, Japanese and Spanish
- Extensive multi-media technical resources to help you
- We investigate all quality concerns to ensure our products perform to the highest standards

If the product does not perform as described on this datasheet, we will offer a refund or replacement. For full details of the Abpromise, please visit <https://www.abcam.com/abpromise> or contact our technical team.

Terms and conditions

- Guarantee only valid for products bought direct from Abcam or one of our authorized distributors