

Product datasheet

Recombinant mouse PDE1B protein (Active) ab271672

2 Images

Description

Product name	Recombinant mouse PDE1B protein (Active)	
Biological activity	<p>Specific Activity: 5000 pmol/min/μg.</p> <p>Unit Definition: One unit is defined as the amount of enzyme that will convert 1 pmole of 3', 5'-cAMP to 5'-AMP per min at 37°C.</p>	
Purity	<p>>= 90 % SDS-PAGE.</p> <p>Affinity purified.</p>	
Expression system	Baculovirus infected Sf9 cells	
Accession	Q01065	
Protein length	Protein fragment	
Animal free	No	
Nature	Recombinant	
Species	Mouse	
Sequence	<pre>VKQLENGEV NIEELKKNLE YTASLLEAVY IDETRQILD EDELRELRS D AVPSEVRDWL ASTFTQQTRA KGRRAEEKPK FRSIVHAVQA GIFVERMFRR TYTSVGPTYS TAVHNCLKNL DLWCDFVFSL NRAADDHALR TIVFELLTRH SLISRFKIPT VFLMSFLEAL ETGYGKYKNP YHNQIHAADV TQTVHCFLLR TGMVHCLSEI EVLAIIFAAA IHDIYEHTGTT NSFHIQTKSE CAILYNDRSV LENHHISSVF RMMQDDEMNI FINLTKDEFA ELRALVIEMV LATDMSCHFQ QVKTMKTALQ QLERIDKSKA LSLLLHAADI SHPTKQWSVH SRWTKALMEE FFRQGDKEAE LGLPFSPLCD RTSTLVAQSQ IGFIDFIVEP TFSVLTDVAE KSVQPLADDD SKPKSQPSFQ WRQPSLDVDV GDPNPDVVSF RATWTKYIQE NKQKWKERRA SGITNQMSID ELSPCEEEAP SSPAEDEHNQ NGNLD</pre>	
Predicted molecular weight	83 kDa	
Amino acids	42 to 535	
Tags	GST tag N-Terminus	

Specifications

Our [Abpromise guarantee](#) covers the use of **ab271672** in the following tested applications.

The application notes include recommended starting dilutions; optimal dilutions/concentrations should be determined by the end user.

Applications SDS-PAGE
Functional Studies

Form Liquid

Preparation and Storage

Stability and Storage Shipped on Dry Ice. Store at -80°C. Avoid freeze / thaw cycle.
pH: 8.00
Constituents: 0.63% Tris HCl, 0.64% Sodium chloride, 0.02% Potassium chloride, 0.04% Tween, 20% Glycerol (glycerin, glycerine)
This product is an active protein and may elicit a biological response in vivo, handle with caution.

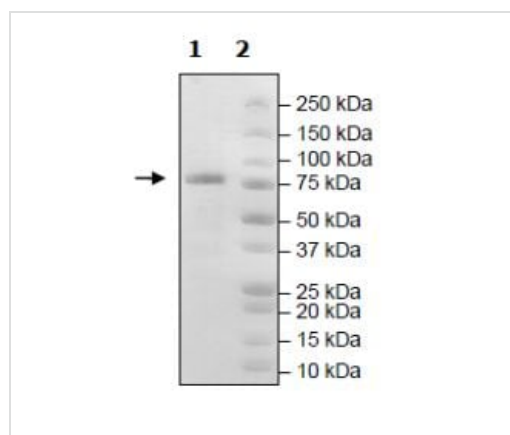
General Info

Function Cyclic nucleotide phosphodiesterase with a dual-specificity for the second messengers cAMP and cGMP, which are key regulators of many important physiological processes. Has a preference for cGMP as a substrate.

Sequence similarities Belongs to the cyclic nucleotide phosphodiesterase family. PDE1 subfamily.

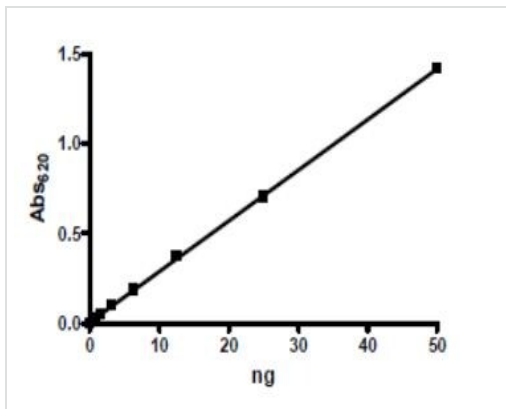
Cellular localization Cytoplasm.

Images



SDS-PAGE analysis of ab271672.

SDS-PAGE - Recombinant mouse PDE1B protein
(Active) (ab271672)



Specific activity of ab271672 was 5000 pmol/min/μg.

Functional Studies - Recombinant mouse PDE1B protein (Active) (ab271672)

Please note: All products are "FOR RESEARCH USE ONLY. NOT FOR USE IN DIAGNOSTIC PROCEDURES"

Our Abpromise to you: Quality guaranteed and expert technical support

- Replacement or refund for products not performing as stated on the datasheet
- Valid for 12 months from date of delivery
- Response to your inquiry within 24 hours
- We provide support in Chinese, English, French, German, Japanese and Spanish
- Extensive multi-media technical resources to help you
- We investigate all quality concerns to ensure our products perform to the highest standards

If the product does not perform as described on this datasheet, we will offer a refund or replacement. For full details of the Abpromise, please visit <https://www.abcam.com/abpromise> or contact our technical team.

Terms and conditions

- Guarantee only valid for products bought direct from Abcam or one of our authorized distributors