

Product datasheet

Recombinant mouse PDE3A protein (Active) ab271678

2 Images

Description

<b>Product name</b>	Recombinant mouse PDE3A protein (Active)
<b>Biological activity</b>	Specific Activity $\geq$ 280 pmol/min/ $\mu$ g. Unit Definition: One unit is defined as the amount of enzyme that will convert 1 pmole of 3', 5'-cAMP to 5'-AMP per min at 37°C.
<b>Purity</b>	$\geq$ 70 % SDS-PAGE. Affinity purified.
<b>Expression system</b>	Baculovirus infected Sf9 cells
<b>Accession</b>	<a href="#">Q9Z0X4</a>
<b>Protein length</b>	Protein fragment
<b>Animal free</b>	No
<b>Nature</b>	Recombinant
<b>Species</b>	Mouse
<b>Predicted molecular weight</b>	100 kDa
<b>Amino acids</b>	484 to 1141
<b>Tags</b>	GST tag N-Terminus

Specifications

Our [Abpromise guarantee](#) covers the use of **ab271678** in the following tested applications.

The application notes include recommended starting dilutions; optimal dilutions/concentrations should be determined by the end user.

<b>Applications</b>	SDS-PAGE Functional Studies
---------------------	--------------------------------

<b>Form</b>	Liquid
-------------	--------

Preparation and Storage

<b>Stability and Storage</b>	Shipped on Dry Ice. Store at -80°C. Avoid freeze / thaw cycle. pH: 8.00 Constituents: 0.63% Tris HCl, 0.64% Sodium chloride, 0.02% Potassium chloride, 0.04% Tween, 20% Glycerol (glycerin, glycerine), 0.55% Glutathione
------------------------------	---

This product is an active protein and may elicit a biological response in vivo, handle with caution.

## General Info

### Function

Cyclic nucleotide phosphodiesterase with a dual-specificity for the second messengers cAMP and cGMP, which are key regulators of many important physiological processes.

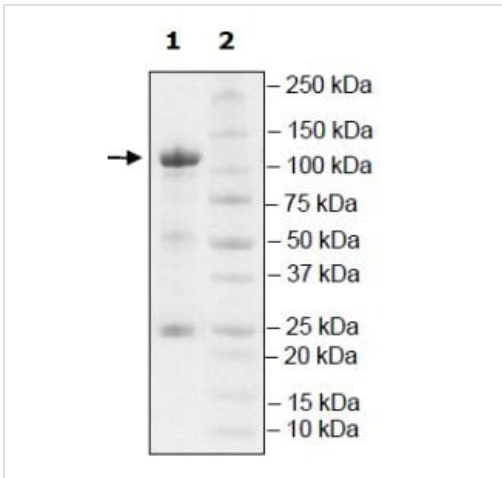
### Sequence similarities

Belongs to the cyclic nucleotide phosphodiesterase family. PDE3 subfamily.

### Cellular localization

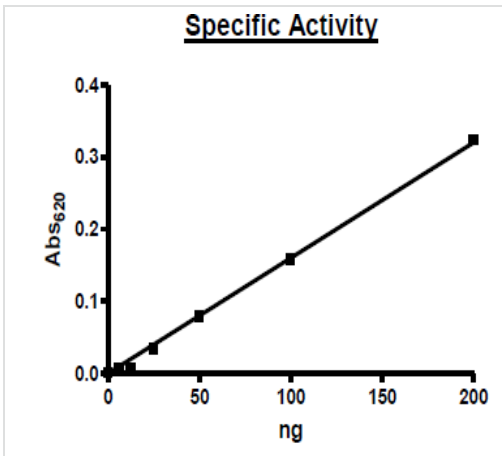
Membrane.

## Images



SDS-PAGE analysis of ab271678.

SDS-PAGE - Recombinant mouse PDE3A protein  
(Active) (ab271678)



Specific activity of ab271678 was  $\geq 280$  pmol/min/ $\mu$ g.

Functional Studies - Recombinant mouse PDE3A  
protein (Active) (ab271678)

**Please note:** All products are "FOR RESEARCH USE ONLY. NOT FOR USE IN DIAGNOSTIC PROCEDURES"

## **Our Abpromise to you: Quality guaranteed and expert technical support**

---

- Replacement or refund for products not performing as stated on the datasheet
- Valid for 12 months from date of delivery
- Response to your inquiry within 24 hours
  
- We provide support in Chinese, English, French, German, Japanese and Spanish
- Extensive multi-media technical resources to help you
- We investigate all quality concerns to ensure our products perform to the highest standards

If the product does not perform as described on this datasheet, we will offer a refund or replacement. For full details of the Abpromise, please visit <https://www.abcam.com/abpromise> or contact our technical team.

## **Terms and conditions**

---

- Guarantee only valid for products bought direct from Abcam or one of our authorized distributors