

Product datasheet

Recombinant mouse Prolactin/PRL protein (Active)
 ab243239

1 Image

Description

Product name	Recombinant mouse Prolactin/PRL protein (Active)	
Biological activity	Fully biologically active when compared to standard. The ED50 as determined by its ability to induce cAMP accumulation in murine MC3T3E1 cells is less than 50 ng/ml, corresponding to a specific activity of > 2.0 × 10 ⁴ IU/mg.	
Purity	> 98 % SDS-PAGE. >98% as determined by SDS-PAGE and HPLC.	
Endotoxin level	< 1.000 Eu/μg	
Expression system	Escherichia coli	
Accession	P06879	
Protein length	Full length protein	
Animal free	No	
Nature	Recombinant	
Species	Mouse	
Sequence	LPICSAGDCQTSRLRELFDRVVILSHYIHTLYTDMFIEFDKQY VQDREFMV KVINDCPTSSLATPEDKEQALKVPPEVLLNLILSLVQSSSD PLFQLITGV GGQEAPEYILSRAKEIEEQNKQLLEGVEKIISQAYPEAKGN GYFVWSQ LPSLQGVDEESKILSLRNTIRCLRRDSHKVDNFKVLRCQI AHQNNC	
Predicted molecular weight	22 kDa	
Amino acids	30 to 226	
Additional sequence information	Full-length mature chain lacking the signal peptide.	

Specifications

Our [Abpromise guarantee](#) covers the use of **ab243239** in the following tested applications.

The application notes include recommended starting dilutions; optimal dilutions/concentrations should be determined by the end user.

Applications HPLC

SDS-PAGE
Functional Studies

Form Lyophilized

Preparation and Storage

Stability and Storage Shipped at 4°C. Store at -20°C or -80°C. Avoid freeze / thaw cycle.

Constituent: PBS

0.2 µm filtered

This product is an active protein and may elicit a biological response in vivo, handle with caution.

Reconstitution

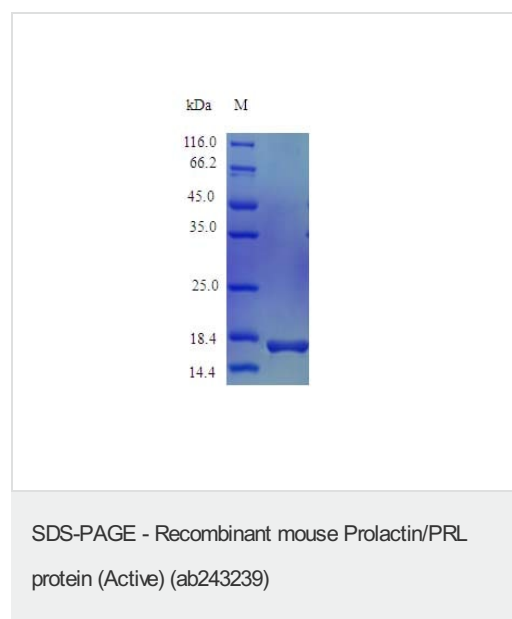
Briefly centrifuge prior to opening to bring the contents to the bottom. Reconstitute in sterile distilled water or aqueous buffer containing 0.1 % BSA to a concentration of 0.1-1.0 mg/mL. Stock solutions should be apportioned into working aliquots and stored at -20 °C or below. Further dilutions should be made in appropriate buffered solutions.

General Info

Relevance Various hormones are secreted from the anterior pituitary during development and growth. Prolactin is a growth factor secreted by the anterior pituitary that is necessary for the proliferation and differentiation of the mammary glands.

Cellular localization Secreted

Images



SDS Page analysis of ab243239

Please note: All products are "FOR RESEARCH USE ONLY. NOT FOR USE IN DIAGNOSTIC PROCEDURES"

Our Abpromise to you: Quality guaranteed and expert technical support

- Replacement or refund for products not performing as stated on the datasheet
- Valid for 12 months from date of delivery
- Response to your inquiry within 24 hours

- We provide support in Chinese, English, French, German, Japanese and Spanish
- Extensive multi-media technical resources to help you
- We investigate all quality concerns to ensure our products perform to the highest standards

If the product does not perform as described on this datasheet, we will offer a refund or replacement. For full details of the Abpromise, please visit <https://www.abcam.com/abpromise> or contact our technical team.

Terms and conditions

- Guarantee only valid for products bought direct from Abcam or one of our authorized distributors