

Product datasheet

Recombinant Mouse Telomerase reverse transcriptase protein (Tagged) ab226420

1 Image

Description

Product name	Recombinant Mouse Telomerase reverse transcriptase protein (Tagged)	
Purity	> 90 % SDS-PAGE.	
Expression system	Escherichia coli	
Accession	O70372	
Protein length	Protein fragment	
Animal free	No	
Nature	Recombinant	
Species	Mouse	
Sequence	EVRHHQDTWLAMPICRLRFIPKPNGLRPVNMSSYSMGT LGRKQAQHF TQRLKTLFSMLNYERTKHPHLMGSSVLGMNDIYRTWRAFV LRVRALDQTP RMYFVKADVTGAYDAIPQGKLVVVANMIRHSESTYCIQY AVVRRDSQG QVHKSFRQVTTLSDLQPYMGQFLKHLQSDASALRNSV VIEQSISMNES SSSLFDFFLHFLRHSVVKIGDRCYTQCQGIPQGSSLSTLLC SLCFGDMEN KLFAEVQRDGLLLRFVDDFLLVTPHLDQAKTFLSTLVHGV PEYGCMINLQ KTVVNFVPEPGTLGGAAPYQLPAHCLFPWCGLLL	
Predicted molecular weight	54 kDa including tags	
Amino acids	595 to 928	
Tags	His tag N-Terminus	
Additional sequence information	Reverse transcriptase domain with 6xHis-SUMO tag at the N-terminus.	

Specifications

Our [Abpromise guarantee](#) covers the use of **ab226420** in the following tested applications.

The application notes include recommended starting dilutions; optimal dilutions/concentrations should be determined by the end user.

Applications SDS-PAGE

Form Liquid

Preparation and Storage

Stability and Storage Shipped at 4°C. Store at +4°C short term (1-2 weeks). Upon delivery aliquot. Store at -20°C or -80°C. Avoid freeze / thaw cycle.

pH: 7.2

Constituents: 50% Glycerol (glycerin, glycerine), Tris buffer

General Info

Function Telomerase is a ribonucleoprotein enzyme essential for the replication of chromosome termini in most eukaryotes. Active in progenitor and cancer cells. Inactive, or very low activity, in normal somatic cells. Catalytic component of the telomerase holoenzyme complex whose main activity is the elongation of telomeres by acting as a reverse transcriptase that adds simple sequence repeats to chromosome ends by copying a template sequence within the RNA component of the enzyme. Catalyzes the RNA-dependent extension of 3'-chromosomal termini with the 6-nucleotide telomeric repeat unit, 5'-TTAGGG-3'. The catalytic cycle involves primer binding, primer extension and release of product once the template boundary has been reached or nascent product translocation followed by further extension. More active on substrates containing 2 or 3 telomeric repeats. Telomerase activity is regulated by a number of factors including telomerase complex-associated proteins, chaperones and polypeptide modifiers. Modulates Wnt signaling. Plays important roles in aging and antiapoptosis.

Tissue specificity Expressed at a high level in thymocyte subpopulations, at an intermediate level in tonsil T lymphocytes, and at a low to undetectable level in peripheral blood T lymphocytes.

Involvement in disease Note=Activation of telomerase has been implicated in cell immortalization and cancer cell pathogenesis.
Defects in TERT are associated with susceptibility to aplastic anemia (AA) [MIM:609135]. AA is a rare disease in which the reduction of the circulating blood cells results from damage to the stem cell pool in bone marrow. In most patients, the stem cell lesion is caused by an autoimmune attack. T-lymphocytes, activated by an endogenous or exogenous, and most often unknown antigenic stimulus, secrete cytokines, including IFN-gamma, which would in turn be able to suppress hematopoiesis.
Note=Genetic variations in TERT are associated with coronary artery disease (CAD).
Defects in TERT are a cause of dyskeratosis congenita autosomal dominant (ADDKC) [MIM:127550]; also known as dyskeratosis congenita Scoggins type. ADDKC is a rare, progressive bone marrow failure syndrome characterized by the triad of reticulated skin hyperpigmentation, nail dystrophy, and mucosal leukoplakia. Early mortality is often associated with bone marrow failure, infections, fatal pulmonary complications, or malignancy.
Defects in TERT are a cause of susceptibility to pulmonary fibrosis idiopathic (IPF) [MIM:178500]. Pulmonary fibrosis is a lung disease characterized by shortness of breath, radiographically evident diffuse pulmonary infiltrates, and varying degrees of inflammation and fibrosis on biopsy. It results in acute lung injury with subsequent scarring and endstage lung disease.

Sequence similarities Belongs to the reverse transcriptase family. Telomerase subfamily.
Contains 1 reverse transcriptase domain.

Domain The primer grip sequence in the RT domain is required for telomerase activity and for stable association with short telomeric primers.

The RNA-interacting domain 1 (RD1)/N-terminal extension (NTE) is required for interaction with the pseudoknot-template domain of each of TERC dimers. It contains anchor sites that bind primer nucleotides upstream of the RNA-DNA hybrid and is thus an essential determinant of repeat addition processivity.

The RNA-interacting domain 2 (RD2) is essential for both interaction with the CR4-CR5 domain of TERC and for DNA synthesis.

Post-translational modifications

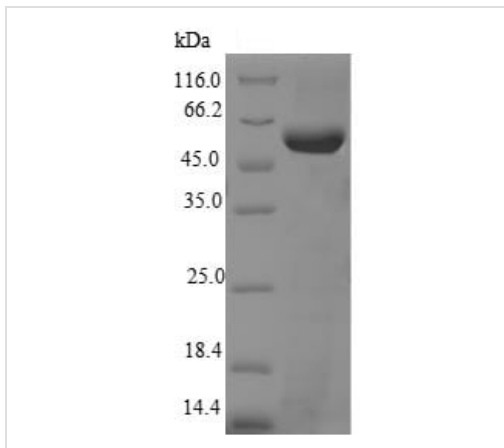
Ubiquitinated, leading to proteasomal degradation.

Phosphorylation at Tyr-707 under oxidative stress leads to translocation of TERT to the cytoplasm and reduces its antiapoptotic activity. Dephosphorylated by SHP2/PTPN11 leading to nuclear retention. Phosphorylation by the AKT pathway promotes nuclear location.

Cellular localization

Nucleus > nucleolus. Nucleus > nucleoplasm. Nucleus. Chromosome > telomere. Cytoplasm. Nucleus > PML body. Shuttling between nuclear and cytoplasm depends on cell cycle, phosphorylation states, transformation and DNA damage. Diffuse localization in the nucleoplasm. Enriched in nucleoli of certain cell types. Translocated to the cytoplasm via nuclear pores in a CRM1/RAN-dependent manner involving oxidative stress-mediated phosphorylation at Tyr-707. Dephosphorylation at this site by SHP2 retains TERT in the nucleus. Translocated to the nucleus by phosphorylation by AKT.

Images



(Tris-Glycine gel) Discontinuous SDS-PAGE (reduced) analysis of ab226420 with 5% enrichment gel and 15% separation gel.

SDS-PAGE - Recombinant Mouse Telomerase reverse transcriptase protein (Tagged) (ab226420)

Please note: All products are "FOR RESEARCH USE ONLY. NOT FOR USE IN DIAGNOSTIC PROCEDURES"

Our Abpromise to you: Quality guaranteed and expert technical support

- Replacement or refund for products not performing as stated on the datasheet
- Valid for 12 months from date of delivery
- Response to your inquiry within 24 hours
- We provide support in Chinese, English, French, German, Japanese and Spanish
- Extensive multi-media technical resources to help you
- We investigate all quality concerns to ensure our products perform to the highest standards

If the product does not perform as described on this datasheet, we will offer a refund or replacement. For full details of the Abpromise, please visit <https://www.abcam.com/abpromise> or contact our technical team.

Terms and conditions

- Guarantee only valid for products bought direct from Abcam or one of our authorized distributors