

Product datasheet

Recombinant Mycobacterium tuberculosis Hypoxic response protein 1 (Tagged) ab238290

3 Images

Description

Product name	Recombinant Mycobacterium tuberculosis Hypoxic response protein 1 (Tagged)	
Purity	> 90 % SDS-PAGE.	
Expression system	Escherichia coli	
Accession	P9WJA3	
Protein length	Full length protein	
Animal free	No	
Nature	Recombinant	
Species	Mycobacterium tuberculosis	
Sequence	MTTARDIMNAGVTCVGEHETLTAAAQYMREHDIGALPICG DDDRLHGMLT DRDIVKGLAAGLDPNTATAGELARDSIYYVDANASIQEMLN VMEEHQVR RVPVISEHRLVGMTEADIARHLPEHAMQFVKAICSPMALA S	
Predicted molecular weight	36 kDa including tags	
Amino acids	1 to 143	
Additional sequence information	N-terminal 10xHis-SUMO-tagged and C-terminal Myc-tagged. (Strain ATCC 25618 / H37Rv).	

Specifications

Our [Abpromise guarantee](#) covers the use of **ab238290** in the following tested applications.

The application notes include recommended starting dilutions; optimal dilutions/concentrations should be determined by the end user.

Applications	Mass Spectrometry
	SDS-PAGE
Form	Liquid

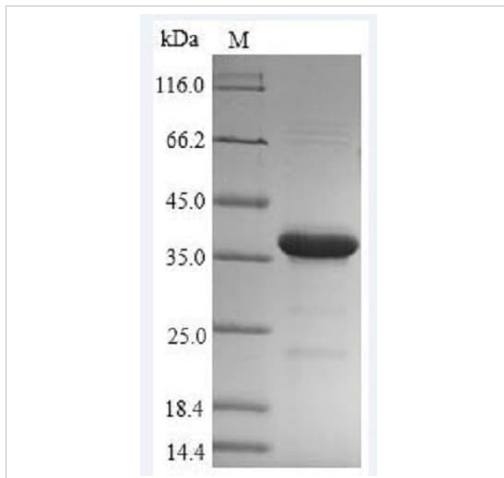
Preparation and Storage

Stability and Storage

Shipped at 4°C. Store at -20°C or -80°C. Avoid freeze / thaw cycle.

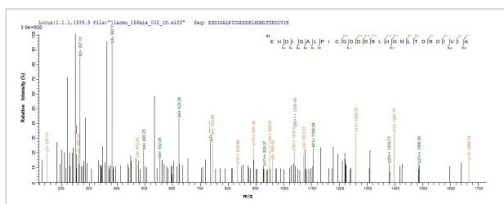
Constituents: Tris buffer, 50% Glycerol (glycerin, glycerine)

Images



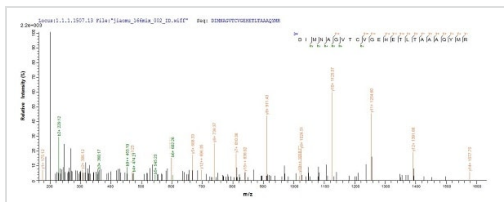
SDS-PAGE - Recombinant Mycobacterium tuberculosis Hypoxic response protein 1 (Tagged) (ab238290)

(Tris-Glycine gel) Discontinuous SDS-PAGE (reduced) with 5% enrichment gel and 15% separation gel analysis of ab238290.



Mass Spectrometry - Recombinant Mycobacterium tuberculosis Hypoxic response protein 1 (Tagged) (ab238290)

Based on the SEQUEST from database of E.coli host and target protein, the LC-MS/MS Analysis result of ab238290 could indicate that this peptide derived from E.coli-expressed Mycobacterium tuberculosis (strain ATCC 25618 / H37Rv) Hypoxic response protein 1.



Mass Spectrometry - Recombinant Mycobacterium tuberculosis Hypoxic response protein 1 (Tagged) (ab238290)

Based on the SEQUEST from database of E.coli host and target protein, the LC-MS/MS Analysis result of ab238290 could indicate that this peptide derived from E.coli-expressed Mycobacterium tuberculosis (strain ATCC 25618 / H37Rv) Hypoxic response protein 1.

Please note: All products are "FOR RESEARCH USE ONLY. NOT FOR USE IN DIAGNOSTIC PROCEDURES"

Our Abpromise to you: Quality guaranteed and expert technical support

- Replacement or refund for products not performing as stated on the datasheet
- Valid for 12 months from date of delivery
- Response to your inquiry within 24 hours

- We provide support in Chinese, English, French, German, Japanese and Spanish
- Extensive multi-media technical resources to help you
- We investigate all quality concerns to ensure our products perform to the highest standards

If the product does not perform as described on this datasheet, we will offer a refund or replacement. For full details of the Abpromise, please visit <https://www.abcam.com/abpromise> or contact our technical team.

Terms and conditions

- Guarantee only valid for products bought direct from Abcam or one of our authorized distributors