

Product datasheet

Recombinant Mycobacterium tuberculosis MPT51/MPB51 antigen protein (Tagged) ab237747

3 Images

Description

<b>Product name</b>	Recombinant Mycobacterium tuberculosis MPT51/MPB51 antigen protein (Tagged)	
<b>Purity</b>	> 90 % SDS-PAGE.	
<b>Expression system</b>	Escherichia coli	
<b>Accession</b>	<a href="#">P9WQN6</a>	
<b>Protein length</b>	Full length protein	
<b>Animal free</b>	No	
<b>Nature</b>	Recombinant	
<b>Species</b>	Mycobacterium tuberculosis	
<b>Sequence</b>	AEPTAKAAPYENLMVPSMGRDIPVAFLAGGPHAVYLL DAFNAGPDVSN WVTAGNAMNTLAGKGISVVAPAGGAYSMYTNWEQDGSK QWDTFLSAELPD WLAANRGLAPGGHAAVCAAQGGYGAMALAAFHPDRFGF AGSMGFLYPSN TTTNGAIAAGMQQFGGVDTNGMWGAPQLGRWKWHDPW VHASLLAQNNTRV WWSPTNPGASDPAAMIGQAAEAMGNSRMFYNQYRSVG GHNGHFDFPASG DNGWGSWAPQLGAMSGDMGAIR	
<b>Predicted molecular weight</b>	45 kDa including tags	
<b>Amino acids</b>	27 to 299	
<b>Tags</b>	His tag N-Terminus	
<b>Additional sequence information</b>	This product is the mature full length protein from aa 27 to 299. The signal peptide is not included. N-terminal 6xHis-SUMO-tag.	

Specifications

Our [Abpromise guarantee](#) covers the use of **ab237747** in the following tested applications.

The application notes include recommended starting dilutions; optimal dilutions/concentrations should be determined by the end user.

**Applications** Mass Spectrometry

SDS-PAGE

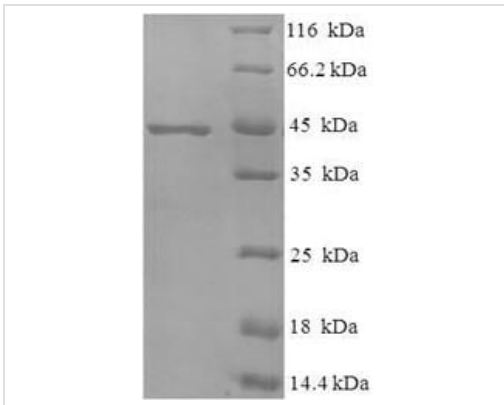
Form Liquid

### Preparation and Storage

**Stability and Storage** Shipped at 4°C. Store at -20°C or -80°C. Avoid freeze / thaw cycle.  
Constituents: Tris buffer, 50% Glycerol (glycerin, glycerine)

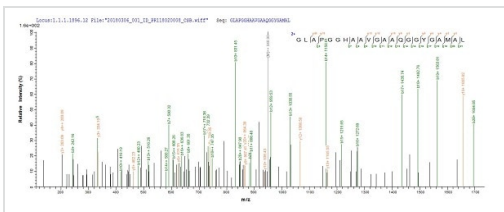
### General Info

### Images



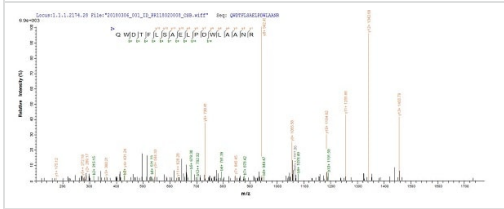
SDS-PAGE - Recombinant Mycobacterium tuberculosis MPT51/MPB51 antigen protein (Tagged) (ab237747)

(Tris-Glycine gel) Discontinuous SDS-PAGE (reduced) analysis with 5% enrichment gel and 15% separation gel of ab237747.



Mass Spectrometry - Recombinant Mycobacterium tuberculosis MPT51/MPB51 antigen protein (Tagged) (ab237747)

Based on the SEQUEST from database of E.coli host and target protein, the LC-MS/MS Analysis result of ab237747 could indicate that this peptide derived from E.coli-expressed Mycobacterium tuberculosis MPT51/MPB51 antigen.



SDS-PAGE - Recombinant Mycobacterium tuberculosis MPT51/MPB51 antigen protein (Tagged) (ab237747)

Based on the SEQUEST from database of E.coli host and target protein, the LC-MS/MS Analysis result of ab237747 could indicate that this peptide derived from E.coli-expressed Mycobacterium tuberculosis MPT51/MPB51 antigen.

**Please note:** All products are "FOR RESEARCH USE ONLY. NOT FOR USE IN DIAGNOSTIC PROCEDURES"

### Our Abpromise to you: Quality guaranteed and expert technical support

---

- Replacement or refund for products not performing as stated on the datasheet
- Valid for 12 months from date of delivery
- Response to your inquiry within 24 hours
- We provide support in Chinese, English, French, German, Japanese and Spanish
- Extensive multi-media technical resources to help you
- We investigate all quality concerns to ensure our products perform to the highest standards

If the product does not perform as described on this datasheet, we will offer a refund or replacement. For full details of the Abpromise, please visit <https://www.abcam.com/abpromise> or contact our technical team.

### Terms and conditions

---

- Guarantee only valid for products bought direct from Abcam or one of our authorized distributors