

Product datasheet

Recombinant Pectate lyase 1 protein (Tagged)
ab239542

3 Images

Description

Product name	Recombinant Pectate lyase 1 protein (Tagged)	
Purity	> 90 % SDS-PAGE.	
Expression system	Escherichia coli	
Accession	Q9SCG9	
Protein length	Full length protein	
Animal free	No	
Nature	Recombinant	
Sequence	DNPIDSCWRGDSNWDQNRMKLADCVVGFSGSSTMGGKG GEYTVTSSDNP VNPTPGTLRYGATREKALWIIFSQNMNIKLMPLYVAGYKTI DGRGADVH LGNGGPCLFMRKASHVILHGLHHGCNTSVLGDVLVSESIG VEPVHAQDG DAITMRNVTNAWIDHNSLSDCSDGLIDVTLGSTGITISNNHF FNHHKVML LGHDDTYDDDKSMKVTVAFNQFGPNAGQRMPRARYGLV HVANNNYDQWNI YAIGSSNPILSEGNSFTAPNESYKKEVTKRIGCETTSAC ANWVWRSTR DAFTNGAYFVSSGKAEDTNINYSNEAFKVENGNAAPQLTQ NAGVVA	
Predicted molecular weight	43 kDa including tags	
Amino acids	22 to 367	
Tags	His tag N-Terminus	
Additional sequence information	Hesperocyparis arizonica (Arizona cypress) (Cupressus arizonica). This product is the mature full length protein. The signal peptide is not included. N-terminal 10xHis-tag and C-terminal Myc-tag.	

Specifications

Our [Abpromise guarantee](#) covers the use of **ab239542** in the following tested applications.

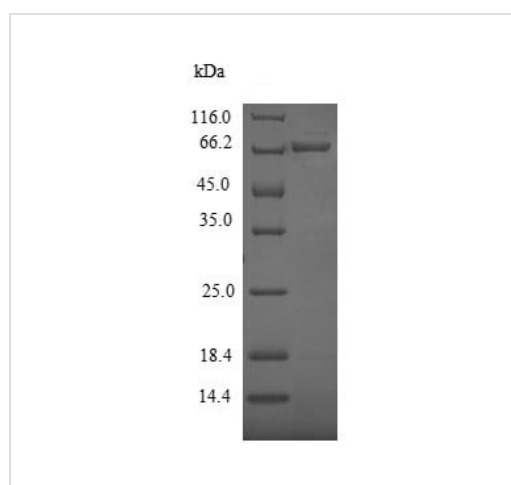
The application notes include recommended starting dilutions; optimal dilutions/concentrations should be determined by the end user.

Applications	Mass Spectrometry SDS-PAGE
Mass spectrometry	LC-MS/MS
Form	Liquid

Preparation and Storage

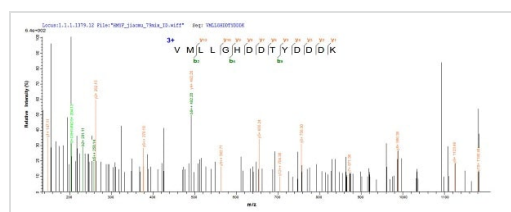
Stability and Storage Shipped at 4°C. Store at -20°C or -80°C. Avoid freeze / thaw cycle.
Constituents: Tris buffer, 50% Glycerol (glycerin, glycerine)

Images



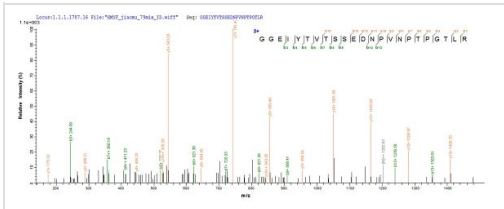
SDS-PAGE - Recombinant Pectate lyase 1 protein (Tagged) (ab239542)

(Tris-Glycine gel) Discontinuous SDS-PAGE (reduced) analysis with 5% enrichment gel and 15% separation gel of ab239542.



Mass Spectrometry - Recombinant Pectate lyase 1 protein (Tagged) (ab239542)

Based on the SEQUEST from database of E.coli host and target protein, the LC-MS/MS Analysis result of ab239542 could indicate that this peptide derived from E.coli-expressed Cupressus arizonica (Arizona cypress) (*Callitropsis arizonica*) Pectate lyase 1.



Mass Spectrometry - Recombinant Pectate lyase 1 protein (Tagged) (ab239542)

Based on the SEQUEST from database of E.coli host and target protein, the LC-MS/MS Analysis result of ab239542 could indicate that this peptide derived from E.coli-expressed Cupressus arizonica (Arizona cypress) (*Callitropsis arizonica*) Pectate lyase 1.

Please note: All products are "FOR RESEARCH USE ONLY. NOT FOR USE IN DIAGNOSTIC PROCEDURES"

Our Abpromise to you: Quality guaranteed and expert technical support

- Replacement or refund for products not performing as stated on the datasheet
- Valid for 12 months from date of delivery
- Response to your inquiry within 24 hours
- We provide support in Chinese, English, French, German, Japanese and Spanish
- Extensive multi-media technical resources to help you
- We investigate all quality concerns to ensure our products perform to the highest standards

If the product does not perform as described on this datasheet, we will offer a refund or replacement. For full details of the Abpromise, please visit <https://www.abcam.com/abpromise> or contact our technical team.

Terms and conditions

- Guarantee only valid for products bought direct from Abcam or one of our authorized distributors