

Product datasheet

Recombinant Rabbit Calreticulin protein ab15729

3 References 1 Image

Description

Product name	Recombinant Rabbit Calreticulin protein
Expression system	Escherichia coli
Accession	P15253
Protein length	Full length protein
Animal free	No
Nature	Recombinant
Species	Rabbit
Sequence	<pre> MLLPVPLLLGLLGLAAAEPVVYFKEQFLDGDGWTERWIES KHKSDFGKFV LSSGKFYGDQEKKGLQTSQDARFYALSARFEPFSNKGQ PLVVQFTVKHE QNIDCGGGYVKLFPAGLDQKDMHGDSEYNIMFGPDICGP GTKKVHVIFNY KGKNVLINKDIRCKDDEFTHLYTLVLRPDNTYEVKIDNSQVE SGSLEDDW DFLPPKKIKDPDASKPEDWDERAKIDDPTDSKPEDWDK PEHIPDPAKKP EDWDEEMDGEWEPPVIQNPEYKGEWKPRQIDNPYKGT WIHPEIDNPEYS PDANIYYSFAVLGLDLWQVKSGTIFDNFLITNDEAYAE FGNETWGV KTAEQMKDKQDEEQRLKEEEEEKKRKEEEEEAEDEED KDDKEDEDEE DKDEEEEEAAAGQAKDEL </pre>
Predicted molecular weight	60 kDa
Amino acids	1 to 418
Additional sequence information	Molecular weight based on amino acid composition. The protein migrates as ~60 KdA protein in the SDS-PAGE due to reduced SDS binding (highly acidic C-terminus).

Specifications

Our [Abpromise guarantee](#) covers the use of **ab15729** in the following tested applications.

The application notes include recommended starting dilutions; optimal dilutions/concentrations should be determined by the end user.

Applications Western blot

Form	ELISA
Additional notes	Purified full length rabbit Calreticulin protein. SwissProt ID P15253.

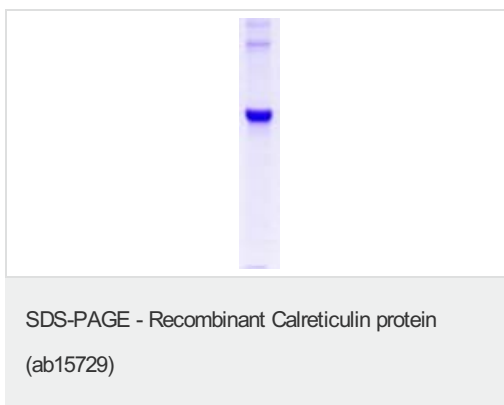
Preparation and Storage

Stability and Storage	Shipped at 4°C. Upon delivery aliquot and store at -20°C or -80°C. Avoid repeated freeze / thaw cycles. Constituent: PBS
------------------------------	---

General Info

Function	Molecular calcium-binding chaperone promoting folding, oligomeric assembly and quality control in the ER via the calreticulin/calnexin cycle. This lectin interacts transiently with almost all of the monoglucosylated glycoproteins that are synthesized in the ER. Interacts with the DNA-binding domain of NR3C1 and mediates its nuclear export.
Sequence similarities	Belongs to the calreticulin family.
Domain	Can be divided into a N-terminal globular domain, a proline-rich P-domain forming an elongated arm-like structure and a C-terminal acidic domain. The P-domain binds one molecule of calcium with high affinity, whereas the acidic C-domain binds multiple calcium ions with low affinity. The interaction with glycans occurs through a binding site in the globular lectin domain. The zinc binding sites are localized to the N-domain. Associates with PDIA3 through the tip of the extended arm formed by the P-domain.
Cellular localization	Endoplasmic reticulum lumen. Cytoplasm > cytosol. Secreted > extracellular space > extracellular matrix. Cell surface. Also found in cell surface (T cells), cytosol and extracellular matrix. Associated with the lytic granules in the cytolytic T-lymphocytes.

Images



Coomassie stain of SDS-PAGE gel with ab15729.

Please note: All products are "FOR RESEARCH USE ONLY. NOT FOR USE IN DIAGNOSTIC PROCEDURES"

Our Abpromise to you: Quality guaranteed and expert technical support

- Replacement or refund for products not performing as stated on the datasheet
- Valid for 12 months from date of delivery
- Response to your inquiry within 24 hours

- We provide support in Chinese, English, French, German, Japanese and Spanish
- Extensive multi-media technical resources to help you
- We investigate all quality concerns to ensure our products perform to the highest standards

If the product does not perform as described on this datasheet, we will offer a refund or replacement. For full details of the Abpromise, please visit <https://www.abcam.com/abpromise> or contact our technical team.

Terms and conditions

- Guarantee only valid for products bought direct from Abcam or one of our authorized distributors