

Product datasheet

Recombinant Rat Alanine Transaminase protein ab207123

1 Image

Description

Product name	Recombinant Rat Alanine Transaminase protein
Purity	> 90 % SDS-PAGE. ab207123 was purified using conventional chromatography techniques.
Expression system	Escherichia coli
Accession	P25409
Protein length	Full length protein
Animal free	No
Nature	Recombinant
Species	Rat
Sequence	<pre> MGSSHHHHHH SSGLVPRGSH MGSMASRVND QQASRNLK GKVLTLDTMN PCVRRVEYAV RGPVQRALE LEQELRQGVK KPFTEVIRAN IGDAQAMGQR PITFFRQVLA LCVYPNLLSS PDFPEDAKRR AERILQACGG HSLGAYSISS GIQPIREDVA QYIERRDGGI PADPNNIFLS TGASDAITM LKLLVSGEGR ARTGVLIP QYPLSAALA ELDAVQVDYY LDEERAWALD IAELRRALCQ ARDRCCPRVL CVINPGNPTG QQQTRECIEA VIRFAFKEGL FLMADEVYQD NVYAEGSQFH SFKKVLMEMG PPYSTQQELA SFHSVSKGYM GECGFRGGYV EVVNMDAEVQ KQMGKLM SVR LCPPVPGQAL MDMVVSPTP SEPSFKQFQA ERQEVLAELA AKAKLTEQVF NEAPGIRCNP VQGAMYSFPQ VQLPLKAVQR AQELGLAPDM FFCLCLEET GICVVPGSGF GQQEGTYHFR MTILPPMEKL RLLLEKLSHF HAKFTHEYS </pre>
Predicted molecular weight	58 kDa including tags
Amino acids	1 to 496
Tags	His tag N-Terminus
Additional sequence information	NP_112301

Specifications

Our [Abpromise guarantee](#) covers the use of **ab207123** in the following tested applications.

The application notes include recommended starting dilutions; optimal dilutions/concentrations should be determined by the end user.

Applications SDS-PAGE

Form Liquid

Preparation and Storage

Stability and Storage Shipped at 4°C. Store at +4°C short term (1-2 weeks). Upon delivery aliquot. Store at -20°C or -80°C. Avoid freeze / thaw cycle.

pH: 7.40

Constituents: 10% Glycerol, 89% PBS

General Info

Function Catalyzes the reversible transamination between alanine and 2-oxoglutarate to form pyruvate and glutamate. Participates in cellular nitrogen metabolism and also in liver gluconeogenesis starting with precursors transported from skeletal muscles.

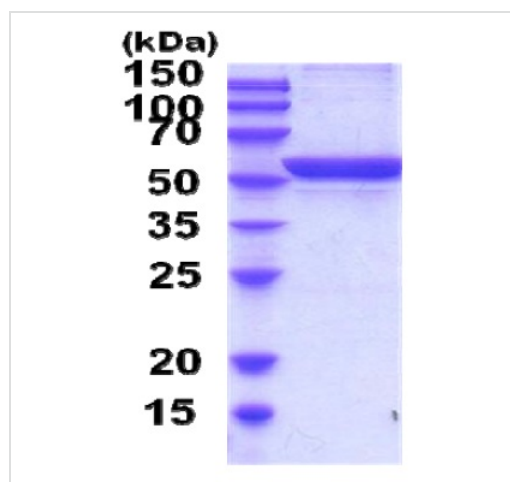
Tissue specificity Liver, kidney, heart, and skeletal muscles. Expressed at moderate levels in the adipose tissue.

Pathway Amino-acid degradation; L-alanine degradation via transaminase pathway; pyruvate from L-alanine: step 1/1.

Sequence similarities Belongs to the class-I pyridoxal-phosphate-dependent aminotransferase family. Alanine aminotransferase subfamily.

Cellular localization Cytoplasm.

Images



15% SDS-PAGE analysis of ab207123 (3 µg)

SDS-PAGE - Recombinant Rat Alanine
Transaminase protein (ab207123)

Please note: All products are "FOR RESEARCH USE ONLY. NOT FOR USE IN DIAGNOSTIC PROCEDURES"

Our Abpromise to you: Quality guaranteed and expert technical support

- Replacement or refund for products not performing as stated on the datasheet
- Valid for 12 months from date of delivery
- Response to your inquiry within 24 hours

- We provide support in Chinese, English, French, German, Japanese and Spanish
- Extensive multi-media technical resources to help you
- We investigate all quality concerns to ensure our products perform to the highest standards

If the product does not perform as described on this datasheet, we will offer a refund or replacement. For full details of the Abpromise, please visit <https://www.abcam.com/abpromise> or contact our technical team.

Terms and conditions

- Guarantee only valid for products bought direct from Abcam or one of our authorized distributors