

Product datasheet

Recombinant Rat Cathepsin K protein (His tag)  
 ab235712

1 Image

Description

<b>Product name</b>	Recombinant Rat Cathepsin K protein (His tag)	
<b>Purity</b>	> 90 % SDS-PAGE.	
<b>Expression system</b>	Escherichia coli	
<b>Accession</b>	<a href="#">O35186</a>	
<b>Protein length</b>	Full length protein	
<b>Animal free</b>	No	
<b>Nature</b>	Recombinant	
<b>Species</b>	Rat	
<b>Sequence</b>	VPDSIDYRKKGYVTPVKNQGQCGSCWAFSSAGALEGQL KKKTGKLLALSP QNLVDCVSENYGCGGGYMTTAFQYVQQNGGIDSEDAYPY VGQDESCMYNA TAKAAKCRGYREIPVGNEKALKRAVARVGPVSVSIDASLT SFQFYSRGVY YDENCDRDNVNHAVLVVGYGTQKGNKYWIKNWSGESWG NKGVLLARNK NNACGITNLASFPM	
<b>Predicted molecular weight</b>	28 kDa including tags	
<b>Amino acids</b>	115 to 329	
<b>Tags</b>	His tag N-Terminus	
<b>Additional sequence information</b>	N-terminal 6xHis-tagged. Full length mature chain without signal peptide and without propeptide.	

Specifications

Our [Abpromise guarantee](#) covers the use of **ab235712** in the following tested applications.

The application notes include recommended starting dilutions; optimal dilutions/concentrations should be determined by the end user.

**Applications** SDS-PAGE

**Form** Liquid

Preparation and Storage

## Preparation and Storage

### Stability and Storage

Shipped at 4°C. Store at -20°C or -80°C. Avoid freeze / thaw cycle.

Constituents: Tris buffer, 50% Glycerol (glycerin, glycerine)

## General Info

### Function

Closely involved in osteoclastic bone resorption and may participate partially in the disorder of bone remodeling. Displays potent endoprotease activity against fibrinogen at acid pH. May play an important role in extracellular matrix degradation.

### Tissue specificity

Predominantly expressed in osteoclasts (bones).

### Involvement in disease

Defects in CTSK are the cause of pycnodysostosis (PKND) [MIM:265800]. PKND is an autosomal recessive osteochondrodysplasia characterized by osteosclerosis and short stature.

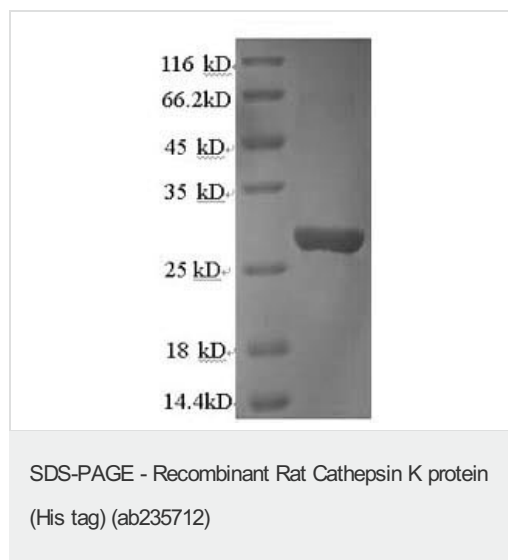
### Sequence similarities

Belongs to the peptidase C1 family.

### Cellular localization

Lysosome.

## Images



(Tris-glycine gel) Discontinuous SDS-PAGE (reduced) with 5% enrichment gel and 15% separation gel of ab235712.

**Please note:** All products are "FOR RESEARCH USE ONLY. NOT FOR USE IN DIAGNOSTIC PROCEDURES"

## Our Abpromise to you: Quality guaranteed and expert technical support

- Replacement or refund for products not performing as stated on the datasheet
- Valid for 12 months from date of delivery
- Response to your inquiry within 24 hours
- We provide support in Chinese, English, French, German, Japanese and Spanish
- Extensive multi-media technical resources to help you
- We investigate all quality concerns to ensure our products perform to the highest standards

If the product does not perform as described on this datasheet, we will offer a refund or replacement. For full details of the Abpromise,

please visit <https://www.abcam.com/abpromise> or contact our technical team.

## **Terms and conditions**

---

- Guarantee only valid for products bought direct from Abcam or one of our authorized distributors