

## Product datasheet

# Recombinant Rat CCL2/JE/MCP-1 Protein ab283927

1 Image

### Description

---

<b>Product name</b>	Recombinant Rat CCL2/JE/MCP-1 Protein
<b>Purity</b>	>= 95 % Purified via His tag.
<b>Expression system</b>	HEK 293 cells
<b>Accession</b>	<b><u>P14844</u></b>
<b>Protein length</b>	Full length protein
<b>Animal free</b>	Yes
<b>Carrier free</b>	Yes
<b>Nature</b>	Recombinant
<b>Species</b>	Rat
<b>Sequence</b>	QPDAVNAPLT CCYSFTGKMI PMSRLENYKR ITSSRCPKEA VVFVTKLKRE ICADPNKEWV QKYIRKLDQN QVRSETTVFY KIASLRTSA PLNVNLTHKS EANASTLFST TTSSTSVEVT SMTEN
<b>Predicted molecular weight</b>	14 kDa
<b>Amino acids</b>	24 to 148
<b>Additional sequence information</b>	N-terminal Glycine.
<b>Description</b>	Recombinant Rat MCP1 protein

### Specifications

---

Our **Abpromise guarantee** covers the use of **ab283927** in the following tested applications.

The application notes include recommended starting dilutions; optimal dilutions/concentrations should be determined by the end user.

<b>Applications</b>	SDS-PAGE
<b>Form</b>	Lyophilized

### Preparation and Storage

---

<b>Stability and Storage</b>	Shipped at Room Temperature. Store at Room Temperature. pH: 7.40
------------------------------	---

Constituents: 0.727% Dibasic monohydrogen potassium phosphate, 0.248% Monobasic dihydrogen potassium phosphate, 10.26% Trehalose

## Reconstitution

Store lyophilized form at room temperature. Reconstitute, aliquot and store at -80°C for 12 months or +4°C for 1 week. Avoid repeated freeze-thaw. Lyophilized contents may appear as either a translucent film or a white powder. This variance does not affect the quality of the product. Lyophilized contents may appear as either a translucent film or a white powder. This variance does not affect the quality of the product.

## General Info

---

### Function

Chemotactic factor that attracts monocytes and basophils but not neutrophils or eosinophils. Augments monocyte anti-tumor activity. Has been implicated in the pathogenesis of diseases characterized by monocytic infiltrates, like psoriasis, rheumatoid arthritis or atherosclerosis. May be involved in the recruitment of monocytes into the arterial wall during the disease process of atherosclerosis.

### Sequence similarities

Belongs to the intercrine beta (chemokine CC) family.

### Post-translational modifications

Processing at the N-terminus can regulate receptor and target cell selectivity. Deletion of the N-terminal residue converts it from an activator of basophil to an eosinophil chemoattractant.

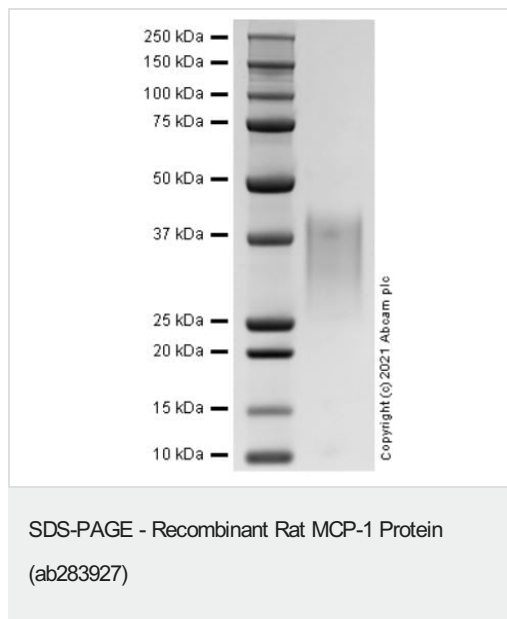
### Cellular localization

Secreted.

---

## Images

---



SDS-PAGE analysis of ab283927.

**Please note:** All products are "FOR RESEARCH USE ONLY. NOT FOR USE IN DIAGNOSTIC PROCEDURES"

## Our Abpromise to you: Quality guaranteed and expert technical support

---

- Replacement or refund for products not performing as stated on the datasheet
- Valid for 12 months from date of delivery

- Response to your inquiry within 24 hours
- We provide support in Chinese, English, French, German, Japanese and Spanish
- Extensive multi-media technical resources to help you
- We investigate all quality concerns to ensure our products perform to the highest standards

If the product does not perform as described on this datasheet, we will offer a refund or replacement. For full details of the Abpromise, please visit <https://www.abcam.com/abpromise> or contact our technical team.

### **Terms and conditions**

---

- Guarantee only valid for products bought direct from Abcam or one of our authorized distributors