

## Product datasheet

# Recombinant rat CNTF protein ab129035

[2 Images](#)

### Description

---

<b>Product name</b>	Recombinant rat CNTF protein	
<b>Biological activity</b>	Measured in a cell proliferation assay using TF1 Human erythroleukemic cells. The ED <sub>50</sub> for this effect is typically 3 - 15 ng/ml.	
<b>Purity</b>	> 98 % SDS-PAGE. Purity determined by SDS-PAGE and HPLC.	
<b>Expression system</b>	Escherichia coli	
<b>Accession</b>	<a href="#">P20294</a>	
<b>Protein length</b>	Full length protein	
<b>Animal free</b>	No	
<b>Nature</b>	Recombinant	
<b>Species</b>	Rat	
<b>Sequence</b>	<p>AFAEQTPLTLHRRDLCRSRWLARKIRSDLTALMESYVKHQ            GLNKNINLD            SVDGVPVASTDRWSEMTEAERLQENLQAYRTFQGMLTKL            LEDQRVHFTPT            EGDFHQAIHTLMLQVSAFAYQLEELMVLEQKIPENEADG            MPATVGDGGL            FEKKLWGLKVLQELSQWTVRSIHDLRVISSHQMGISALES            HYGAKDKQMA            FAEQTPLTLHRRDLCRSRWLARKIRSDLTALMESYVKHQ            GLNKNINLDS            VDGVVPVASTDRWSEMTEAERLQENLQAYRTFQGMLTKLL            EDQRVHFTPTE            GDFHQAIHTLMLQVSAFAYQLEELMVLEQKIPENEADGM            PATVGDGGLF            EKKLWGLKVLQELSQWTVRSIHDLRVISSHQMGISALESH            YGAKDKQM</p>	
<b>Predicted molecular weight</b>	23 kDa	
<b>Amino acids</b>	2 to 200	

### Specifications

---

Our [Abpromise guarantee](#) covers the use of **ab129035** in the following tested applications.

The application notes include recommended starting dilutions; optimal dilutions/concentrations should be determined by the end user.

<b>Applications</b>	Functional Studies SDS-PAGE
<b>Form</b>	Lyophilized

## Preparation and Storage

---

<b>Stability and Storage</b>	Shipped at 4°C. Store at -20°C. Store under desiccating conditions. Constituent: 0.06% Tris This product is an active protein and may elicit a biological response in vivo, handle with caution.
------------------------------	--

<b>Reconstitution</b>	ab129035 is soluble in water and most aqueous buffers. The lyophilized protein should be reconstituted in water to a concentration of 100 µg/ml. This solution can be diluted with water or other buffered solutions or stored at -20°C for future use. Reconstituted ab129035 should be stored in working aliquots at -20°C. Avoid repeated freeze-thaw cycles.
-----------------------	--

## General Info

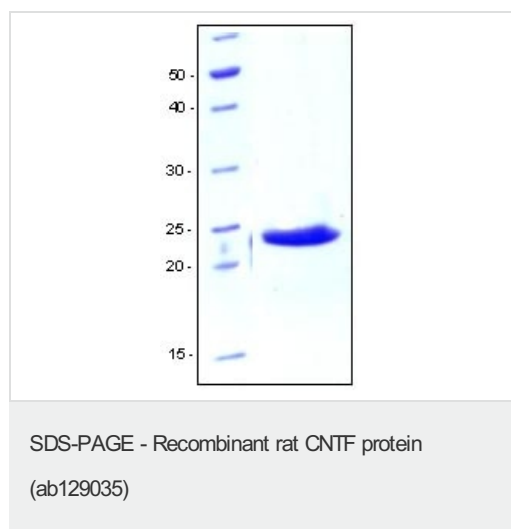
---

<b>Function</b>	CNTF is a survival factor for various neuronal cell types. Seems to prevent the degeneration of motor axons after axotomy.
<b>Tissue specificity</b>	Nervous system.
<b>Sequence similarities</b>	Belongs to the CNTF family.
<b>Cellular localization</b>	Cytoplasm.

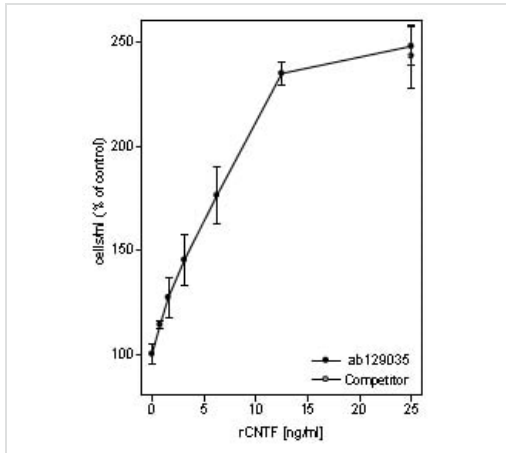
---

## Images

---



SDS-PAGE analysis of ab129035.  
Sample was loaded in 15% SDS-polyacrylamide gel and stained with Coomassie blue.



Proliferation assay with TF1 cells.

Functional Studies - Recombinant rat CNTF protein  
(ab129035)

**Please note:** All products are "FOR RESEARCH USE ONLY. NOT FOR USE IN DIAGNOSTIC PROCEDURES"

### Our Abpromise to you: Quality guaranteed and expert technical support

- Replacement or refund for products not performing as stated on the datasheet
- Valid for 12 months from date of delivery
- Response to your inquiry within 24 hours
- We provide support in Chinese, English, French, German, Japanese and Spanish
- Extensive multi-media technical resources to help you
- We investigate all quality concerns to ensure our products perform to the highest standards

If the product does not perform as described on this datasheet, we will offer a refund or replacement. For full details of the Abpromise, please visit <https://www.abcam.com/abpromise> or contact our technical team.

### Terms and conditions

- Guarantee only valid for products bought direct from Abcam or one of our authorized distributors