

Product datasheet

Recombinant rat CXCL14 protein (Active) ab243759

1 Image

Description

Product name	Recombinant rat CXCL14 protein (Active)	
Biological activity	Fully biologically active when compared to standard. The biological activity determined by a chemotaxis bioassay using human monocytes is in a concentration range of 1.0-10 ng/ml.	
Endotoxin level	< 1.000 Eu/µg	
Expression system	Escherichia coli	
Accession	Q8K453	
Protein length	Full length protein	
Animal free	No	
Nature	Recombinant	
Species	Rat	
Sequence	SKCKCSRKGPKIRYSDVKKLEMKPKYPHCEEKMMIITTKS MSRYRGQEHCLHPKQLQSTKRFIKWYNWNEKRRVYEE	
Predicted molecular weight	9 kDa	
Amino acids	23 to 99	
Additional sequence information	Full-length mature chain lacking the signal peptide.	

Specifications

Our [Abpromise guarantee](#) covers the use of **ab243759** in the following tested applications.

The application notes include recommended starting dilutions; optimal dilutions/concentrations should be determined by the end user.

Applications	HPLC
	SDS-PAGE
	Functional Studies
Form	Lyophilized

Preparation and Storage

Stability and Storage	Shipped at 4°C. Store at -20°C or -80°C. Avoid freeze / thaw cycle. Constituent: PBS
------------------------------	---

0.2 µm filtered

This product is an active protein and may elicit a biological response in vivo, handle with caution.

Reconstitution

We recommend that this vial be briefly centrifuged prior to opening to bring the contents to the bottom. Reconstitute in sterile distilled water or aqueous buffer containing 0.1% BSA to a concentration of 0.1-1.0 mg/mL. Stock solutions should be apportioned into working aliquots and stored at -20 °C. Further dilutions should be made in appropriate buffered solutions.

General Info

Function

Potent chemoattractant for neutrophils, and weaker for dendritic cells. Not chemotactic for T-cells, B-cells, monocytes, natural killer cells or granulocytes. Does not inhibit proliferation of myeloid progenitors in colony formation assays.

Tissue specificity

Expressed in heart, brain, placenta, lung, liver, skeletal muscle, kidney and pancreas. Highly expressed in normal tissue without inflammatory stimuli and infrequently expressed in cancer cell lines. Weakly expressed in monocyte-derived dendritic cells. Not detected in lung or unstimulated peripheral blood lymphocytes.

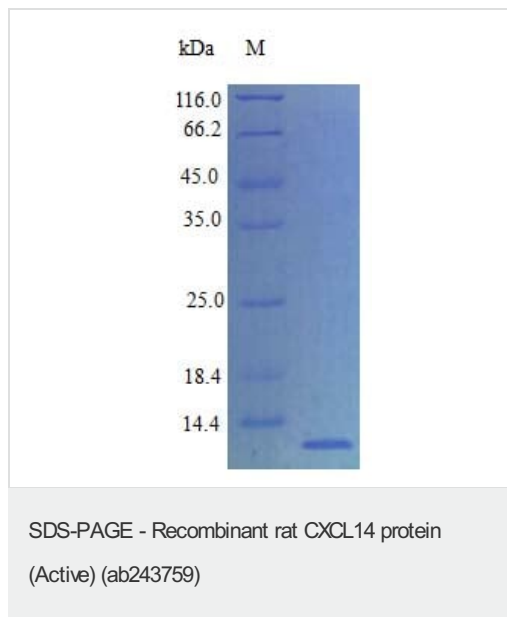
Sequence similarities

Belongs to the intercrine alpha (chemokine CxC) family.

Cellular localization

Secreted.

Images



SDS-PAGE analysis of ab243759

Please note: All products are "FOR RESEARCH USE ONLY. NOT FOR USE IN DIAGNOSTIC PROCEDURES"

Our Abpromise to you: Quality guaranteed and expert technical support

- Replacement or refund for products not performing as stated on the datasheet
- Valid for 12 months from date of delivery
- Response to your inquiry within 24 hours

- We provide support in Chinese, English, French, German, Japanese and Spanish
- Extensive multi-media technical resources to help you
- We investigate all quality concerns to ensure our products perform to the highest standards

If the product does not perform as described on this datasheet, we will offer a refund or replacement. For full details of the Abpromise, please visit <https://www.abcam.com/abpromise> or contact our technical team.

Terms and conditions

- Guarantee only valid for products bought direct from Abcam or one of our authorized distributors