

Product datasheet

Recombinant rat GM-CSF protein ab198565

1 Image

Description

<b>Product name</b>	Recombinant rat GM-CSF protein	
<b>Biological activity</b>	The activity is determined by the dose-dependent proliferation of mouse FDC-P1 cell line and is typically less than 100 pg/mL.	
<b>Purity</b>	<p>&gt;= 97 % SDS-PAGE.</p> <p>Protein Content and Purity (typically = 97%) determined by: UV spectroscopy at 280 nm. RP-HPLC calibrated against a known standard. Quantitation against a known standard via reducing and non-reducing SDS-PAGE gels.</p>	
<b>Endotoxin level</b>	<=1.000 Eu/µg	
<b>Expression system</b>	Escherichia coli	
<b>Accession</b>	<a href="#">P48750</a>	
<b>Protein length</b>	Full length protein	
<b>Animal free</b>	No	
<b>Nature</b>	Recombinant	
<b>Species</b>	Rat	
<b>Sequence</b>	<p>MAPTRSPNPVTRPWKHVDAIKEALSLNDRALENEKNE            DVDIISNEFSI            QRPTCVQTRLKLYKQGLRGNLTKLNGALTMASHYQTNCNP            PTPETDCEIE VTTFEDFIKNLKGFLFDIPDCWKPVQK</p>	
<b>Predicted molecular weight</b>	15 kDa	
<b>Amino acids</b>	18 to 144	
<b>Additional sequence information</b>	This product is for the mature full length protein. The signal peptide is not included.	

Specifications

Our [Abpromise guarantee](#) covers the use of **ab198565** in the following tested applications.

The application notes include recommended starting dilutions; optimal dilutions/concentrations should be determined by the end user.

<b>Applications</b>	<p>SDS-PAGE</p> <p>HPLC</p> <p>Functional Studies</p>
<b>Form</b>	Lyophilized

## Preparation and Storage

### Stability and Storage

Shipped at 4°C. Store at -20°C long term. For long term storage it is recommended to add a carrier protein on reconstitution (0.1% HSA or BSA).

Constituent: 0.17% Sodium bicarbonate

This product is an active protein and may elicit a biological response in vivo, handle with caution.

### Reconstitution

It is recommended to reconstitute the lyophilized product with sterile water at a concentration of 0.1 mg/mL, which can be further diluted into other aqueous solutions.

## General Info

### Function

Cytokine that stimulates the growth and differentiation of hematopoietic precursor cells from various lineages, including granulocytes, macrophages, eosinophils and erythrocytes.

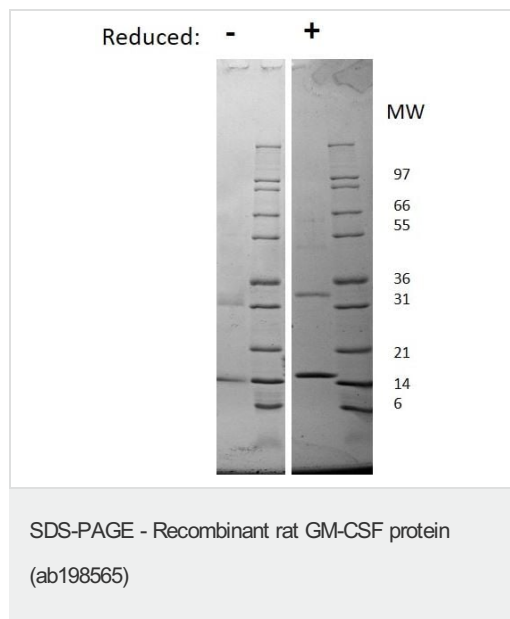
### Sequence similarities

Belongs to the GM-CSF family.

### Cellular localization

Secreted.

## Images



SDS PAGE analysis of ab198565 under non-reducing (-) and reducing (+) conditions. Stained with Coomassie Blue.

**Please note:** All products are "FOR RESEARCH USE ONLY. NOT FOR USE IN DIAGNOSTIC PROCEDURES"

## Our Abpromise to you: Quality guaranteed and expert technical support

- Replacement or refund for products not performing as stated on the datasheet
- Valid for 12 months from date of delivery
- Response to your inquiry within 24 hours
- We provide support in Chinese, English, French, German, Japanese and Spanish
- Extensive multi-media technical resources to help you

- We investigate all quality concerns to ensure our products perform to the highest standards

If the product does not perform as described on this datasheet, we will offer a refund or replacement. For full details of the Abpromise, please visit <https://www.abcam.com/abpromise> or contact our technical team.

### **Terms and conditions**

---

- Guarantee only valid for products bought direct from Abcam or one of our authorized distributors