

Product datasheet

Recombinant Rat MRP8 protein (His tag) ab226448

1 Image

Description

<b>Product name</b>	Recombinant Rat MRP8 protein (His tag)	
<b>Purity</b>	> 90 % SDS-PAGE.	
<b>Expression system</b>	Escherichia coli	
<b>Accession</b>	<a href="#">P50115</a>	
<b>Protein length</b>	Full length protein	
<b>Animal free</b>	No	
<b>Nature</b>	Recombinant	
<b>Species</b>	Rat	
<b>Sequence</b>	ATELEKALSNVIEVYHNYSGIKGNHHALYRDDFRKMVTT ECPQFVQNKNT ESLFKELDVNSDNAINFEEFLVLVIRVGVAAHKDSHKE	
<b>Predicted molecular weight</b>	14 kDa including tags	
<b>Amino acids</b>	2 to 89	
<b>Tags</b>	His tag N-Terminus	

Specifications

Our [Abpromise guarantee](#) covers the use of **ab226448** in the following tested applications.

The application notes include recommended starting dilutions; optimal dilutions/concentrations should be determined by the end user.

<b>Applications</b>	SDS-PAGE
<b>Form</b>	Liquid

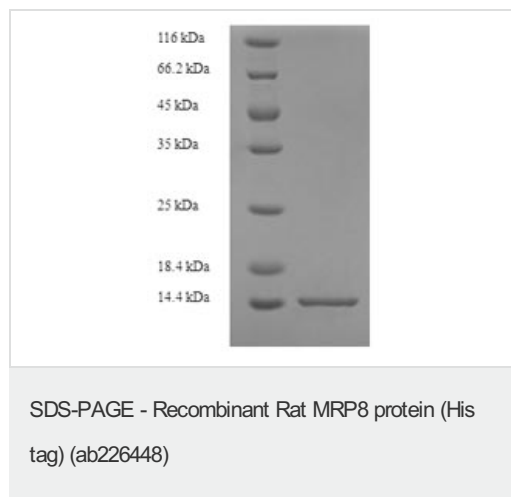
Preparation and Storage

<b>Stability and Storage</b>	Shipped at 4°C. Upon delivery aliquot. Store at -20°C or -80°C. Avoid freeze / thaw cycle. Constituents: Tris buffer, 50% Glycerol
------------------------------	---

General Info

<b>Function</b>	Calcium-binding protein. Has antimicrobial activity towards bacteria and fungi. Important for resistance to invasion by pathogenic bacteria. Up-regulates transcription of genes that are under the control of NF-kappa-B. Plays a role in the development of endotoxic shock in response to bacterial lipopolysaccharide (LPS) (By similarity). Promotes tubulin polymerization. Promotes phagocyte migration and infiltration of granulocytes at sites of wounding. Plays a role as pro-inflammatory mediator in acute and chronic inflammation and up-regulates the release of IL8 and cell-surface expression of ICAM1. Extracellular calprotectin binds to target cells and promotes apoptosis. Antimicrobial and proapoptotic activity is inhibited by zinc ions.
<b>Tissue specificity</b>	Expressed by macrophages in chronic inflammations. Also expressed in epithelial cells constitutively or induced during dermatoses.
<b>Sequence similarities</b>	Belongs to the S-100 family. Contains 2 EF-hand domains.
<b>Cellular localization</b>	Secreted. Cytoplasm. Cytoplasm > cytoskeleton. Cell membrane. Associates with tubulin filaments in activated monocytes. Targeted to the cell surface upon calcium influx. Released from blood leukocytes upon exposure to CSF2/GM-CSF, bacterial lipopolysaccharide (LPS) and during inflammatory processes. Serum levels are high in patients suffering from chronic inflammation.

## Images



(Tris-Glycine gel) Discontinuous SDS-PAGE (reduced) with 5% enrichment gel and 15% separation gel.

**Please note:** All products are "FOR RESEARCH USE ONLY. NOT FOR USE IN DIAGNOSTIC PROCEDURES"

## Our Abpromise to you: Quality guaranteed and expert technical support

- Replacement or refund for products not performing as stated on the datasheet
- Valid for 12 months from date of delivery
- Response to your inquiry within 24 hours
- We provide support in Chinese, English, French, German, Japanese and Spanish
- Extensive multi-media technical resources to help you
- We investigate all quality concerns to ensure our products perform to the highest standards

If the product does not perform as described on this datasheet, we will offer a refund or replacement. For full details of the Abpromise,

please visit <https://www.abcam.com/abpromise> or contact our technical team.

## **Terms and conditions**

---

- Guarantee only valid for products bought direct from Abcam or one of our authorized distributors