

Product datasheet

Recombinant rat Prolactin Receptor/PRL-R protein
ab170083

2 Images

Description

Product name	Recombinant rat Prolactin Receptor/PRL-R protein	
Biological activity	ED ₅₀ <50 ng/ml in the presence of 0.5 ng/ml of recombinant Human prolactin as determined in a cell proliferation assay using Nb2-11 rat lymphoma cells.	
Purity	> 95 % SDS-PAGE. ab170083 was purified by chromatography, sterile filtered and lyophilized.	
Expression system	Insect cells	
Accession	P05710	
Protein length	Protein fragment	
Animal free	No	
Nature	Recombinant	
Species	Rat	
Sequence	SPPGKPEIHKCRSPDKETFTCWWNPGTDGGLPTNYSLTY SKEGEKTTYEC PDYKTSGPNSCFFSKQYTSIWKIYITVNATNQMGSSSSDPL YVDVTYM EPEPPRNLTEVKQLKDKKTYLWVKWSPPTITDVKTGWFT MEYEIRLKPE EAEEWEIHFTGHQTQFKVFDLYPGQKYLVTQTRCKPDHGY WSRWSQESSVE MPNDFTLKD	
Predicted molecular weight	51 kDa	
Amino acids	21 to 229	

Specifications

Our [Abpromise guarantee](#) covers the use of **ab170083** in the following tested applications.

The application notes include recommended starting dilutions; optimal dilutions/concentrations should be determined by the end user.

Applications	SDS-PAGE Functional Studies
Form	Lyophilized

Additional notes

Previously labelled as Prolactin Receptor.

Preparation and Storage

Stability and Storage

Shipped at 4°C. Store at -80°C.

pH: 7.4

Constituent: 100% PBS

This product is an active protein and may elicit a biological response in vivo, handle with caution.

Reconstitution

Add 0.5ml deionized water. Aliquot and freeze unused portion.

General Info

Function

This is a receptor for the anterior pituitary hormone prolactin (PRL). Isoform 4 is unable to transduce prolactin signaling. Isoform 6 is unable to transduce prolactin signaling.

Tissue specificity

Expressed in breast, placenta, kidney, liver and pancreas.

Sequence similarities

Belongs to the type I cytokine receptor family. Type 1 subfamily.

Contains 2 fibronectin type-III domains.

Domain

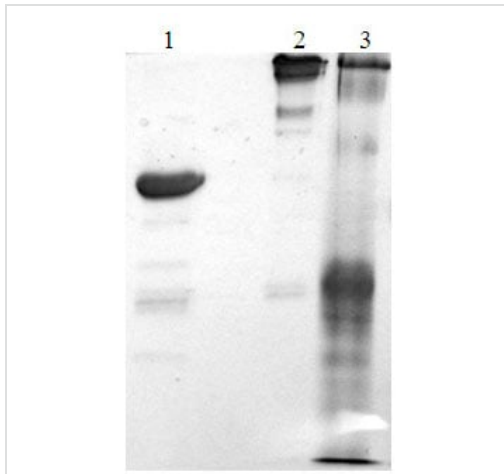
The WSXWS motif appears to be necessary for proper protein folding and thereby efficient intracellular transport and cell-surface receptor binding.

The box 1 motif is required for JAK interaction and/or activation.

Cellular localization

Secreted and Membrane.

Images



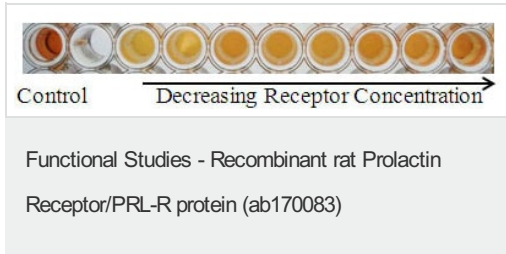
SDS-PAGE analysis of ab170083.

Lane 1: 3 µg reduced

Lane 2: 3 µg Non-reduced

Lane 3: Molecular weight markers

SDS-PAGE - Recombinant rat Prolactin
Receptor/PRL-R protein (ab170083)



Inhibition of prolactin-induced proliferation of Nb2-11 rat lymphoma cells by ab170083.

Please note: All products are "FOR RESEARCH USE ONLY. NOT FOR USE IN DIAGNOSTIC PROCEDURES"

Our Abpromise to you: Quality guaranteed and expert technical support

- Replacement or refund for products not performing as stated on the datasheet
- Valid for 12 months from date of delivery
- Response to your inquiry within 24 hours
- We provide support in Chinese, English, French, German, Japanese and Spanish
- Extensive multi-media technical resources to help you
- We investigate all quality concerns to ensure our products perform to the highest standards

If the product does not perform as described on this datasheet, we will offer a refund or replacement. For full details of the Abpromise, please visit <https://www.abcam.com/abpromise> or contact our technical team.

Terms and conditions

- Guarantee only valid for products bought direct from Abcam or one of our authorized distributors