

Product datasheet

Recombinant rhesus monkey CD134 / OX40L receptor protein (Active) ab221322

2 Images

Description

Product name	Recombinant rhesus monkey CD134 / OX40L receptor protein (Active)	
Biological activity	Measured by its binding ability in a functional ELISA. Immobilized Recombinant rhesus monkey CD134 / OX40L receptor protein (ab221322) at 2 µg/mL (100 µL/well) can bind Recombinant human OX40L/TNFSF4 protein (Fc Chimera Active) (ab206011) with a linear range of 4-63 ng/mL.	
Purity	> 95 % SDS-PAGE.	
Endotoxin level	< 1.000 Eu/µg	
Expression system	HEK 293 cells	
Accession	XP_001090870.1	
Protein length	Protein fragment	
Animal free	No	
Nature	Recombinant	
Species	Rhesus monkey	
Sequence	KLHCVGDTYPSNDRCCQECRPGNGMVSR CNRSQNTVCR PCGPGFYNDVVS AKPCKACTWCNLRSGSERKQPCTATQDTVCR CRAGTQP LDSYKPGVDCAP CPPGHFSPGDNQACKPWTNCTLAGKHTLQPASNSSDAIC EDRDPPPTQPQ ETQGPPARPTTVQPTEAWPRTSQRPSTRPVEVPRGPA	
Predicted molecular weight	22 kDa including tags	
Amino acids	28 to 214	
Tags	His tag C-Terminus	

Specifications

Our [Abpromise guarantee](#) covers the use of **ab221322** in the following tested applications.

The application notes include recommended starting dilutions; optimal dilutions/concentrations should be determined by the end user.

Applications	SDS-PAGE
---------------------	----------

Functional Studies

ELISA

Form Lyophilized

Preparation and Storage

Stability and Storage Shipped at 4°C. Store at -20°C or -80°C. Avoid freeze / thaw cycle.

pH: 7.40

Constituents: 95% PBS, 5% Trehalose

Lyophilized from 0.22 µm filtered solution.

This product is an active protein and may elicit a biological response in vivo, handle with caution.

Reconstitution Reconstitute with sterile deionized water to a concentration of 200 µg/ml.

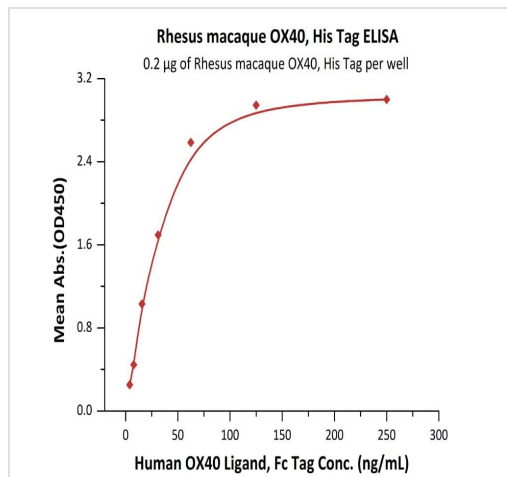
General Info

Function Receptor for TNFSF4/OX40L/GP34.

Sequence similarities Contains 4 TNFR-Cys repeats.

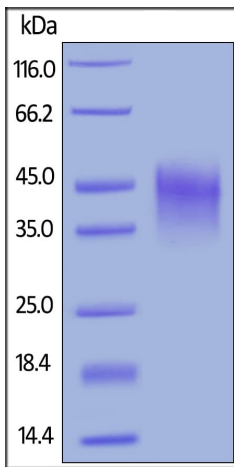
Cellular localization Membrane.

Images



Immobilized Recombinant rhesus monkey CD134 / OX40L receptor protein (ab221322) at 2 µg/mL (100 µL/well) can bind Recombinant human OX40L/TNFSF4 protein (Fc Chimera Active) (ab206011) with a linear range of 4-63 ng/mL.

ELISA - Recombinant rhesus monkey CD134 / OX40L receptor protein (Active) (ab221322)



SDS-PAGE - Recombinant rhesus monkey CD134 / OX40L receptor protein (Active) (ab221322)

SDS-PAGE of reduced ab221322 stained overnight with Coomassie Blue. The protein migrates as 33-50 kDa under reducing conditions.

Please note: All products are "FOR RESEARCH USE ONLY. NOT FOR USE IN DIAGNOSTIC PROCEDURES"

Our Abpromise to you: Quality guaranteed and expert technical support

- Replacement or refund for products not performing as stated on the datasheet
- Valid for 12 months from date of delivery
- Response to your inquiry within 24 hours
- We provide support in Chinese, English, French, German, Japanese and Spanish
- Extensive multi-media technical resources to help you
- We investigate all quality concerns to ensure our products perform to the highest standards

If the product does not perform as described on this datasheet, we will offer a refund or replacement. For full details of the Abpromise, please visit <https://www.abcam.com/abpromise> or contact our technical team.

Terms and conditions

- Guarantee only valid for products bought direct from Abcam or one of our authorized distributors