

Product datasheet

Recombinant rhesus monkey GM-CSF protein (Active)
 ab243115

1 Image

Description

Product name	Recombinant rhesus monkey GM-CSF protein (Active)	
Biological activity	Fully biologically active when compared to standard. The ED ₅₀ as determined by a cell proliferation assay using human TF-1 cells is less than 0.1 ng/ml, corresponding to a specific activity of >1.0x10 ⁷ IU/mg.	
Purity	> 98 % SDS-PAGE. > 98 % by HPLC.	
Endotoxin level	< 1.000 Eu/μg	
Expression system	Escherichia coli	
Accession	Q9GL44	
Protein length	Full length protein	
Animal free	No	
Nature	Recombinant	
Species	Rhesus monkey	
Sequence	APARSPSPGTQPWEHVNAIQEARRLLNLSRD TAAEMNKT VEVVSEMF DLQ EPSCLQTRLELYKQGLQGSLTKLKGPLTMMASHYKQHCP PTPETSCATQI ITFQSFKENLKDFLLVIPFDCWEPVQE	
Predicted molecular weight	16 kDa	
Amino acids	18 to 144	
Additional sequence information	This product is the mature full length protein from aa 18 to 144. The signal peptide is not included.	

Specifications

Our [Abpromise guarantee](#) covers the use of **ab243115** in the following tested applications.

The application notes include recommended starting dilutions; optimal dilutions/concentrations should be determined by the end user.

Applications	Functional Studies
	SDS-PAGE
	HPLC
Form	Lyophilized

Preparation and Storage

Stability and Storage

Shipped at 4°C. Store at -20°C or -80°C. Avoid freeze / thaw cycle.

Constituent: PBS

0.2 µm filtered.

This product is an active protein and may elicit a biological response in vivo, handle with caution.

Reconstitution

Briefly centrifuge prior to opening to bring the contents to the bottom. Reconstitute in sterile distilled water or aqueous buffer containing 0.1 % BSA to a concentration of 0.1-1.0 mg/mL. Stock solutions should be apportioned into working aliquots and stored at -20 °C or below. Further dilutions should be made in appropriate buffered solutions.

General Info

Function

Cytokine that stimulates the growth and differentiation of hematopoietic precursor cells from various lineages, including granulocytes, macrophages, eosinophils and erythrocytes.

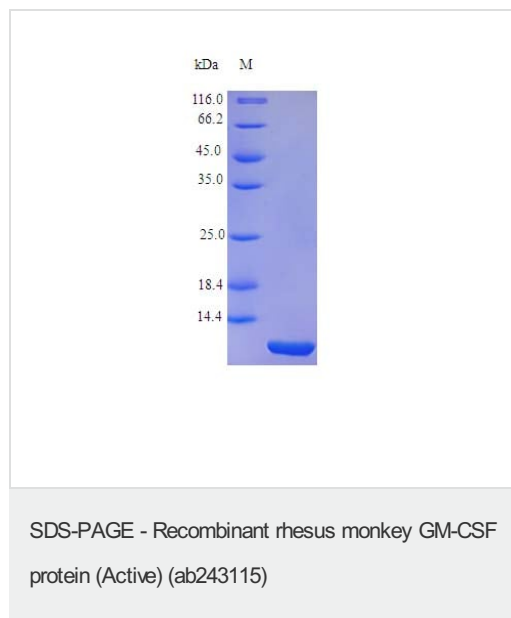
Sequence similarities

Belongs to the GM-CSF family.

Cellular localization

Secreted.

Images



SDS Page analysis of ab243115

Please note: All products are "FOR RESEARCH USE ONLY. NOT FOR USE IN DIAGNOSTIC PROCEDURES"

Our Abpromise to you: Quality guaranteed and expert technical support

- Replacement or refund for products not performing as stated on the datasheet
- Valid for 12 months from date of delivery

- Response to your inquiry within 24 hours
- We provide support in Chinese, English, French, German, Japanese and Spanish
- Extensive multi-media technical resources to help you
- We investigate all quality concerns to ensure our products perform to the highest standards

If the product does not perform as described on this datasheet, we will offer a refund or replacement. For full details of the Abpromise, please visit <https://www.abcam.com/abpromise> or contact our technical team.

Terms and conditions

- Guarantee only valid for products bought direct from Abcam or one of our authorized distributors