

Product datasheet

Recombinant *S. cerevisiae* 2-deoxyglucose-6-phosphate phosphatase 1 protein (His tag) ab241228

3 Images

Description

Product name	Recombinant <i>S. cerevisiae</i> 2-deoxyglucose-6-phosphate phosphatase 1 protein (His tag)	
Purity	> 90 % SDS-PAGE.	
Expression system	Yeast	
Accession	P38774	
Protein length	Full length protein	
Animal free	No	
Nature	Recombinant	
Species	Saccharomyces cerevisiae	
Sequence	MAEFSADLCLFLDLDGTVSTTVAAEKAWTKLCYEYGVDPSE ELFKHSHGAR TQEVLRFFPKLDDTDNKGVLALEKDIAHSYLDTVSLIPGA ENLLSLDV DTETQKKLPERKWAMTSGSPYLAFSWFETILKNVGKPKV FITGFDVKNG KPDPEGYSRARDLLRQDLQLTGKQDLKYVVFEDAPVGIK AGKAMGAI TVG ITSSYDKSVLFDAGADYVVCDLTQVSVVKNNENGMIVQVNN PLTRA	
Predicted molecular weight	29 kDa including tags	
Amino acids	1 to 246	
Tags	His tag N-Terminus	
Additional sequence information	Strain ATCC 204508 / S288c (Baker's yeast).	

Specifications

Our [Abpromise guarantee](#) covers the use of **ab241228** in the following tested applications.

The application notes include recommended starting dilutions; optimal dilutions/concentrations should be determined by the end user.

Applications	SDS-PAGE
	Mass Spectrometry

Mass spectrometry LC-MS/MS

Form Liquid

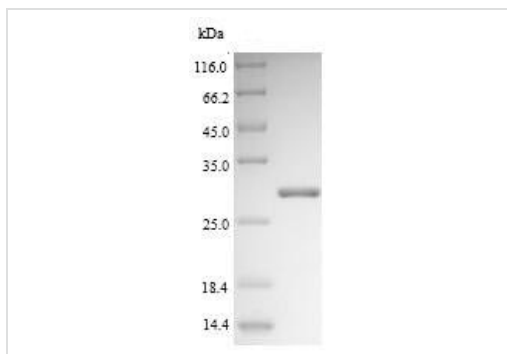
Preparation and Storage

Stability and Storage

Shipped at 4°C. Store at -20°C or -80°C. Avoid freeze / thaw cycle.

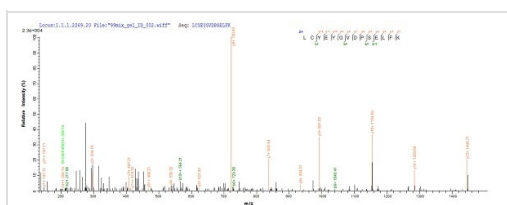
Constituents: Tris buffer, 50% Glycerol (glycerin, glycerine)

Images



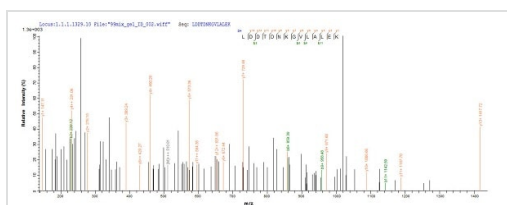
SDS-PAGE - Recombinant *S. cerevisiae* 2-deoxyglucose-6-phosphate phosphatase 1 protein (His tag) (ab241228)

(Tris-Glycine gel) Discontinuous SDS-PAGE (reduced) analysis with 5% enrichment gel and 15% separation gel of ab241228.



Mass Spectrometry - Recombinant *S. cerevisiae* 2-deoxyglucose-6-phosphate phosphatase 1 protein (His tag) (ab241228)

Based on the SEQUEST from database of Yeast host and target protein, the LC-MS/MS analysis result of ab241228 could indicate that this peptide derived from Yeast-expressed *Saccharomyces cerevisiae* (strain ATCC 204508 / S288c) (Baker's yeast) 2-deoxyglucose-6-phosphate phosphatase 1.



Mass Spectrometry - Recombinant *S. cerevisiae* 2-deoxyglucose-6-phosphate phosphatase 1 protein (His tag) (ab241228)

Based on the SEQUEST from database of Yeast host and target protein, the LC-MS/MS analysis result of ab241228 could indicate that this peptide derived from Yeast-expressed *Saccharomyces cerevisiae* (strain ATCC 204508 / S288c) (Baker's yeast) 2-deoxyglucose-6-phosphate phosphatase 1.

Please note: All products are "FOR RESEARCH USE ONLY. NOT FOR USE IN DIAGNOSTIC PROCEDURES"

Our Abpromise to you: Quality guaranteed and expert technical support

- Replacement or refund for products not performing as stated on the datasheet
- Valid for 12 months from date of delivery
- Response to your inquiry within 24 hours

- We provide support in Chinese, English, French, German, Japanese and Spanish
- Extensive multi-media technical resources to help you
- We investigate all quality concerns to ensure our products perform to the highest standards

If the product does not perform as described on this datasheet, we will offer a refund or replacement. For full details of the Abpromise, please visit <https://www.abcam.com/abpromise> or contact our technical team.

Terms and conditions

- Guarantee only valid for products bought direct from Abcam or one of our authorized distributors