

Product datasheet

Anti-RED antibody ab85965

[2 Images](#)

Overview

Product name	Anti-RED antibody
Description	Rabbit polyclonal to RED
Host species	Rabbit
Tested applications	Suitable for: WB, IP
Species reactivity	Reacts with: Human Predicted to work with: Chimpanzee, Gorilla
Immunogen	Synthetic peptide designed between residues 507 and 557 of Human RED (NP_006074.2)
Positive control	HeLa cell lysate

Properties

Form	Liquid
Storage instructions	Shipped at 4°C. Upon delivery aliquot and store at -20°C. Avoid freeze / thaw cycles.
Storage buffer	Preservative: 0.09% Sodium azide Constituents: Tris buffered saline, 0.1% BSA
Purity	Immunogen affinity purified
Clonality	Polyclonal
Isotype	IgG

Applications

Our [Abpromise guarantee](#) covers the use of **ab85965** in the following tested applications.

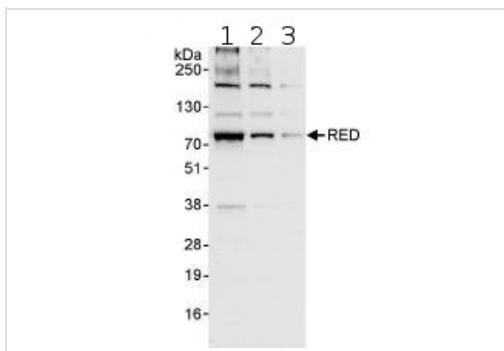
The application notes include recommended starting dilutions; optimal dilutions/concentrations should be determined by the end user.

Application	Abreviews	Notes
WB		1/2000 - 1/10000. Predicted molecular weight: 66 kDa.
IP		Use at 2-5 µg/mg of lysate.

Target

Function	May bind to chromatin.
Tissue specificity	Ubiquitous.
Sequence similarities	Belongs to the RED family.
Developmental stage	Expressed at similar levels in fetal and adult tissues.
Post-translational modifications	Phosphorylated upon DNA damage, probably by ATM or ATR.
Cellular localization	Nucleus.

Images



Western blot - Anti-RED antibody (ab85965)

All lanes : Anti-RED antibody (ab85965) at 0.04 $\mu\text{g/ml}$

Lane 1 : HeLa whole cell lysate at 50 μg

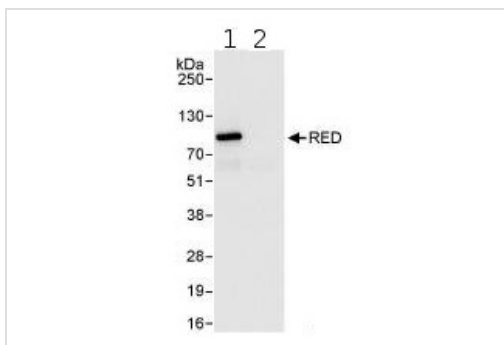
Lane 2 : HeLa whole cell lysate at 15 μg

Lane 3 : HeLa whole cell lysate at 5 μg

Developed using the ECL technique.

Predicted band size: 66 kDa

Exposure time: 10 seconds



Immunoprecipitation - Anti-RED antibody (ab85965)

1mg HeLa whole cell lysate was immunoprecipitated using 3 μg ab85965.

20% of IP was loaded per lane and probed with with ab85965 at 1 $\mu\text{g/ml}$ (lane 1) and with a control IgG (lane 2).

Detection: chemiluminescence with an exposure time of 10 seconds.

Please note: All products are "FOR RESEARCH USE ONLY AND ARE NOT INTENDED FOR DIAGNOSTIC OR THERAPEUTIC USE"

Our Abpromise to you: Quality guaranteed and expert technical support

- Replacement or refund for products not performing as stated on the datasheet
- Valid for 12 months from date of delivery
- Response to your inquiry within 24 hours

- We provide support in Chinese, English, French, German, Japanese and Spanish
- Extensive multi-media technical resources to help you
- We investigate all quality concerns to ensure our products perform to the highest standards

If the product does not perform as described on this datasheet, we will offer a refund or replacement. For full details of the Abpromise, please visit <https://www.abcam.com/abpromise> or contact our technical team.

Terms and conditions

- Guarantee only valid for products bought direct from Abcam or one of our authorized distributors