

Product datasheet

Anti-Ref2P antibody ab178440

★★★★★ 2 Abreviews 10 References 2 Images

Overview

Product name	Anti-Ref2P antibody
Description	Rabbit polyclonal to Ref2P
Host species	Rabbit
Tested applications	Suitable for: WB
Species reactivity	Reacts with: Drosophila melanogaster
Immunogen	Synthetic peptide corresponding to Drosophila melanogaster Ref2P aa 200-300 conjugated to keyhole limpet haemocyanin. Database link: P14199
Positive control	This antibody gave a positive signal in Atg8a mutant Fruit Flies (D.melanogaster).

Properties

Form	Liquid
Storage instructions	Shipped at 4°C. Store at +4°C short term (1-2 weeks). Upon delivery aliquot. Store at -20°C or -80°C. Avoid freeze / thaw cycle.
Storage buffer	pH: 7.40 Preservative: 0.02% Sodium azide Constituent: PBS Batches of this product that have a concentration < 1mg/ml may have BSA added as a stabilising agent. If you would like information about the formulation of a specific lot, please contact our scientific support team who will be happy to help.
Purity	Immunogen affinity purified
Clonality	Polyclonal
Isotype	IgG

Applications

Our [Abpromise guarantee](#) covers the use of **ab178440** in the following tested applications.

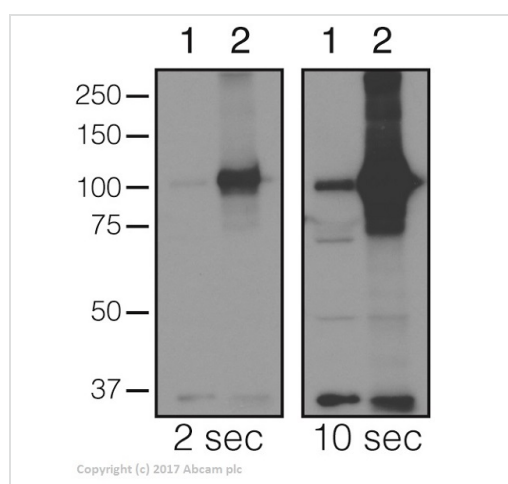
The application notes include recommended starting dilutions; optimal dilutions/concentrations should be determined by the end user.

Application	Abreviews	Notes
WB		1/100. Detects a band of approximately 92 kDa (predicted molecular weight: 65 kDa).

Target

Function	Implicated in sigma rhabdovirus multiplication and necessary for male fertility.
Sequence similarities	Contains 1 OPR domain. Contains 1 UBA domain. Contains 1 ZZ-type zinc finger.
Cellular localization	Nucleus.

Images



Western blot - Anti-Ref2P antibody (ab178440)

This image is courtesy of Dr Anne-Claire Jacomin / Ioannis Nezis Lab, University of Warwick

All lanes : Anti-Ref2P antibody (ab178440) at 1/500 dilution
(Blocking 60 minutes in TBS+0.1% Tween-20 + 5% non-fat milk)

Lane 1 : Wt adult drosophila lysate

Lane 2 : Atg8a mutant adult drosophila lysate

Lysates/proteins at 20 µg per lane.

Secondary

All lanes : Anti-rabbit HRP at 1/10000 dilution

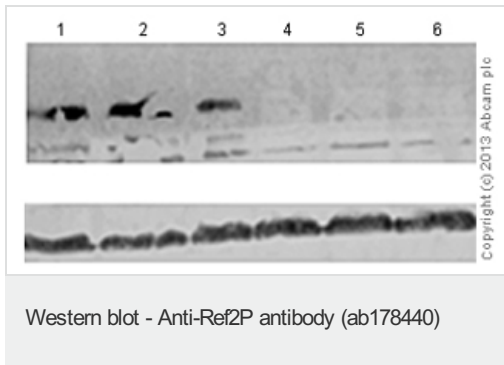
Predicted band size: 65 kDa

Observed band size: 100 kDa

[why is the actual band size different from the predicted?](#)

Exposure time: 2 seconds

Gel 8% acrylamide, transferred onto PVDF membrane for 60 minutes at 100V in 10% ethanol buffer. Anti-Ref2P antibody 1:500 incubated overnight at 4°C, with gentle agitation in TBS + 0.1% Tween-20.



All lanes : Anti-Ref2P antibody (ab178440) at 1/100 dilution (Milk blocked)

Lanes 1-3 : Atg8a mutant fruit flies (D.melanogaster)

Lanes 4-6 : Fruit flies (D.melanogaster) expressing ubiquitously Ref(2)p RNAi

Predicted band size: 65 kDa

Observed band size: 92 kDa [why is the actual band size different from the predicted?](#)

The bands observed at the bottom of the gel represent Tubulin and were used as a loading control within this experiment.

Please note: All products are "FOR RESEARCH USE ONLY. NOT FOR USE IN DIAGNOSTIC PROCEDURES"

Our Abpromise to you: Quality guaranteed and expert technical support

- Replacement or refund for products not performing as stated on the datasheet
- Valid for 12 months from date of delivery
- Response to your inquiry within 24 hours
- We provide support in Chinese, English, French, German, Japanese and Spanish
- Extensive multi-media technical resources to help you
- We investigate all quality concerns to ensure our products perform to the highest standards

If the product does not perform as described on this datasheet, we will offer a refund or replacement. For full details of the Abpromise, please visit <https://www.abcam.com/abpromise> or contact our technical team.

Terms and conditions

- Guarantee only valid for products bought direct from Abcam or one of our authorized distributors