




Product datasheet

Anti-REG1 alpha antibody ab231087

3 Images

Overview

Product name	Anti-REG1 alpha antibody
Description	Rabbit polyclonal to REG1 alpha
Host species	Rabbit
Tested applications	Suitable for: IHC-P, WB
Species reactivity	Reacts with: Rat Predicted to work with: Mouse 
Immunogen	Recombinant fragment corresponding to Mouse REG1 alpha aa 10-165. N-terminal His-tag and GST-tag. Expressed in E.coli. Sequence: LSCLVLSPSQGQEAEDLPSARISCPEGSNAYSSYCY YFTEDRLTWADA DLFCQNMNSGYLVSVLSQAEGNFVASLIKESGTTDAN VWTGLHDPKRNRR WHWSSGSLFLYKSWATGSPNSSNRGYCVSLTSNTGY KKWKDDNCDQYSF VCKFKG Database link: P43137  Run BLAST with  Run BLAST with
Positive control	WB: Recombinant mouse REG1 alpha; rat pancreas tissue lysate. IHC-P: Rat pancreas tissue.

Properties

Form	Liquid
Storage instructions	Shipped at 4°C. Store at +4°C short term (1-2 weeks). Upon delivery aliquot. Store at -20°C long term. Avoid freeze / thaw cycle.
Storage buffer	pH: 7.40 Preservative: 0.02% Sodium azide Constituents: PBS, 50% Glycerol
Purity	Immunogen affinity purified
Purification notes	Antigen-specific affinity chromatography followed by Protein A affinity chromatography
Clonality	Polyclonal

Isotype

IgG

Applications

Our [Abpromise guarantee](#) covers the use of **ab231087** in the following tested applications.

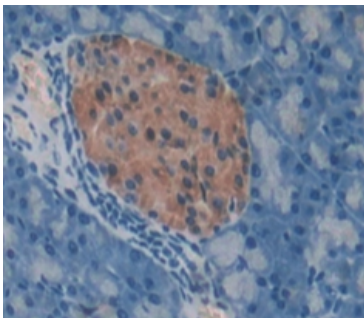
The application notes include recommended starting dilutions; optimal dilutions/concentrations should be determined by the end user.

Application	Abreviews	Notes
IHC-P		Use a concentration of 5 - 20 µg/ml.
WB		Use a concentration of 0.5 - 2 µg/ml. Predicted molecular weight: 19 kDa.

Target

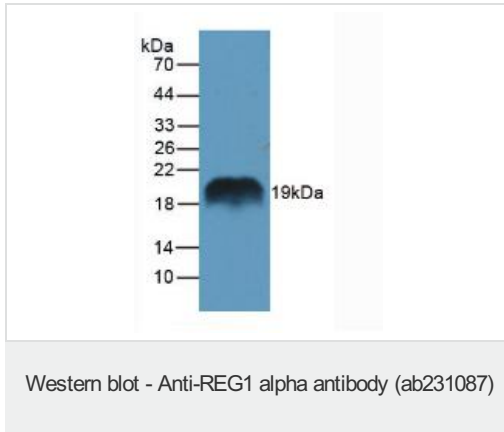
Function	Might act as an inhibitor of spontaneous calcium carbonate precipitation. May be associated with neuronal sprouting in brain, and with brain and pancreas regeneration.
Tissue specificity	In pancreatic acinar cells and, in lower levels, in brain. Enhanced expression of PSP-related transcripts and intraneuronal accumulation of PSP-like proteins is found in brain from Alzheimer disease and Down syndrome patients.
Sequence similarities	Contains 1 C-type lectin domain.
Developmental stage	High expression levels in fetal and infant brains; much lower in adult brains.
Post-translational modifications	The composition of the O-linked carbohydrate on Thr-27 is complex and varied. In the crystallographic structure, the attached sugar appears to be N-acetylglucosamine, typical of an intracellular protein, rather than N-acetylgalactosamine.
Cellular localization	Secreted.

Images



Formalin-fixed, paraffin-embedded rat pancreas tissue stained for REG1 alpha with ab231087 at 20 µg/ml in immunohistochemical analysis. DAB staining.

Immunohistochemistry (Formalin/PFA-fixed paraffin-embedded sections) - Anti-REG1 alpha antibody (ab231087)

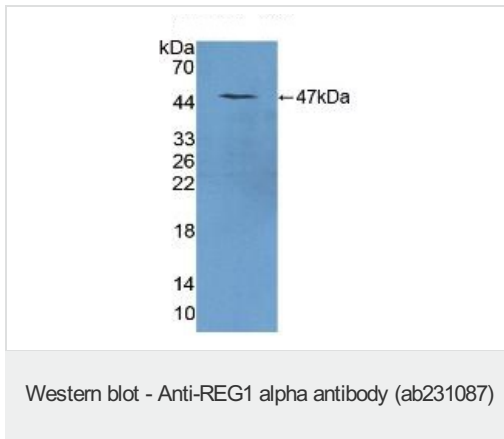


Anti-REG1 alpha antibody (ab231087) at 1 µg/ml + Rat pancreas tissue lysate

Secondary

HRP-Linked Guinea pig anti-Rabbit at 1/2000 dilution

Predicted band size: 19 kDa



Anti-REG1 alpha antibody (ab231087) at 2 µg/ml + Recombinant mouse REG1 alpha

Predicted band size: 19 kDa

Please note: All products are "FOR RESEARCH USE ONLY. NOT FOR USE IN DIAGNOSTIC PROCEDURES"

Our Abpromise to you: Quality guaranteed and expert technical support

- Replacement or refund for products not performing as stated on the datasheet
- Valid for 12 months from date of delivery
- Response to your inquiry within 24 hours
- We provide support in Chinese, English, French, German, Japanese and Spanish
- Extensive multi-media technical resources to help you
- We investigate all quality concerns to ensure our products perform to the highest standards

If the product does not perform as described on this datasheet, we will offer a refund or replacement. For full details of the Abpromise, please visit <https://www.abcam.com/abpromise> or contact our technical team.

Terms and conditions

- Guarantee only valid for products bought direct from Abcam or one of our authorized distributors