



## Product datasheet

# Anti-REG1 alpha antibody ab231092

3 Images

### Overview

<b>Product name</b>	Anti-REG1 alpha antibody
<b>Description</b>	Rabbit polyclonal to REG1 alpha
<b>Host species</b>	Rabbit
<b>Tested applications</b>	<b>Suitable for:</b> WB, IHC-P
<b>Species reactivity</b>	<b>Reacts with:</b> Mouse, Rat
<b>Immunogen</b>	<p>Recombinant full length protein (His-T7-tag) corresponding to Rat REG1 alpha aa 22-165. Full length mature chain, expressed in E.coli. N-terminal tags.</p> <p>Sequence:</p> <p>QEAEEDLPSARITCPEGSNAYSSYCYFMEDHLSWAEAD            LFCQNMNSGYL            VSVLSQAEGNFLASLIKESGTTAANVWIGLHDPKNNRRWH            WSSGSLFLYK            SWDTGYPNNSNRGYCVSVTSNSGYKKWRDNSCDAQLSF            VCKFKA</p> <p>Database link: <a href="#">P10758</a></p> <p style="text-align: right;">  <a href="#">Run BLAST with</a>                 <a href="#">Run BLAST with</a> </p>
<b>Positive control</b>	IHC-P: Rat intestine tissue. WB: Rat and mouse pancreas lysates; Recombinant rat REG1 alpha protein.
<b>General notes</b>	<p>Reproducibility is key to advancing scientific discovery and accelerating scientists' next breakthrough.</p> <p>Abcam is leading the way with our range of recombinant antibodies, knockout-validated antibodies and knockout cell lines, all of which support improved reproducibility.</p> <p>We are also planning to innovate the way in which we present recommended applications and species on our product datasheets, so that only applications &amp; species that have been tested in our own labs, our suppliers or by selected trusted collaborators are covered by our Abpromise™ guarantee.</p> <p>In preparation for this, we have started to update the applications &amp; species that this product is Abpromise guaranteed for.</p> <p>We are also updating the applications &amp; species that this product has been “predicted to work with,” however this information is not covered by our Abpromise guarantee.</p> <p>Applications &amp; species from publications and Abreviews that have not been tested in our own</p>

labs or in those of our suppliers are not covered by the Abpromise guarantee.

Please check that this product meets your needs before purchasing. If you have any questions, special requirements or concerns, please send us an inquiry and/or contact our Support team ahead of purchase. Recommended alternatives for this product can be found below, as well as customer reviews and Q&As.

## Properties

---

<b>Form</b>	Liquid
<b>Storage instructions</b>	Shipped at 4°C. Store at +4°C short term (1-2 weeks). Upon delivery aliquot. Store at -20°C long term. Avoid freeze / thaw cycle.
<b>Storage buffer</b>	pH: 7.40 Preservative: 0.02% Sodium azide Constituents: PBS, 50% Glycerol
<b>Purity</b>	Immunogen affinity purified
<b>Purification notes</b>	ab231092 was purified by antigen-specific affinity chromatography followed by Protein A affinity chromatography.
<b>Clonality</b>	Polyclonal
<b>Isotype</b>	IgG

## Applications

---

Our [Abpromise guarantee](#) covers the use of **ab231092** in the following tested applications.

The application notes include recommended starting dilutions; optimal dilutions/concentrations should be determined by the end user.

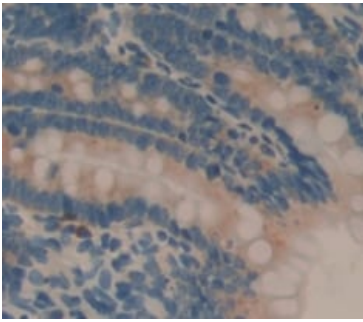
Application	Abreviews	Notes
WB		Use a concentration of 0.2 - 2 µg/ml. Predicted molecular weight: 19 kDa.
IHC-P		Use a concentration of 5 - 20 µg/ml.

## Target

---

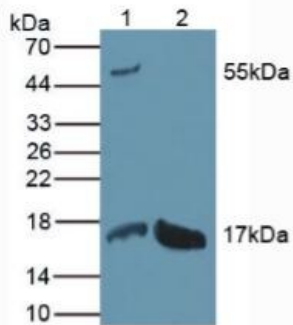
<b>Function</b>	Might act as an inhibitor of spontaneous calcium carbonate precipitation. May be associated with neuronal sprouting in brain, and with brain and pancreas regeneration.
<b>Tissue specificity</b>	In pancreatic acinar cells and, in lower levels, in brain. Enhanced expression of PSP-related transcripts and intraneuronal accumulation of PSP-like proteins is found in brain from Alzheimer disease and Down syndrome patients.
<b>Sequence similarities</b>	Contains 1 C-type lectin domain.
<b>Developmental stage</b>	High expression levels in fetal and infant brains; much lower in adult brains.
<b>Post-translational modifications</b>	The composition of the O-linked carbohydrate on Thr-27 is complex and varied. In the crystallographic structure, the attached sugar appears to be N-acetylglucosamine, typical of an intracellular protein, rather than N-acetylgalactosamine.
<b>Cellular localization</b>	Secreted.

## Images



Immunohistochemistry (Formalin/PFA-fixed paraffin-embedded sections) - Anti-REG1 alpha antibody (ab231092)

Formalin-fixed, paraffin-embedded rat intestine tissue stained for REG1 alpha using ab231092 at 20 µg/ml in immunohistochemical analysis, followed by DAB staining.



Western blot - Anti-REG1 alpha antibody (ab231092)

**All lanes :** Anti-REG1 alpha antibody (ab231092) at 2 µg/ml

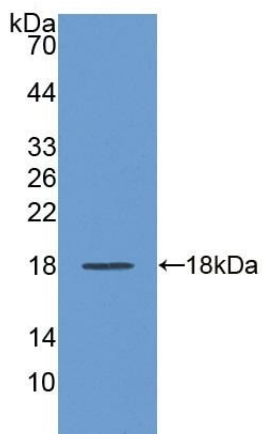
**Lane 1 :** Rat pancreas lysate

**Lane 2 :** Mouse pancreas lysate

**Secondary**

**All lanes :** HRP-Linked Guinea pig Anti-Rabbit antibody at 1/1000 dilution

**Predicted band size:** 19 kDa



Western blot - Anti-REG1 alpha antibody (ab231092)

Anti-REG1 alpha antibody (ab231092) at 2 µg/ml + Recombinant rat REG1 alpha protein

**Predicted band size:** 19 kDa

**Please note:** All products are "FOR RESEARCH USE ONLY. NOT FOR USE IN DIAGNOSTIC PROCEDURES"

## **Our Abpromise to you: Quality guaranteed and expert technical support**

---

- Replacement or refund for products not performing as stated on the datasheet
- Valid for 12 months from date of delivery
- Response to your inquiry within 24 hours
  
- We provide support in Chinese, English, French, German, Japanese and Spanish
- Extensive multi-media technical resources to help you
- We investigate all quality concerns to ensure our products perform to the highest standards

If the product does not perform as described on this datasheet, we will offer a refund or replacement. For full details of the Abpromise, please visit <https://www.abcam.com/abpromise> or contact our technical team.

## **Terms and conditions**

---

- Guarantee only valid for products bought direct from Abcam or one of our authorized distributors