

Product datasheet

Anti-Repetin antibody ab138060

1 Image

Overview

Product name	Anti-Repetin antibody
Description	Rabbit polyclonal to Repetin
Host species	Rabbit
Tested applications	Suitable for: WB
Species reactivity	Reacts with: Human
Immunogen	Synthetic peptide corresponding to a region C terminal amino acids of Human Repetin.
Positive control	HepG2 cell lysate
General notes	<p>The Life Science industry has been in the grips of a reproducibility crisis for a number of years. Abcam is leading the way in addressing this with our range of recombinant monoclonal antibodies and knockout edited cell lines for gold-standard validation. Please check that this product meets your needs before purchasing.</p> <p>If you have any questions, special requirements or concerns, please send us an inquiry and/or contact our Support team ahead of purchase. Recommended alternatives for this product can be found below, along with publications, customer reviews and Q&As</p>

Properties

Form	Liquid
Storage instructions	Shipped at 4°C. Store at -20°C.
Storage buffer	<p>pH: 7.40</p> <p>Preservative: 0.02% Sodium azide</p> <p>Constituents: 49% PBS, 50% Glycerol (glycerin, glycerine), 0.88% Sodium chloride</p> <p>without Mg²⁺ and Ca²⁺</p>
Purity	Immunogen affinity purified
Purification notes	ab138060 was affinity purified from rabbit antiserum by immunogenic peptide affinity chromatography.
Clonality	Polyclonal
Isotype	IgG

Applications

The Abpromise guarantee Our [Abpromise guarantee](#) covers the use of ab138060 in the following tested applications. The application notes include recommended starting dilutions; optimal dilutions/concentrations should be determined by the end user.

Application	Abreviews	Notes
WB		1/500 - 1/1000. Predicted molecular weight: 91 kDa.

Target

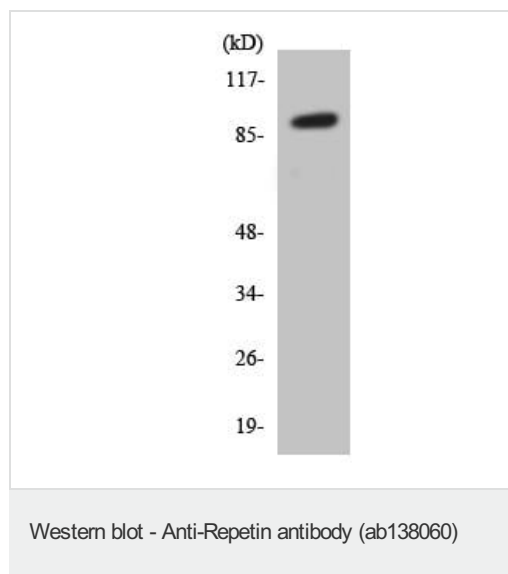
Relevance

Repetin is a multifunctional epidermal matrix protein involved in the cornified cell envelope formation. It reversibly binds calcium. Expression is scattered in the normal epidermis but strong in the acrosyngium, the inner hair root sheat and in the filiform papilli of the tongue.

Cellular localization

Secreted; extracellular space; extracellular matrix.

Images



Anti-Repetin antibody (ab138060) at 1/500 dilution + HepG2 cell lysate at 30 µg

Predicted band size: 91 kDa

Please note: All products are "FOR RESEARCH USE ONLY. NOT FOR USE IN DIAGNOSTIC PROCEDURES"

Our Abpromise to you: Quality guaranteed and expert technical support

- Replacement or refund for products not performing as stated on the datasheet
- Valid for 12 months from date of delivery
- Response to your inquiry within 24 hours
- We provide support in Chinese, English, French, German, Japanese and Spanish
- Extensive multi-media technical resources to help you
- We investigate all quality concerns to ensure our products perform to the highest standards

If the product does not perform as described on this datasheet, we will offer a refund or replacement. For full details of the Abpromise,

please visit <https://www.abcam.com/abpromise> or contact our technical team.

Terms and conditions

- Guarantee only valid for products bought direct from Abcam or one of our authorized distributors