




Product datasheet

Anti-REPS1 antibody ab204906

2 Images

Overview

Product name	Anti-REPS1 antibody
Description	Rabbit polyclonal to REPS1
Host species	Rabbit
Tested applications	Suitable for: ICC/IF, IHC-P
Species reactivity	Reacts with: Human Predicted to work with: Mouse 
Immunogen	Recombinant fragment corresponding to Human REPS1 aa 610-712. Sequence: LITHTSTSPQQIQPEQPNFADFSQFEVFAASNVNDEQDD EAEKHPEVLPAE KASDPASSLRVAKTDSKTEEKTAASAPANVSKGTTPL APPPKPVRRRLKS EDE Database link: Q96D71  Run BLAST with  Run BLAST with
Positive control	U-2 OS cells and human testis tissue.

Properties

Form	Liquid
Storage instructions	Shipped at 4°C. Store at +4°C short term (1-2 weeks). Upon delivery aliquot. Store at -20°C long term. Avoid freeze / thaw cycle.
Storage buffer	pH: 7.20 Preservative: 0.02% Sodium azide Constituents: PBS, 40% Glycerol
Purity	Immunogen affinity purified
Clonality	Polyclonal
Isotype	IgG

Applications

Our [Abpromise guarantee](#) covers the use of **ab204906** in the following tested applications.

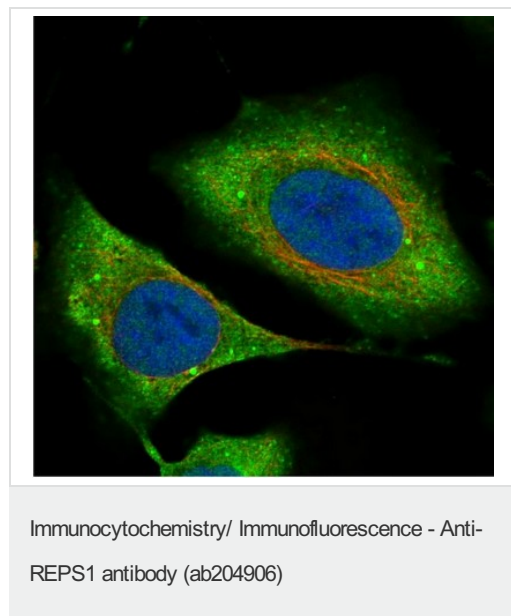
The application notes include recommended starting dilutions; optimal dilutions/concentrations should be determined by the end user.

Application	Abreviews	Notes
ICC/IF		Use a concentration of 1 - 4 µg/ml. Fixation/Permeabilization: PFA/Triton X-100
IHC-P		1/2500 - 1/5000. Perform heat mediated antigen retrieval with citrate buffer pH 6 before commencing with IHC staining protocol.

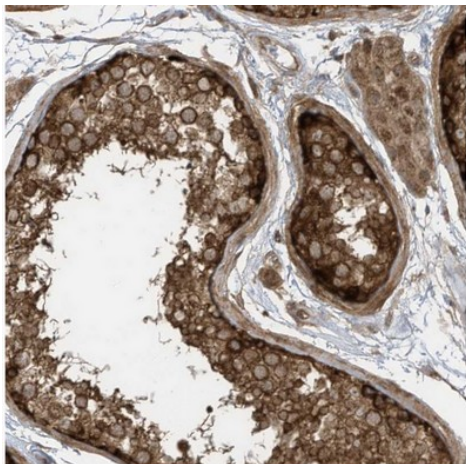
Target

Function	May coordinate the cellular actions of activated EGF receptors and Ral-GTPases.
Sequence similarities	Contains 1 EF-hand domain. Contains 2 EH domains.
Post-translational modifications	EGF stimulates phosphorylation on Tyr-residues.
Cellular localization	Membrane > clathrin-coated pit. Colocalize with ITSN1 at the plasma membrane in structures that are most probably clathrin-coated pits.

Images



Immunofluorescent analysis of U-2 OS cells labeling REPS1 with ab204906 at 4 µg/mL.



Immunohistochemical analysis of paraffin-embedded human testis tissue labeling REPS1 with ab204906 antibody at a dilution of 1/2500.

Immunohistochemistry (Formalin/PFA-fixed paraffin-embedded sections) - Anti-REPS1 antibody (ab204906)

Please note: All products are "FOR RESEARCH USE ONLY. NOT FOR USE IN DIAGNOSTIC PROCEDURES"

Our Abpromise to you: Quality guaranteed and expert technical support

- Replacement or refund for products not performing as stated on the datasheet
- Valid for 12 months from date of delivery
- Response to your inquiry within 24 hours
- We provide support in Chinese, English, French, German, Japanese and Spanish
- Extensive multi-media technical resources to help you
- We investigate all quality concerns to ensure our products perform to the highest standards

If the product does not perform as described on this datasheet, we will offer a refund or replacement. For full details of the Abpromise, please visit <https://www.abcam.com/abpromise> or contact our technical team.

Terms and conditions

- Guarantee only valid for products bought direct from Abcam or one of our authorized distributors