




Product datasheet

Biotin Anti-Resistin antibody ab271218

2 Images

Overview

Product name	Biotin Anti-Resistin antibody
Description	Biotin Rabbit polyclonal to Resistin
Host species	Rabbit
Conjugation	Biotin
Tested applications	Suitable for: WB, Sandwich ELISA
Species reactivity	Reacts with: Recombinant fragment Predicted to work with: Human 
Immunogen	Recombinant fragment corresponding to Human Resistin aa 17-108. Sequence: SSKTLCSMEE AINERIQEVA GSLIFRAISS IGLECSQSVTS RGLATCPRG FAVTGCTCGS ACGSWDVRAE TTCHCQCAGM DWTGARCCRV QP Database link: Q9HD89  Run BLAST with  Run BLAST with

General notes

Reproducibility is key to advancing scientific discovery and accelerating scientists' next breakthrough.

Abcam is leading the way with our range of recombinant antibodies, knockout-validated antibodies and knockout cell lines, all of which support improved reproducibility.

We are also planning to innovate the way in which we present recommended applications and species on our product datasheets, so that only applications & species that have been tested in our own labs, our suppliers or by selected trusted collaborators are covered by our Abpromise™ guarantee.

In preparation for this, we have started to update the applications & species that this product is Abpromise guaranteed for.

We are also updating the applications & species that this product has been “predicted to work with,” however this information is not covered by our Abpromise guarantee.

Applications & species from publications and Abreviews that have not been tested in our own labs or in those of our suppliers are not covered by the Abpromise guarantee.

Please check that this product meets your needs before purchasing. If you have any questions, special requirements or concerns, please send us an inquiry and/or contact our Support team ahead of purchase. Recommended alternatives for this product can be found below, as well as

customer reviews and Q&As.

Properties

Form	Lyophilized:Reconstitute in sterile PBS with 0.1% BSA to 0.1 - 1.0 mg/ml.
Storage instructions	Shipped at 4°C. Store at +4°C short term (1-2 weeks). Upon delivery aliquot. Store at -20°C long term. Avoid freeze / thaw cycle. Store In the Dark.
Storage buffer	Constituents: PBS, 0.1% BSA
Purity	Affinity purified
Clonality	Polyclonal
Isotype	IgG

Applications

Our [Abpromise guarantee](#) covers the use of **ab271218** in the following tested applications.

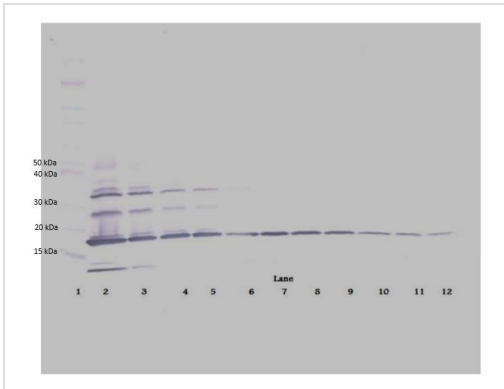
The application notes include recommended starting dilutions; optimal dilutions/concentrations should be determined by the end user.

Application	Abreviews	Notes
WB		Use a concentration of 0.1 - 0.2 µg/ml. Predicted molecular weight: 11 kDa.
Sandwich ELISA		Use at an assay dependent concentration.

Target

Function	Hormone that seems to suppress insulin ability to stimulate glucose uptake into adipose cells. Potentially links obesity to diabetes.
Tissue specificity	Expressed only in fatty tissues.
Sequence similarities	Belongs to the resistin/FIZZ family.
Cellular localization	Secreted.

Images



Western blot - Biotin Anti-Resistin antibody
(ab271218)

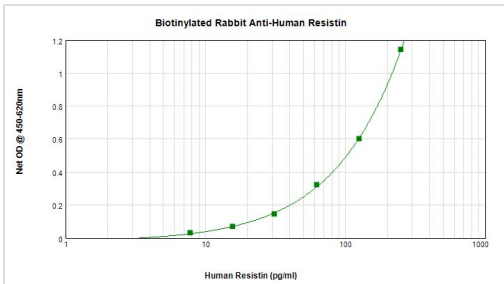
To detect Human Resistin Western Blot analysis this antibody can be used at a concentration of 0.1 - 0.2 µg/ml.

Used in conjunction with compatible secondary reagents the detection limit for Recombinant Human Resistin is 1.5 - 3.0 ng/lane, under either reducing or non-reducing conditions.

Lane 1: Marker

Lanes 2-12: 250, 125, 62.5, 31.25, 15.625, 7.8, 3.9, 1.95, 0.975, 0.4875 and 0.24 ng recombinant human Resistin, respectively.

Non-reducing conditions.



Sandwich ELISA - Biotin Anti-Resistin antibody
(ab271218)

Human resistin was detected by sandwich ELISA (using 100µl/well) using a concentration of 0.25-1.0 µg/ml of ab271218.

This antibody in conjunction with an appropriate capture antibody, allows the detection of at least 0.2-0.4 ng/well of recombinant human resistin protein.

Please note: All products are "FOR RESEARCH USE ONLY. NOT FOR USE IN DIAGNOSTIC PROCEDURES"

Our Abpromise to you: Quality guaranteed and expert technical support

- Replacement or refund for products not performing as stated on the datasheet
- Valid for 12 months from date of delivery
- Response to your inquiry within 24 hours
- We provide support in Chinese, English, French, German, Japanese and Spanish
- Extensive multi-media technical resources to help you
- We investigate all quality concerns to ensure our products perform to the highest standards

If the product does not perform as described on this datasheet, we will offer a refund or replacement. For full details of the Abpromise, please visit <https://www.abcam.com/abpromise> or contact our technical team.

Terms and conditions

- Guarantee only valid for products bought direct from Abcam or one of our authorized distributors