




Product datasheet

Anti-Reticulocalbin 3 antibody ab204178

3 Images

Overview

Product name	Anti-Reticulocalbin 3 antibody
Description	Rabbit polyclonal to Reticulocalbin 3
Host species	Rabbit
Tested applications	Suitable for: ICC/IF, IHC-P, WB
Species reactivity	Reacts with: Human Predicted to work with: Mouse, Rat, Cow 
Immunogen	Recombinant fragment corresponding to Human Reticulocalbin 3 aa 196-255. Sequence: EFPHMRDVAETLEDLDRNKDGYVQVEEYADLYSAEP GEEPAWVQTE RQQFRDFRDL Database link: Q96D15  Run BLAST with  Run BLAST with
Positive control	Human cerebral cortex tissue; RT-4 and U-251 MG cell lysates; U-2 OS cells.

Properties

Form	Liquid
Storage instructions	Shipped at 4°C. Store at +4°C short term (1-2 weeks). Upon delivery aliquot. Store at -20°C long term. Avoid freeze / thaw cycle.
Storage buffer	pH: 7.2 Preservative: 0.02% Sodium azide Constituents: 40% Glycerol, 59% PBS
Purity	Immunogen affinity purified
Clonality	Polyclonal
Isotype	IgG

Applications

Our [Abpromise guarantee](#) covers the use of **ab204178** in the following tested applications.

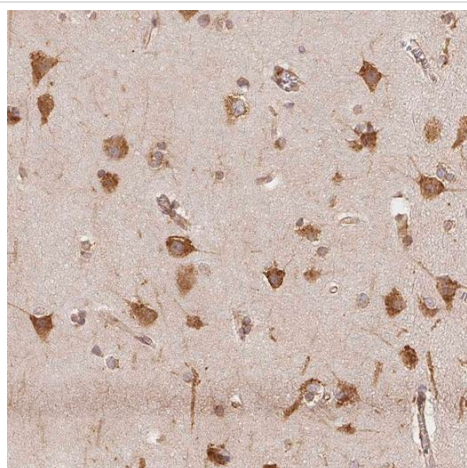
The application notes include recommended starting dilutions; optimal dilutions/concentrations should be determined by the end user.

Application	Abreviews	Notes
ICC/IF		Use a concentration of 1 - 4 µg/ml. Fixation/Permeabilization: PFA/Triton X-100.
IHC-P		1/2500 - 1/5000. Perform heat mediated antigen retrieval with citrate buffer pH 6 before commencing with IHC staining protocol.
WB		1/500 - 1/1000. Predicted molecular weight: 37 kDa.

Target

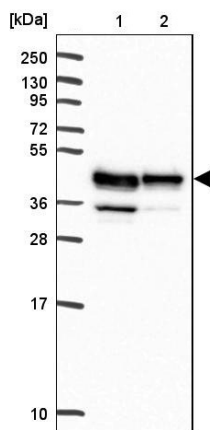
Sequence similarities	Belongs to the CREC family. Contains 6 EF-hand domains.
Cellular localization	Endoplasmic reticulum lumen.

Images



Immunohistochemical analysis of paraffin-embedded Human cerebral cortex tissue labeling Reticulocalbin 3 with ab204178 at 1/2500 dilution.

Immunohistochemistry (Formalin/PFA-fixed paraffin-embedded sections) - Anti-Reticulocalbin 3 antibody (ab204178)



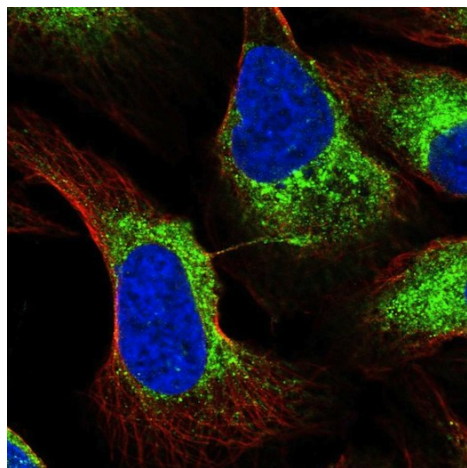
Western blot - Anti-Reticulocalbin 3 antibody (ab204178)

All lanes : Anti-Reticulocalbin 3 antibody (ab204178) at 1/500 dilution

Lane 1 : RT-4 cell lysate

Lane 2 : U-251 MG cell lysate

Predicted band size: 37 kDa



Immunocytochemistry/ Immunofluorescence - Anti-Reticulocalbin 3 antibody (ab204178)

Immunofluorescent analysis of PFA-fixed, Triton X-100 permeabilized U-2 OS cells labeling Reticulocalbin 3 with ab204178 at 4 µg/ml (green).

Please note: All products are "FOR RESEARCH USE ONLY. NOT FOR USE IN DIAGNOSTIC PROCEDURES"

Our Abpromise to you: Quality guaranteed and expert technical support

- Replacement or refund for products not performing as stated on the datasheet

- Valid for 12 months from date of delivery
- Response to your inquiry within 24 hours

- We provide support in Chinese, English, French, German, Japanese and Spanish
- Extensive multi-media technical resources to help you
- We investigate all quality concerns to ensure our products perform to the highest standards

If the product does not perform as described on this datasheet, we will offer a refund or replacement. For full details of the Abpromise, please visit <https://www.abcam.com/abpromise> or contact our technical team.

Terms and conditions

- Guarantee only valid for products bought direct from Abcam or one of our authorized distributors