




Product datasheet

Anti-Retinoblastoma binding protein 6 antibody ab217283

2 Images

Overview

Product name	Anti-Retinoblastoma binding protein 6 antibody
Description	Rabbit polyclonal to Retinoblastoma binding protein 6
Host species	Rabbit
Tested applications	Suitable for: IHC-P
Species reactivity	Reacts with: Rat Predicted to work with: Mouse, Human 
Immunogen	Synthetic peptide within Human Retinoblastoma binding protein 6 aa 1-40 conjugated to keyhole limpet haemocyanin. The exact sequence is proprietary. Sequence: MSCVHYKFSSKLNVDTVFDGLHISLCDLKKQIMGREK LK Database link: Q7Z6E9  Run BLAST with  Run BLAST with
Positive control	Rat kidney and testis tissues.

Properties

Form	Liquid
Storage instructions	Shipped at 4°C. Store at +4°C short term (1-2 weeks). Upon delivery aliquot. Store at -20°C long term. Avoid freeze / thaw cycle.
Storage buffer	Preservative: 0.09% Sodium azide Constituents: 1% BSA, 50% Glycerol
Purity	Protein A purified
Clonality	Polyclonal
Isotype	IgG

Applications

Our [Abpromise guarantee](#) covers the use of **ab217283** in the following tested applications.

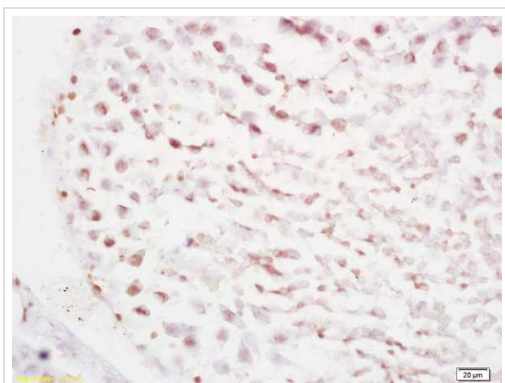
The application notes include recommended starting dilutions; optimal dilutions/concentrations should be determined by the end user.

Application	Abreviews	Notes
IHC-P		1/100 - 1/500.

Target

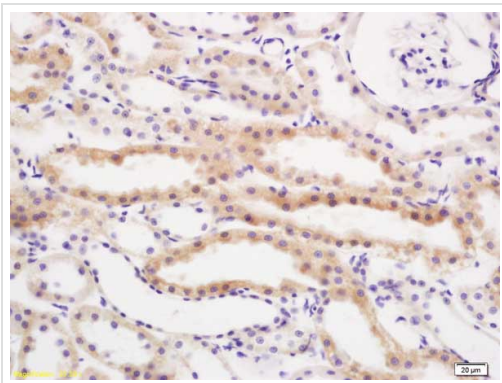
Function	E3 ubiquitin-protein ligase which promotes ubiquitination of YBX1, leading to its degradation by the proteasome. May play a role as a scaffold protein to promote the assembly of the p53/TP53-MDM2 complex, resulting in increase of MDM2-mediated ubiquitination and degradation of p53/TP53; may function as negative regulator of p53/TP53, leading to both apoptosis and cell growth.
Tissue specificity	Highly expressed in the placenta and testis. Expressed at lower levels in the brain, heart, kidney, liver and lung. Overexpressed in esophageal cancer.
Pathway	Protein modification; protein ubiquitination.
Sequence similarities	Contains 1 CCHC-type zinc finger. Contains 1 DWNN domain. Contains 1 RING-type zinc finger.
Post-translational modifications	Phosphorylated upon DNA damage, probably by ATM or ATR. Phosphorylated by NEK6.
Cellular localization	Nucleus > nucleolus. Chromosome. Cytoplasm > cytoskeleton > centrosome. Colocalizes with mitotic chromosomes. Co-localizes with NEK6 in the centrosome.

Images



Immunohistochemical analysis of formalin-fixed, paraffin-embedded rat testis tissue labeling Retinoblastoma binding protein 6 with ab217283 at 1/200 dilution, followed by conjugation to the secondary antibody and DAB staining.

Immunohistochemistry (Formalin/PFA-fixed paraffin-embedded sections) - Anti-Retinoblastoma binding protein 6 antibody (ab217283)



Immunohistochemical analysis of formalin-fixed, paraffin-embedded rat kidney tissue labeling Retinoblastoma binding protein 6 with ab217283 at 1/200 dilution, followed by conjugation to the secondary antibody and DAB staining.

Immunohistochemistry (Formalin/PFA-fixed paraffin-embedded sections) - Anti-Retinoblastoma binding protein 6 antibody (ab217283)

Please note: All products are "FOR RESEARCH USE ONLY. NOT FOR USE IN DIAGNOSTIC PROCEDURES"

Our Abpromise to you: Quality guaranteed and expert technical support

- Replacement or refund for products not performing as stated on the datasheet
- Valid for 12 months from date of delivery
- Response to your inquiry within 24 hours

- We provide support in Chinese, English, French, German, Japanese and Spanish
- Extensive multi-media technical resources to help you
- We investigate all quality concerns to ensure our products perform to the highest standards

If the product does not perform as described on this datasheet, we will offer a refund or replacement. For full details of the Abpromise, please visit <https://www.abcam.com/abpromise> or contact our technical team.

Terms and conditions

- Guarantee only valid for products bought direct from Abcam or one of our authorized distributors