


## Product datasheet

# Anti-RFC1 antibody ab3853

3 References 1 Image

### Overview

<b>Product name</b>	Anti-RFC1 antibody
<b>Description</b>	Rabbit polyclonal to RFC1
<b>Host species</b>	Rabbit
<b>Tested applications</b>	<b>Suitable for:</b> IP, WB
<b>Species reactivity</b>	<b>Reacts with:</b> Human <b>Predicted to work with:</b> Mouse, Chimpanzee, Gorilla 
<b>Immunogen</b>	Synthetic peptide (Human) - which represents a portion of human Replication Factor C 1, 140 kDa subunit encoded in part by exons 25 and 26.
<b>Positive control</b>	Nuclear extract from HeLa cells.

### Properties

<b>Form</b>	Liquid
<b>Storage instructions</b>	Shipped at 4°C. Upon delivery aliquot and store at -20°C. Avoid freeze / thaw cycles.
<b>Storage buffer</b>	Preservative: 0.1% Sodium azide Constituents: 0.021% PBS, 1.764% Sodium citrate, 1.815% Tris
<b>Purity</b>	Immunogen affinity purified
<b>Clonality</b>	Polyclonal
<b>Isotype</b>	IgG

### Applications

Our [Abpromise guarantee](#) covers the use of **ab3853** in the following tested applications.

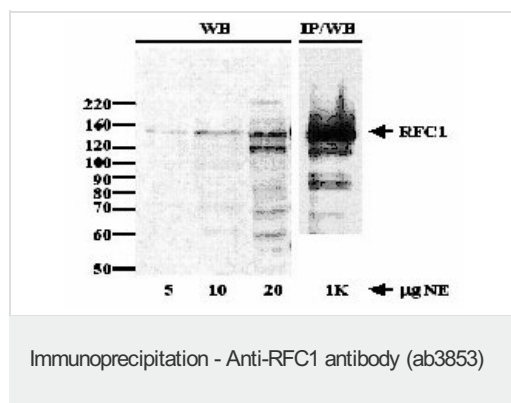
The application notes include recommended starting dilutions; optimal dilutions/concentrations should be determined by the end user.

Application	Abreviews	Notes
IP		Use at 2 µg/mg of lysate.
WB		1/1000 - 1/10000. Detects a band of approximately 140 kDa (predicted molecular weight: 128 kDa).

## Target

<b>Function</b>	The elongation of primed DNA templates by DNA polymerase delta and epsilon requires the action of the accessory proteins PCNA and activator 1. This subunit binds to the primer-template junction. Binds the PO-B transcription element as well as other GA rich DNA sequences. Could play a role in DNA transcription regulation as well as DNA replication and/or repair. Can bind single- or double-stranded DNA. Interacts with C-terminus of PCNA. 5' phosphate residue is required for binding of the N-terminal DNA-binding domain to duplex DNA, suggesting a role in recognition of non-primer template DNA structures during replication and/or repair.
<b>Tissue specificity</b>	Wide tissue distribution. Undetectable in placental tissue.
<b>Sequence similarities</b>	Belongs to the activator 1 large subunit family. Contains 1 BRCT domain.
<b>Post-translational modifications</b>	Phosphorylated upon DNA damage, probably by ATM or ATR.
<b>Cellular localization</b>	Nucleus.

## Images



Detection of Human RFC 1 by Western Blot and Immunoprecipitation using Affinity Purified Rabbit anti-RFC 1 (ab3853)

Sample: Nuclear Extract (NE, amounts used are indicated) from HeLa cells.

Antibody: Affinity Purified Rb anti-RFC 1 (ab3853).

WB - 0.5µg/ml, IP - 2µg/mg NE.

Detection: ECL, 30 seconds

**Please note:** All products are "FOR RESEARCH USE ONLY AND ARE NOT INTENDED FOR DIAGNOSTIC OR THERAPEUTIC USE"

## Our Abpromise to you: Quality guaranteed and expert technical support

- Replacement or refund for products not performing as stated on the datasheet
- Valid for 12 months from date of delivery
- Response to your inquiry within 24 hours
- We provide support in Chinese, English, French, German, Japanese and Spanish
- Extensive multi-media technical resources to help you
- We investigate all quality concerns to ensure our products perform to the highest standards

If the product does not perform as described on this datasheet, we will offer a refund or replacement. For full details of the Abpromise, please visit <https://www.abcam.com/abpromise> or contact our technical team.

## Terms and conditions

---

- Guarantee only valid for products bought direct from Abcam or one of our authorized distributors