

Product datasheet

Anti-RFP antibody ab152123

1 References 3 Images

Overview

Product name	Anti-RFP antibody
Description	Rabbit polyclonal to RFP
Host species	Rabbit
Tested applications	Suitable for: WB, IP, ICC/IF
Immunogen	Recombinant full length RFP.
Positive control	RFP-transfected HeLa cells; RFP-transfected 293T lysate.

Properties

Form	Liquid
Storage instructions	Shipped at 4°C. Upon delivery aliquot. Store at -20°C or -80°C. Avoid freeze / thaw cycle.
Storage buffer	Preservative: 0.01% Thimerosal (merthiolate) Constituents: 20% Glycerol, 1.21% Tris, 0.75% Glycine
Purity	Immunogen affinity purified
Clonality	Polyclonal
Isotype	IgG

Applications

Our [Abpromise guarantee](#) covers the use of **ab152123** in the following tested applications.

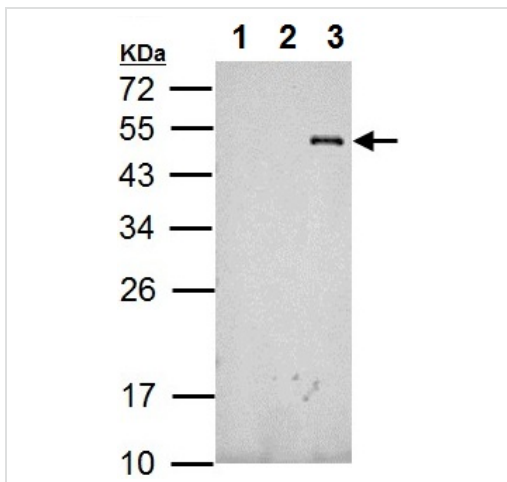
The application notes include recommended starting dilutions; optimal dilutions/concentrations should be determined by the end user.

Application	Abreviews	Notes
WB		1/5000 - 1/20000. Predicted molecular weight: 27 kDa.
IP		1/10000.
ICC/IF		1/5000.

Relevance

Fluorescent proteins have become a useful and ubiquitous tool for making chimeric proteins, where they function as a fluorescent protein tag. Typically they tolerate N- and C-terminal fusion to a broad variety of proteins. They have been expressed in most known cell types and are used as a noninvasive fluorescent marker in living cells and organisms. They enable a wide range of applications where they have functioned as a cell lineage tracer, reporter of gene expression, or as a measure of protein-protein interactions.

Images



Western blot - Anti-RFP antibody (ab152123)

All lanes : Anti-RFP antibody (ab152123) at 1/10000 dilution

Lane 1 : Non-transfected 293T whole cell lysate

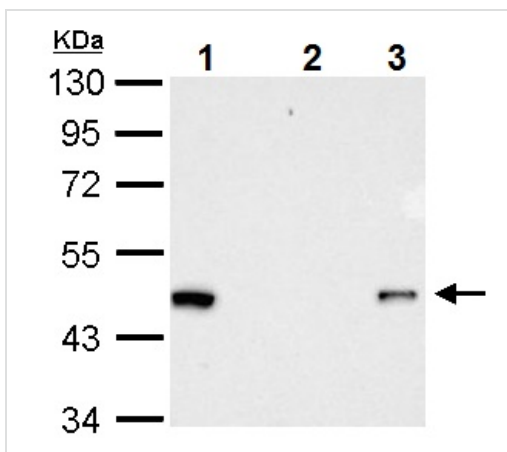
Lane 2 : GFP-transfected 293T whole cell lysate

Lane 3 : RFP-transfected 293T whole cell lysate

Lysates/proteins at 5 µg per lane.

Predicted band size: 27 kDa

12% SDS PAGE



Immunoprecipitation - Anti-RFP antibody (ab152123)

Immunoprecipitation of RFP-tagged protein.

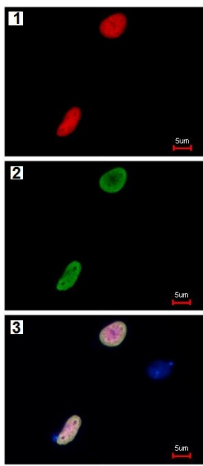
HeLa transfected lysates were subjected to immunoprecipitation using:

Lane 1: 15 µg of HeLa transfected lysate

Lane 2: normal rabbit IgG

Lane 3: 2.5 µg ab152123

Detection ab152123 at 1/10000 dilution



Immunofluorescence analysis of RFP-transfected HeLa cells labeling RFP with ab152123: (1) RFP is expressed in the transfected cell, (2) The cell expressing RFP is detected using ab152123 at 1/5000 followed by Alexa Fluor 488 at 1/500 Goat anti-Rabbit IgG, (3) Merged with DNA probe, the lower cell represents a negative control.

Immunocytochemistry/ Immunofluorescence - Anti-RFP antibody (ab152123)

Please note: All products are "FOR RESEARCH USE ONLY AND ARE NOT INTENDED FOR DIAGNOSTIC OR THERAPEUTIC USE"

Our Abpromise to you: Quality guaranteed and expert technical support

- Replacement or refund for products not performing as stated on the datasheet
- Valid for 12 months from date of delivery
- Response to your inquiry within 24 hours
- We provide support in Chinese, English, French, German, Japanese and Spanish
- Extensive multi-media technical resources to help you
- We investigate all quality concerns to ensure our products perform to the highest standards

If the product does not perform as described on this datasheet, we will offer a refund or replacement. For full details of the Abpromise, please visit <https://www.abcam.com/abpromise> or contact our technical team.

Terms and conditions

- Guarantee only valid for products bought direct from Abcam or one of our authorized distributors