

## Product datasheet

# Anti-RFP antibody (FITC) ab34764

★★★★★ 1 Abreviews 4 References 1 Image

### Overview

|                            |                                                                                                                                                                                                             |
|----------------------------|-------------------------------------------------------------------------------------------------------------------------------------------------------------------------------------------------------------|
| <b>Product name</b>        | Anti-RFP antibody (FITC)                                                                                                                                                                                    |
| <b>Description</b>         | Rabbit polyclonal to RFP (FITC)                                                                                                                                                                             |
| <b>Host species</b>        | Rabbit                                                                                                                                                                                                      |
| <b>Conjugation</b>         | FITC. Ex: 493nm, Em: 528nm                                                                                                                                                                                  |
| <b>Specificity</b>         | ab34764 detects RFP tagged proteins. No reaction was observed against serum proteins. Expect reactivity against RFP and its variants: mCherry, tdTomato, mBanana, mOrange, mPlum, mOrange and mStrawberry". |
| <b>Tested applications</b> | <b>Suitable for:</b> Flow Cyt, ICC/IF, WB, ELISA                                                                                                                                                            |
| <b>Immunogen</b>           | Fusion protein corresponding to RFP. derived from the mushroom polyp coral Discosoma                                                                                                                        |
| <b>General notes</b>       | 3.4 moles FITC per mole of rabbit IgG.                                                                                                                                                                      |

### Properties

|                             |                                                                                                            |
|-----------------------------|------------------------------------------------------------------------------------------------------------|
| <b>Form</b>                 | Liquid                                                                                                     |
| <b>Storage instructions</b> | Shipped at 4°C. Store at +4°C.                                                                             |
| <b>Storage buffer</b>       | Preservative: 0.01% Sodium azide<br>Constituents: 1% BSA, 0.42% Potassium phosphate, 0.87% Sodium chloride |
| <b>Purity</b>               | Immunogen affinity purified                                                                                |
| <b>Purification notes</b>   | affinity purification was followed by solid phase adsorption to remove any unwanted reactivities.          |
| <b>Clonality</b>            | Polyclonal                                                                                                 |
| <b>Isotype</b>              | IgG                                                                                                        |

### Applications

Our [Abpromise guarantee](#) covers the use of **ab34764** in the following tested applications.

The application notes include recommended starting dilutions; optimal dilutions/concentrations should be determined by the end user.

| Application | Abreviews | Notes |
|-------------|-----------|-------|
|             |           |       |

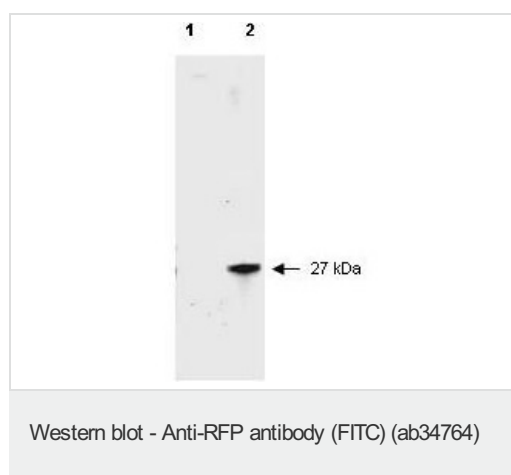
| Application | Abreviews | Notes                                                                                                                             |
|-------------|-----------|-----------------------------------------------------------------------------------------------------------------------------------|
| Flow Cyt    |           | 1/500 - 1/2500.<br><a href="#">ab37406</a> - Rabbit polyclonal IgG, is suitable for use as an isotype control with this antibody. |
| ICC/IF      | ★★★★★     | 1/500 - 1/2500.                                                                                                                   |
| WB          |           | 1/10000. Detects a band of approximately 27 kDa.                                                                                  |
| ELISA       |           | Use at an assay dependent concentration.                                                                                          |

## Target

### Relevance

Fluorescent proteins have become a useful and ubiquitous tool for making chimeric proteins, where they function as a fluorescent protein tag. Typically they tolerate N- and C-terminal fusion to a broad variety of proteins. They have been expressed in most known cell types and are used as a noninvasive fluorescent marker in living cells and organisms. They enable a wide range of applications where they have functioned as a cell lineage tracer, reporter of gene expression, or as a measure of protein-protein interactions.

## Images



**All lanes** : Anti-RFP antibody (FITC) (ab34764) at 1/2500 dilution

**Lane 1** : HeLa cell extract

**Lane 2** : HeLa lysate

Lysates/proteins at 10 µg per lane.

### Secondary

**All lanes** : Goat-a-Rabbit IgG [H&L] at 1/5000 dilution

**Please note:** All products are "FOR RESEARCH USE ONLY AND ARE NOT INTENDED FOR DIAGNOSTIC OR THERAPEUTIC USE"

## Our Abpromise to you: Quality guaranteed and expert technical support

- Replacement or refund for products not performing as stated on the datasheet
- Valid for 12 months from date of delivery
- Response to your inquiry within 24 hours
- We provide support in Chinese, English, French, German, Japanese and Spanish
- Extensive multi-media technical resources to help you
- We investigate all quality concerns to ensure our products perform to the highest standards

If the product does not perform as described on this datasheet, we will offer a refund or replacement. For full details of the Abpromise, please visit <https://www.abcam.com/abpromise> or contact our technical team.

## Terms and conditions

---

- Guarantee only valid for products bought direct from Abcam or one of our authorized distributors