

Product datasheet

Anti-RFP antibody (HRP) ab34767

★★★★☆ 3 Abreviews 4 References 1 Image

Overview

Product name	Anti-RFP antibody (HRP)
Description	Rabbit polyclonal to RFP (HRP)
Host species	Rabbit
Conjugation	HRP
Specificity	ab34767 is designed to detect RFP and its variants.
Tested applications	Suitable for: ELISA, WB
Immunogen	Fusion protein The immunogen is a Red Fluorescent Protein (RFP) fusion protein corresponding to the full length amino acid sequence (234aa) derived from the mushroom polyp coral <i>Discosoma</i> .

Properties

Form	Liquid
Storage instructions	Shipped at 4°C. Store at +4°C.
Storage buffer	pH: 7.20 Preservative: 0.01% Gentamicin sulphate Constituents: 1% BSA, 0.42% Potassium phosphate, 0.87% Sodium chloride
Purity	Immunogen affinity purified
Purification notes	immunoaffinity chromatography was followed by solid phase adsorption to remove any unwanted reactivities.
Clonality	Polyclonal
Isotype	IgG

Applications

Our [Abpromise guarantee](#) covers the use of **ab34767** in the following tested applications.

The application notes include recommended starting dilutions; optimal dilutions/concentrations should be determined by the end user.

Application	Abreviews	Notes
ELISA		1/10000 - 1/50000.

Application	Abreviews	Notes
-------------	-----------	-------

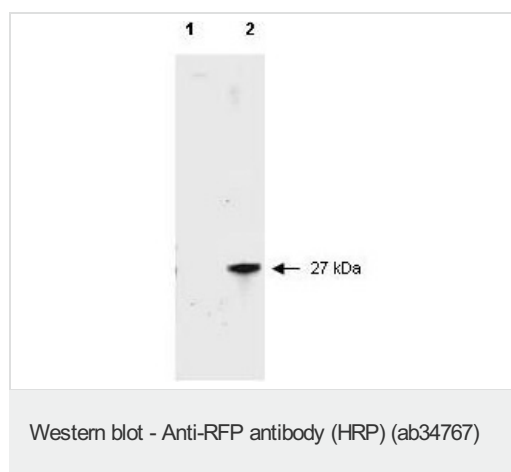
WB ★★★★★ 1/1000 - 1/5000. Detects a band of approximately 27 kDa.

Target

Relevance

Fluorescent proteins have become a useful and ubiquitous tool for making chimeric proteins, where they function as a fluorescent protein tag. Typically they tolerate N- and C-terminal fusion to a broad variety of proteins. They have been expressed in most known cell types and are used as a noninvasive fluorescent marker in living cells and organisms. They enable a wide range of applications where they have functioned as a cell lineage tracer, reporter of gene expression, or as a measure of protein-protein interactions.

Images



All lanes : Anti-RFP antibody (HRP) (ab34767) at 1/2500 dilution

Lane 1 : HeLa cell extract

Lane 2 : HeLa lysate

Lysates/proteins at 10 µg per lane.

Secondary

All lanes : Goat-a-Rabbit IgG [H&L] at 1/5000 dilution

Please note: All products are "FOR RESEARCH USE ONLY AND ARE NOT INTENDED FOR DIAGNOSTIC OR THERAPEUTIC USE"

Our Abpromise to you: Quality guaranteed and expert technical support

- Replacement or refund for products not performing as stated on the datasheet
- Valid for 12 months from date of delivery
- Response to your inquiry within 24 hours
- We provide support in Chinese, English, French, German, Japanese and Spanish
- Extensive multi-media technical resources to help you
- We investigate all quality concerns to ensure our products perform to the highest standards

If the product does not perform as described on this datasheet, we will offer a refund or replacement. For full details of the Abpromise, please visit <https://www.abcam.com/abpromise> or contact our technical team.

Terms and conditions

- Guarantee only valid for products bought direct from Abcam or one of our authorized distributors