



## Product datasheet

# Anti-RFXANK antibody [OTI3E7] ab236408

11 Images

### Overview

<b>Product name</b>	Anti-RFXANK antibody [OTI3E7]
<b>Description</b>	Mouse monoclonal [OTI3E7] to RFXANK
<b>Host species</b>	Mouse
<b>Tested applications</b>	<b>Suitable for:</b> WB, ICC/IF, Flow Cyt, IHC-P
<b>Species reactivity</b>	<b>Reacts with:</b> Human
<b>Immunogen</b>	<p>Recombinant full length protein corresponding to Human RFXANK aa 1-237. Produced in HEK293T cells.</p> <p>Sequence:</p> <p>MELTQPAEDLIQTQQTPASELGDPEDPGEEAADGSDTV            LSLFPCTPEPV            NPEPDASVSSPQGSSSLKHSTLTNRQRGNEVSALPATLD            CDNLVNKPDER            GFTPLIWASAFGEIETVRFLEWGADPHILAKERESALS            STGGYTDIV            GLLLERDVDINIYDWNGGTPLL YAVRGNHVKCV EALLARG            ADLTTEADSG            YTPMDLAVALGYRKVQQVIENHILKLFQSNLVPADPE</p> <p>Database link: <a href="#">NP_604389</a></p> <p style="text-align: right;">  <a href="#">Run BLAST with</a>  <a href="#">Run BLAST with</a> </p>
<b>Positive control</b>	<p>WB: pCMV6-ENTRY RFXANK cDNA transfected HEK-293T cell lysate. IHC-P: Human kidney, kidney carcinoma, ovary adenocarcinoma, pancreas, endometrium adenocarcinoma, bladder carcinoma and tonsil tissues. ICC/IF: COS-7 cells transiently transfected by pCMV6-ENTRY RFXANK. Flow Cyt: HeLa and Jurkat cells.</p>
<b>General notes</b>	<p>Clone OTI3E7 (formerly 3E7).</p> <p>Reproducibility is key to advancing scientific discovery and accelerating scientists' next breakthrough.</p> <p>Abcam is leading the way with our range of recombinant antibodies, knockout-validated antibodies and knockout cell lines, all of which support improved reproducibility.</p> <p>We are also planning to innovate the way in which we present recommended applications and species on our product datasheets, so that only applications &amp; species that have been tested in our own labs, our suppliers or by selected trusted collaborators are covered by our Abpromise™ guarantee.</p>

In preparation for this, we have started to update the applications & species that this product is Abpromise guaranteed for.

We are also updating the applications & species that this product has been “predicted to work with,” however this information is not covered by our Abpromise guarantee.

Applications & species from publications and Abreviews that have not been tested in our own labs or in those of our suppliers are not covered by the Abpromise guarantee.

Please check that this product meets your needs before purchasing. If you have any questions, special requirements or concerns, please send us an inquiry and/or contact our Support team ahead of purchase. Recommended alternatives for this product can be found below, as well as customer reviews and Q&As.

## Properties

<b>Form</b>	Liquid
<b>Storage instructions</b>	Shipped at 4°C. Store at +4°C short term (1-2 weeks). Upon delivery aliquot. Store at -20°C long term. Avoid freeze / thaw cycle.
<b>Storage buffer</b>	pH: 7.30 Preservative: 0.02% Sodium azide Constituents: PBS, 1% BSA, 50% Glycerol
<b>Purity</b>	Affinity purified
<b>Purification notes</b>	Purified from cell culture supernatant.
<b>Clonality</b>	Monoclonal
<b>Clone number</b>	OT13E7
<b>Isotype</b>	IgG2b

## Applications

Our [Abpromise guarantee](#) covers the use of **ab236408** in the following tested applications.

The application notes include recommended starting dilutions; optimal dilutions/concentrations should be determined by the end user.

Application	Abreviews	Notes
WB		1/2000. Predicted molecular weight: 24, 28 kDa.
ICC/IF		1/100.
Flow Cyt		1/100.
IHC-P		1/150. Perform heat mediated antigen retrieval with citrate buffer pH 6 before commencing with IHC staining protocol.

## Target

<b>Function</b>	Activates transcription from class II MHC promoters. Activation requires the activity of the MHC class II transactivator (MHC2TA). May regulate other genes in the cell. RFX binds the X1 box of
-----------------	--

MHC-II promoters. Isoform RFX-B-delta5 is not involved in the positive regulation of MHC class II genes.

**Tissue specificity**

Ubiquitous.

**Involvement in disease**

Defects in RFXANK are a cause of bare lymphocyte syndrome type 2 (BLS2) [MIM:209920]; also known as hereditary MHC class II deficiency or HLA class II-deficient combined immunodeficiency. BLS2 is a severe combined immunodeficiency disease with early onset. It is characterized by a profound defect in constitutive and interferon-gamma induced MHC II expression, absence of cellular and humoral T-cell response to antigen challenge, hypogammaglobulinemia and impaired antibody production. The consequence include extreme susceptibility to viral, bacterial and fungal infections.

**Sequence similarities**

Contains 5 ANK repeats.

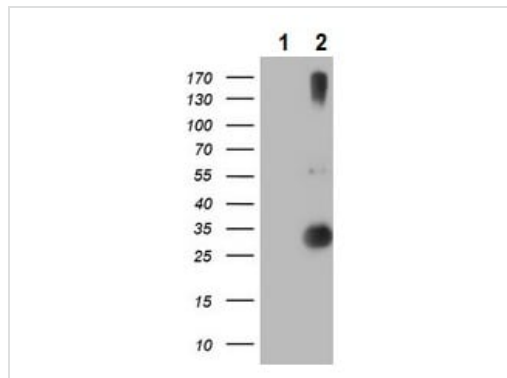
**Domain**

The third ankyrin repeat is required for association with the two other RFX subunits; RFX5 and RFXAP.

**Cellular localization**

Nucleus.

**Images**



Western blot - Anti-RFXANK antibody [OTI3E7] (ab236408)

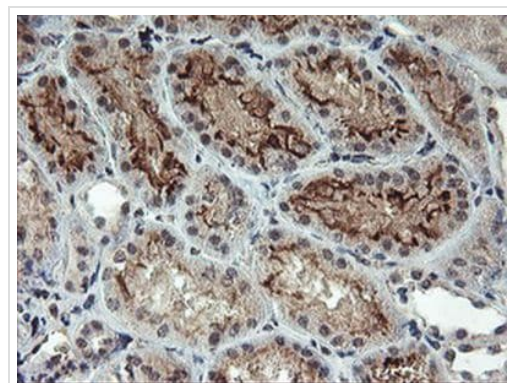
**All lanes :** Anti-RFXANK antibody [OTI3E7] (ab236408) at 1/2000 dilution

**Lane 1 :** pCMV6-ENTRY control cDNA transfected HEK-293T (human epithelial cell line from embryonic kidney transformed with large T antigen) cell lysate

**Lane 2 :** pCMV6-ENTRY RFXANK cDNA transfected HEK-293T cell lysate

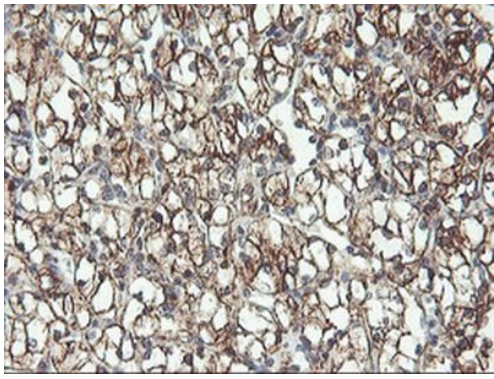
Lysates/proteins at 5 µg per lane.

**Predicted band size:** 24, 28 kDa



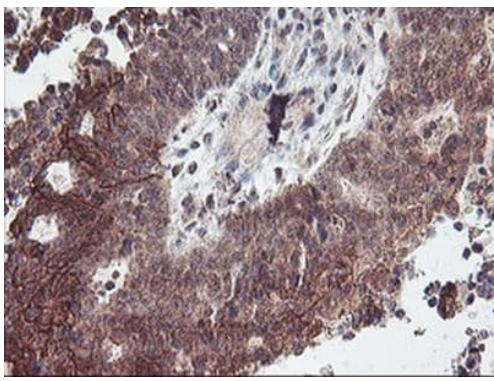
Immunohistochemistry (Formalin/PFA-fixed paraffin-embedded sections) - Anti-RFXANK antibody [OTI3E7] (ab236408)

Paraffin-embedded human kidney tissue stained for RFXANK using ab236408 at 1/150 dilution in immunohistochemical analysis.



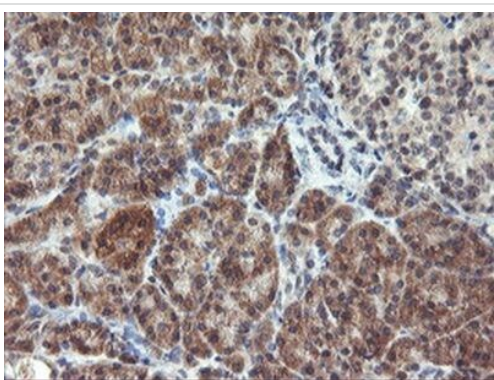
Immunohistochemistry (Formalin/PFA-fixed paraffin-embedded sections) - Anti-RFXANK antibody [OTI3E7] (ab236408)

Paraffin-embedded human kidney carcinoma tissue stained for RFXANK using ab236408 at 1/150 dilution in immunohistochemical analysis.



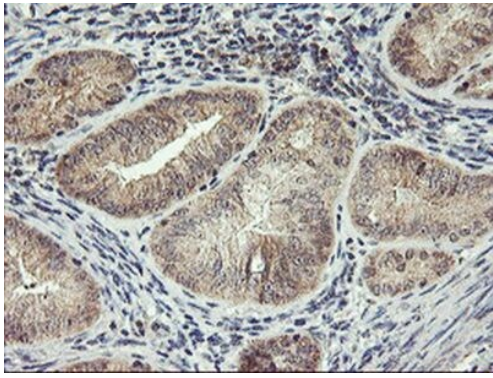
Immunohistochemistry (Formalin/PFA-fixed paraffin-embedded sections) - Anti-RFXANK antibody [OTI3E7] (ab236408)

Paraffin-embedded human ovary adenocarcinoma tissue stained for RFXANK using ab236408 at 1/150 dilution in immunohistochemical analysis.



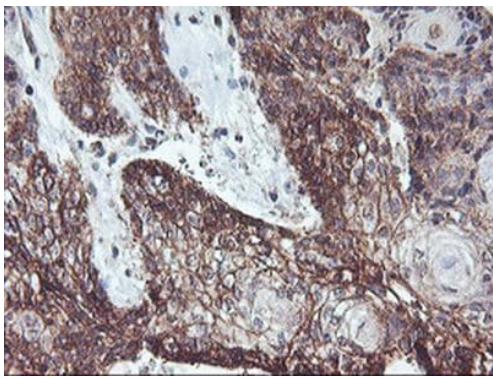
Immunohistochemistry (Formalin/PFA-fixed paraffin-embedded sections) - Anti-RFXANK antibody [OTI3E7] (ab236408)

Paraffin-embedded human pancreas tissue stained for RFXANK using ab236408 at 1/150 dilution in immunohistochemical analysis.



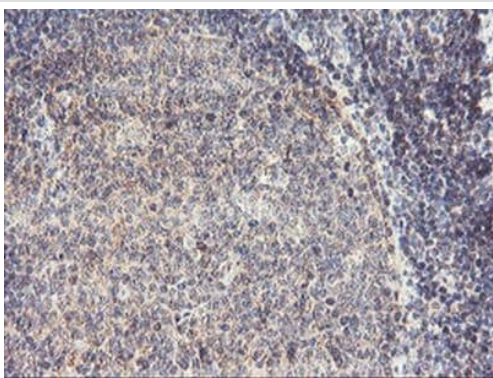
Immunohistochemistry (Formalin/PFA-fixed paraffin-embedded sections) - Anti-RFXANK antibody [OTI3E7] (ab236408)

Paraffin-embedded human endometrium adenocarcinoma tissue stained for RFXANK using ab236408 at 1/150 dilution in immunohistochemical analysis.



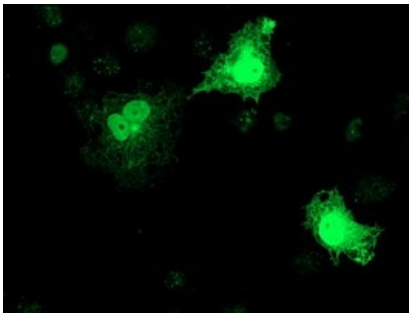
Immunohistochemistry (Formalin/PFA-fixed paraffin-embedded sections) - Anti-RFXANK antibody [OTI3E7] (ab236408)

Paraffin-embedded human bladder carcinoma tissue stained for RFXANK using ab236408 at 1/150 dilution in immunohistochemical analysis.



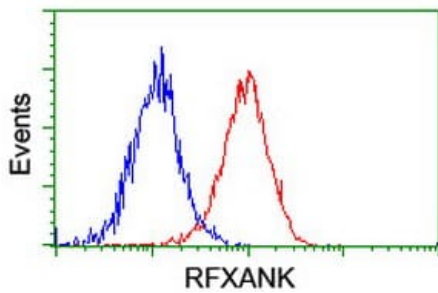
Immunohistochemistry (Formalin/PFA-fixed paraffin-embedded sections) - Anti-RFXANK antibody [OTI3E7] (ab236408)

Paraffin-embedded human tonsil tissue stained for RFXANK using ab236408 at 1/150 dilution in immunohistochemical analysis.



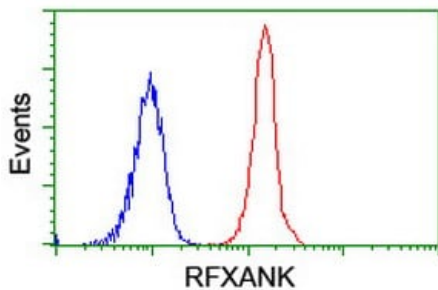
Immunocytochemistry/ Immunofluorescence - Anti-RFXANK antibody [OTI3E7] (ab236408)

COS-7 (african green monkey kidney fibroblast-like cell line) cells transiently transfected by pCMV6-ENTRY RFXANK stained for RFXANK (green) using ab236408 at 1/100 dilution in ICC/IF.



Flow Cytometry - Anti-RFXANK antibody [OTI3E7] (ab236408)

Flow cytometric analysis of HeLa (human epithelial cell line from cervix adenocarcinoma) cell line labeling RFXANK with ab226408 at 1/100 dilution (red) compared to a nonspecific negative control antibody (blue).



Flow Cytometry - Anti-RFXANK antibody [OTI3E7] (ab236408)

Flow cytometric analysis of Jurkat (human T cell leukemia cell line from peripheral blood) cell line labeling RFXANK with ab226408 at 1/100 dilution (red) compared to a nonspecific negative control antibody (blue).

**Please note:** All products are "FOR RESEARCH USE ONLY. NOT FOR USE IN DIAGNOSTIC PROCEDURES"

### Our Promise to you: Quality guaranteed and expert technical support

- Replacement or refund for products not performing as stated on the datasheet
- Valid for 12 months from date of delivery
- Response to your inquiry within 24 hours
- We provide support in Chinese, English, French, German, Japanese and Spanish

- Extensive multi-media technical resources to help you
- We investigate all quality concerns to ensure our products perform to the highest standards

If the product does not perform as described on this datasheet, we will offer a refund or replacement. For full details of the Abpromise, please visit <https://www.abcam.com/abpromise> or contact our technical team.

### **Terms and conditions**

---

- Guarantee only valid for products bought direct from Abcam or one of our authorized distributors