




Product datasheet

Anti-RGC-32 antibody - C-terminal ab214294

3 Images

Overview

Product name	Anti-RGC-32 antibody - C-terminal
Description	Rabbit polyclonal to RGC-32 - C-terminal
Host species	Rabbit
Tested applications	Suitable for: IHC-P
Species reactivity	Reacts with: Rat, Human Predicted to work with: Mouse 
Immunogen	Synthetic peptide within Human RGC-32 aa 98-137 (C terminal) conjugated to keyhole limpet haemocyanin. The exact sequence is proprietary. Sequence: PTDSTPALLSATVTPQKAKLGDTKLEAFIADLDKTLA SM Database link: Q9H4X1  Run BLAST with  Run BLAST with
Positive control	IHC-P: Human kidney and rat brain tissues.
General notes	Previously labelled as C13orf15.

Properties

Form	Liquid
Storage instructions	Shipped at 4°C. Store at +4°C short term (1-2 weeks). Upon delivery aliquot. Store at -20°C long term. Avoid freeze / thaw cycle.
Storage buffer	Preservative: 0.09% Sodium azide Constituents: 50% Glycerol, 1% BSA
Purity	Protein A purified
Clonality	Polyclonal
Isotype	IgG

Applications

Our [Abpromise guarantee](#) covers the use of **ab214294** in the following tested applications.

The application notes include recommended starting dilutions; optimal dilutions/concentrations should be determined by the end user.

Application	Abreviews	Notes
IHC-P		1/100 - 1/500. Perform heat mediated antigen retrieval with citrate buffer pH 6 before commencing with IHC staining protocol.

Target

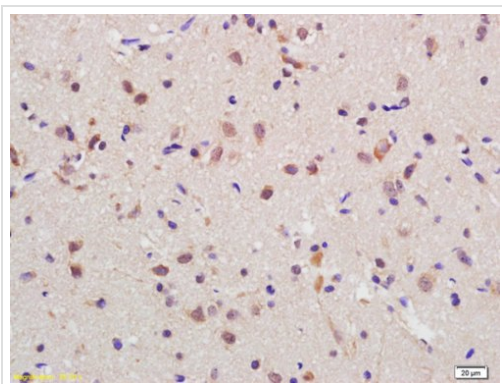
Relevance

Function: Modulates the activity of cell cycle-specific kinases. Enhances CDK1 activity. May contribute to the regulation of the cell cycle. May inhibit growth of glioma cells by promoting arrest of mitotic progression at the G2/M transition. Fibrogenic factor contributing to the pathogenesis of renal fibrosis through fibroblast activation. Tissue specificity: Detected in brain, heart and liver (at protein level). Highly expressed in liver, skeletal muscle, kidney and pancreas. Detected at lower levels in heart, brain and placenta. Detected in aorta endothelial cells. Overexpressed in colon, breast, prostate, bladder, lung, and ovarian cancer tissues.

Cellular localization

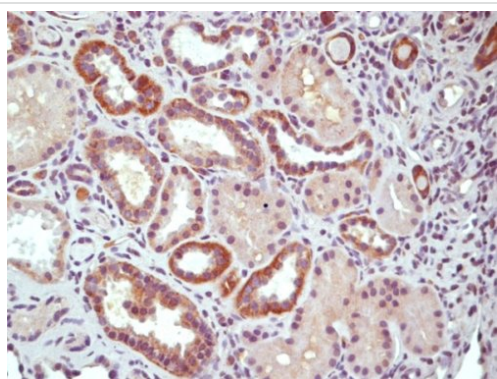
Cytoplasm. Nucleus. Cytoplasm › cytoskeleton › centrosome. Note: Cytoplasmic in unstimulated cells. Nuclear after activation by complement. Associated with the centrosome during prometaphase and metaphase.

Images



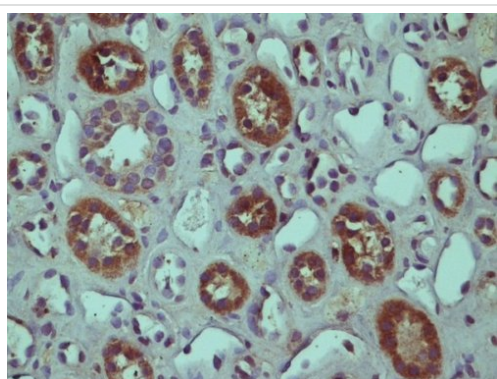
Immunohistochemical analysis of formalin-fixed paraffin-embedded rat brain tissue, labeling RGC-32 using ab214294 at a 1/200 dilution, followed by conjugation to the secondary antibody and DAB staining.

Immunohistochemistry (Formalin/PFA-fixed paraffin-embedded sections) - Anti-RGC-32 antibody - C-terminal (ab214294)



Immunohistochemistry (Formalin/PFA-fixed paraffin-embedded sections) - Anti-RGC-32 antibody - C-terminal (ab214294)

Immunohistochemical analysis of paraffin-embedded human kidney tissue, labeling RGC-32 using ab214294 at a 1/200 dilution.



Immunohistochemistry (Formalin/PFA-fixed paraffin-embedded sections) - Anti-RGC-32 antibody - C-terminal (ab214294)

Immunohistochemical analysis of paraffin-embedded human kidney tissue, labeling RGC-32 using ab214294 at a 1/200 dilution.

Please note: All products are "FOR RESEARCH USE ONLY. NOT FOR USE IN DIAGNOSTIC PROCEDURES"

Our Abpromise to you: Quality guaranteed and expert technical support

- Replacement or refund for products not performing as stated on the datasheet
- Valid for 12 months from date of delivery
- Response to your inquiry within 24 hours
- We provide support in Chinese, English, French, German, Japanese and Spanish

- Extensive multi-media technical resources to help you
- We investigate all quality concerns to ensure our products perform to the highest standards

If the product does not perform as described on this datasheet, we will offer a refund or replacement. For full details of the Abpromise, please visit <https://www.abcam.com/abpromise> or contact our technical team.

Terms and conditions

- Guarantee only valid for products bought direct from Abcam or one of our authorized distributors