




Product datasheet

Anti-RGS3 antibody - C-terminal ab191047

2 Images

Overview

Product name	Anti-RGS3 antibody - C-terminal
Description	Rabbit polyclonal to RGS3 - C-terminal
Host species	Rabbit
Specificity	No cross reactivity with other proteins.
Tested applications	Suitable for: WB, IHC-P
Species reactivity	Reacts with: Rat, Human Predicted to work with: Mouse 
Immunogen	Synthetic peptide corresponding to Mouse RGS3 aa 909-925 (C terminal). Sequence: DSYTREHTKENLQSITR Database link: Q9DC04  Run BLAST with  Run BLAST with
Positive control	Rat testis, rat brain rat spleen, HeLa and U87 cell lysates; rat intestine tissue.

Properties

Form	Liquid
Storage instructions	Shipped at 4°C. Store at +4°C short term (1-2 weeks). Upon delivery aliquot. Store at -20°C long term. Avoid freeze / thaw cycle.
Storage buffer	Preservatives: 0.025% Thimerosal (merthiolate), 0.025% Sodium azide Constituents: 2.5% BSA, 0.45% Sodium chloride, 0.1% Dibasic monohydrogen sodium phosphate
Purity	Immunogen affinity purified
Clonality	Polyclonal
Isotype	IgG

Applications

Our [Abpromise guarantee](#) covers the use of **ab191047** in the following tested applications.

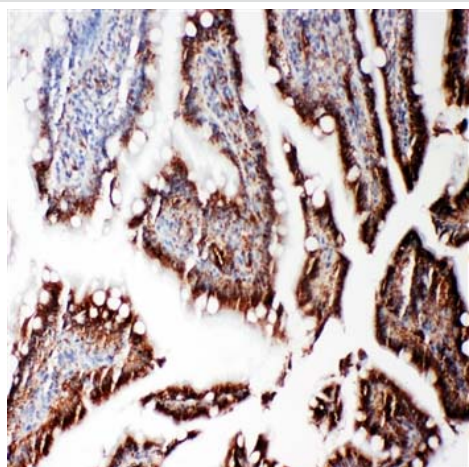
The application notes include recommended starting dilutions; optimal dilutions/concentrations should be determined by the end user.

Application	Abreviews	Notes
WB		Use a concentration of 0.1 - 0.5 µg/ml. Predicted molecular weight: 106 kDa.
IHC-P		Use a concentration of 0.5 - 1 µg/ml. Perform heat mediated antigen retrieval with citrate buffer pH 6 before commencing with IHC staining protocol.

Target

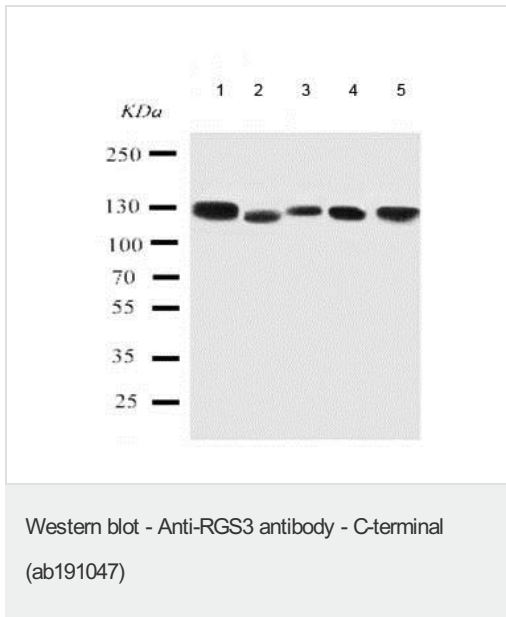
Function	Down-regulates signaling from heterotrimeric G-proteins by increasing the GTPase activity of the alpha subunits, thereby driving them into their inactive GDP-bound form. Down-regulates G-protein-mediated release of inositol phosphates and activation of MAP kinases.
Sequence similarities	Contains 1 C2 domain. Contains 1 PDZ (DHR) domain. Contains 1 RGS domain.
Post-translational modifications	Phosphorylated by cyclic GMP-dependent protein kinase. ISGylated.
Cellular localization	Cytoplasm. Nucleus. Cell membrane. Long isoforms are cytoplasmic and associated with the plasma membrane. Short isoforms are nuclear.

Images



Immunohistochemical analysis of paraffin-embedded rat intestine tissue labeling RGS3 with ab191047 at 1 µg/ml.

Immunohistochemistry (Formalin/PFA-fixed paraffin-embedded sections) - Anti-RGS3 antibody - C-terminal (ab191047)



All lanes : Anti-RGS3 antibody - C-terminal (ab191047) at 0.5 µg/ml

Lane 1 : Rat testis tissue lysate

Lane 2 : Rat brain tissue lysate

Lane 3 : Rat spleen tissue lysate

Lane 4 : HeLa cell lysate

Lane 5 : U87 cell lysate

Predicted band size: 106 kDa

Please note: All products are "FOR RESEARCH USE ONLY. NOT FOR USE IN DIAGNOSTIC PROCEDURES"

Our Abpromise to you: Quality guaranteed and expert technical support

- Replacement or refund for products not performing as stated on the datasheet
- Valid for 12 months from date of delivery
- Response to your inquiry within 24 hours
- We provide support in Chinese, English, French, German, Japanese and Spanish
- Extensive multi-media technical resources to help you
- We investigate all quality concerns to ensure our products perform to the highest standards

If the product does not perform as described on this datasheet, we will offer a refund or replacement. For full details of the Abpromise, please visit <https://www.abcam.com/abpromise> or contact our technical team.

Terms and conditions

- Guarantee only valid for products bought direct from Abcam or one of our authorized distributors