

Product datasheet

Anti-RHAG antibody [EPR10011] ab155094

Recombinant RabMAb

[1 References](#) [6 Images](#)

Overview

Product name	Anti-RHAG antibody [EPR10011]
Description	Rabbit monoclonal [EPR10011] to RHAG
Host species	Rabbit
Tested applications	Suitable for: WB, IHC-P Unsuitable for: ICC or IP
Species reactivity	Reacts with: Mouse, Rat, Human
Immunogen	Synthetic peptide corresponding to Human RHAG aa 350 to the C-terminus. Database link: Q02094
Positive control	Human fetal kidney, fetal liver and bone marrow lysates; Human lung and spleen tissues.
General notes	Our RabMAb [®] technology is a patented hybridoma-based technology for making rabbit monoclonal antibodies. For details on our patents, please refer to RabMAb[®] patents . This product is a recombinant rabbit monoclonal antibody .

Properties

Form	Liquid
Storage instructions	Shipped at 4°C. Store at -20°C.
Storage buffer	Preservative: 0.01% Sodium azide Constituents: 9% PBS, 40% Glycerol, 0.05% BSA, 50% Tissue culture supernatant
Purity	Tissue culture supernatant
Clonality	Monoclonal
Clone number	EPR10011
Isotype	IgG

Applications

Our [Abpromise guarantee](#) covers the use of **ab155094** in the following tested applications.

The application notes include recommended starting dilutions; optimal dilutions/concentrations should be determined by the end user.

Application	Abreviews	Notes
WB		1/1000 - 1/10000. Predicted molecular weight: 44 kDa.
IHC-P		1/250 - 1/500. Perform heat mediated antigen retrieval before commencing with IHC staining protocol.

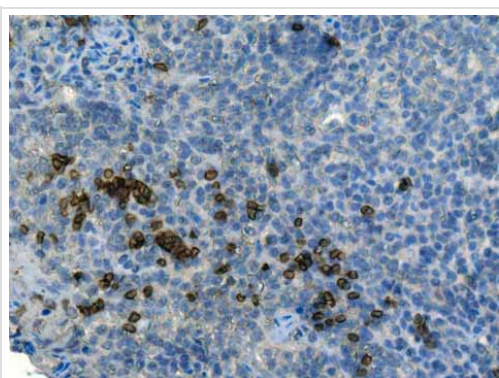
Application notes Is unsuitable for ICC or IP.

Target

Relevance RHAG (Rhesus blood group-associated glycoprotein) is associated with rhesus blood group antigen expression. It may be part of an oligomeric complex which is likely to have a transport or channel function in the erythrocyte membrane. The Rh blood group antigens are associated with human erythrocyte membrane proteins of approximately 30 kD, the so-called Rh30 polypeptides. Heterogeneously glycosylated membrane proteins of 50 and 45 kD, the Rh50 glycoproteins, are coprecipitated with the Rh30 polypeptides on immunoprecipitation with anti-Rh-specific mono- and polyclonal antibodies. The Rh antigens appear to exist as a multisubunit complex of CD47, LW, glycophorin B and play a critical role in the Rh50 glycoprotein.

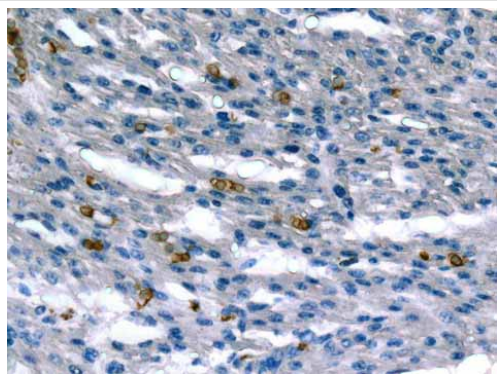
Cellular localization Cell Membrane; multi-pass membrane protein

Images



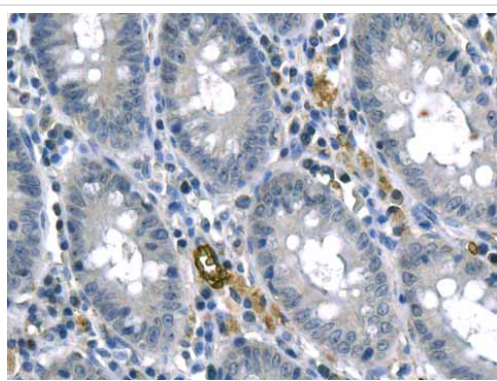
ab155094 showing +ve staining in Human normal tonsil.

Immunohistochemistry (Formalin/PFA-fixed paraffin-embedded sections) - Anti-RHAG antibody [EPR10011] (ab155094)



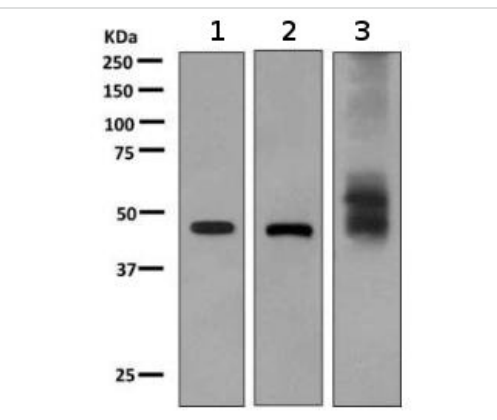
Immunohistochemistry (Formalin/PFA-fixed paraffin-embedded sections) - Anti-RHAG antibody [EPR10011] (ab155094)

ab155094 showing +ve staining in Human normal heart.



Immunohistochemistry (Formalin/PFA-fixed paraffin-embedded sections) - Anti-RHAG antibody [EPR10011] (ab155094)

ab155094 showing +ve staining in Human normal colon.



Western blot - Anti-RHAG antibody [EPR10011] (ab155094)

All lanes : Anti-RHAG antibody [EPR10011] (ab155094) at 1/1000 dilution

Lane 1 : Human fetal kidney cell lysate

Lane 2 : Human fetal liver cell lysate

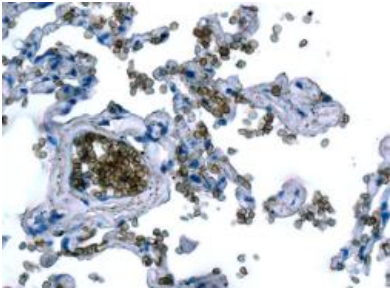
Lane 3 : Human bone marrow cell lysate

Lysates/proteins at 10 µg per lane.

Secondary

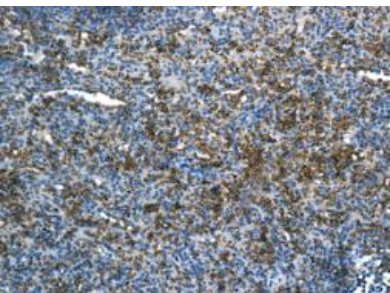
All lanes : Goat anti-rabbit HRP at 1/2000 dilution

Predicted band size: 44 kDa



Immunohistochemical analysis of paraffin-embedded Human lung tissue labeling RHAG with ab155094 at 1/250 dilution.

Immunohistochemistry (Formalin/PFA-fixed paraffin-embedded sections) - Anti-RHAG antibody [EPR10011] (ab155094)



Immunohistochemical analysis of paraffin-embedded Human spleen tissue labeling RHAG with ab155094 at 1/250 dilution.

Immunohistochemistry (Formalin/PFA-fixed paraffin-embedded sections) - Anti-RHAG antibody [EPR10011] (ab155094)

Please note: All products are "FOR RESEARCH USE ONLY AND ARE NOT INTENDED FOR DIAGNOSTIC OR THERAPEUTIC USE"

Our Abpromise to you: Quality guaranteed and expert technical support

- Replacement or refund for products not performing as stated on the datasheet
- Valid for 12 months from date of delivery
- Response to your inquiry within 24 hours
- We provide support in Chinese, English, French, German, Japanese and Spanish
- Extensive multi-media technical resources to help you
- We investigate all quality concerns to ensure our products perform to the highest standards

If the product does not perform as described on this datasheet, we will offer a refund or replacement. For full details of the Abpromise, please visit <https://www.abcam.com/abpromise> or contact our technical team.

Terms and conditions

- Guarantee only valid for products bought direct from Abcam or one of our authorized distributors