




Product datasheet

Anti-RHOG antibody ab224555

3 Images

Overview

| | |
|----------------------------|---|
| Product name | Anti-RHOG antibody |
| Description | Rabbit polyclonal to RHOG |
| Host species | Rabbit |
| Tested applications | Suitable for: IHC-P, WB |
| Species reactivity | Reacts with: Mouse, Rat, Human Predicted to work with: Hamster  |
| Immunogen | Recombinant fragment corresponding to Human RHOG aa 117-155. Sequence: KDLRAQPDTLRRRLKEQGQAPITPQQGQALAKQIHAVRY L Database link: P84095  Run BLAST with  Run BLAST with |
| Positive control | IHC-P: Human tonsil tissue. WB: RT4, NIH/3T3 and NBT-II cell lysates. |

Properties

| | |
|-----------------------------|---|
| Form | Liquid |
| Storage instructions | Shipped at 4°C. Store at +4°C short term (1-2 weeks). Upon delivery aliquot. Store at -20°C long term. Avoid freeze / thaw cycle. |
| Storage buffer | pH: 7.20 Preservative: 0.02% Sodium azide Constituents: 40% Glycerol, PBS |
| Purity | Immunogen affinity purified |
| Clonality | Polyclonal |
| Isotype | IgG |

Applications

Our [Abpromise guarantee](#) covers the use of **ab224555** in the following tested applications.

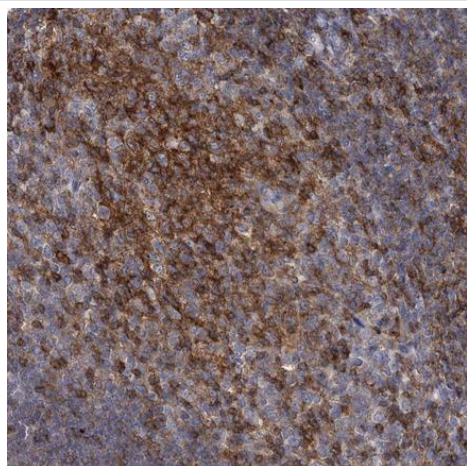
The application notes include recommended starting dilutions; optimal dilutions/concentrations should be determined by the end user.

| Application | Abreviews | Notes |
|-------------|-----------|--|
| IHC-P | | 1/50 - 1/200. Perform heat mediated antigen retrieval with citrate buffer pH 6 before commencing with IHC staining protocol. |
| WB | | 1/100 - 1/250. Predicted molecular weight: 21 kDa. |

Target

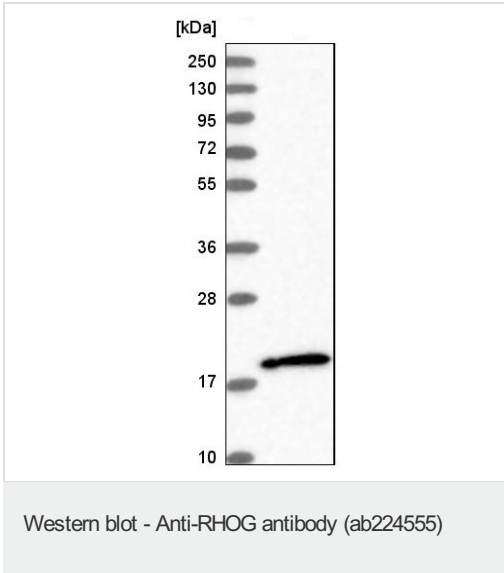
| | |
|------------------------------|---|
| Function | Required for the formation of membrane ruffles during macropinocytosis. Required for the formation of cup-like structures during trans-endothelial migration of leukocytes. In case of <i>Salmonella enterica</i> infection, activated by SopB and ARHGEF26/SGEF, which induces cytoskeleton rearrangements and promotes bacterial entry. |
| Sequence similarities | Belongs to the small GTPase superfamily. Rho family. |
| Cellular localization | Cell membrane. |

Images



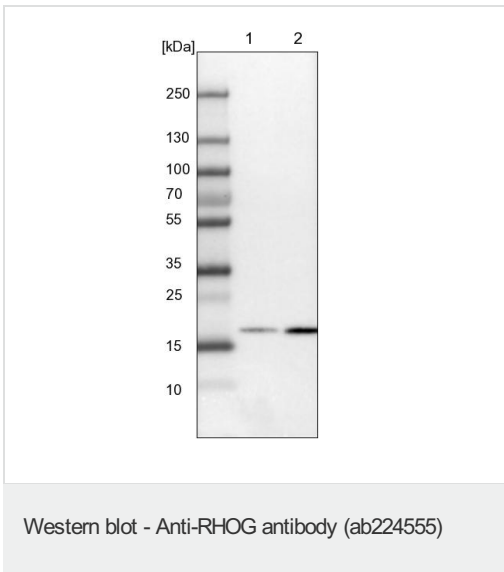
Paraffin-embedded human tonsil tissue stained for RHO G using ab224555 at 1/50 dilution in immunohistochemical analysis.

Immunohistochemistry (Formalin/PFA-fixed paraffin-embedded sections) - Anti-RHO G antibody (ab224555)



Anti-RHOG antibody (ab224555) at 1/100 dilution + RT4 (human urinary bladder cancer cell line) cell lysate

Predicted band size: 21 kDa



All lanes : Anti-RHOG antibody (ab224555) at 1/100 dilution

Lane 1 : NIH/3T3 (mouse embryo fibroblast cell line) cell lysate

Lane 2 : NBT-II cell lysate

Predicted band size: 21 kDa

Please note: All products are "FOR RESEARCH USE ONLY. NOT FOR USE IN DIAGNOSTIC PROCEDURES"

Our Abpromise to you: Quality guaranteed and expert technical support

- Replacement or refund for products not performing as stated on the datasheet
- Valid for 12 months from date of delivery
- Response to your inquiry within 24 hours

- We provide support in Chinese, English, French, German, Japanese and Spanish
- Extensive multi-media technical resources to help you
- We investigate all quality concerns to ensure our products perform to the highest standards

If the product does not perform as described on this datasheet, we will offer a refund or replacement. For full details of the Abpromise, please visit <https://www.abcam.com/abpromise> or contact our technical team.

Terms and conditions

- Guarantee only valid for products bought direct from Abcam or one of our authorized distributors