



Product datasheet

Anti-Ribonuclease U2 antibody ab234677

1 Image

Overview

Product name	Anti-Ribonuclease U2 antibody
Description	Rabbit polyclonal to Ribonuclease U2
Host species	Rabbit
Specificity	Predicted to react with <i>Ustilago sphaerogena</i> .
Tested applications	Suitable for: WB
Species reactivity	Reacts with: Species independent
Immunogen	<p>Recombinant full length protein corresponding to Ribonuclease U2 aa 1-114. (<i>Ustilago sphaerogena</i>). (With N-terminal SUMO tag).</p> <p>Sequence:</p> <p>CDIPQSTNCGGNVYSNDDINTAIQGALDDVANGDRPD NYPHQYYDEASED ITLCCGSGPWSEFPLVYNGPYSSRDNYVSPGPDRVIY QTNTGEFCATVT HTGAASYDGFTQCS</p> <p>Database link: P00654</p> <p style="text-align: right;">  Run BLAST with  Run BLAST with </p>
Positive control	WB: Recombinant <i>Ustilago sphaerogena</i> Ribonuclease U2 protein.

Properties

Form	Liquid
Storage instructions	Shipped at 4°C. Store at +4°C short term (1-2 weeks). Upon delivery aliquot. Store at -20°C long term. Avoid freeze / thaw cycle.
Storage buffer	<p>pH: 7.40</p> <p>Preservative: 0.03% Proclin</p> <p>Constituents: PBS, 50% Glycerol</p>
Purity	Protein G purified
Purification notes	Purity >95%.
Clonality	Polyclonal
Isotype	IgG

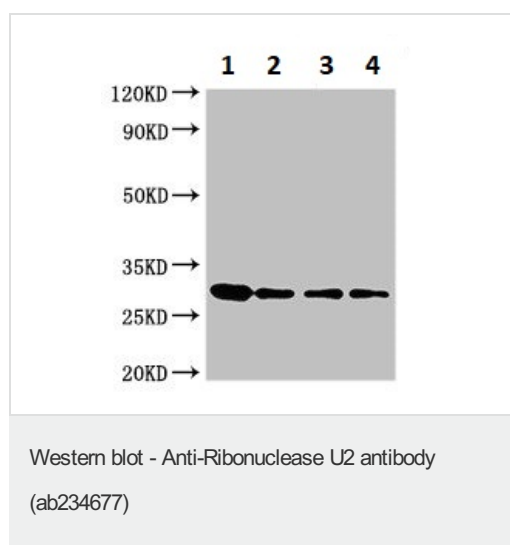
Applications

Our [Abpromise guarantee](#) covers the use of **ab234677** in the following tested applications.

The application notes include recommended starting dilutions; optimal dilutions/concentrations should be determined by the end user.

Application	Abreviews	Notes
WB		1/500 - 1/5000. Detects a band of approximately 30 kDa (predicted molecular weight: 12 kDa).

Images



All lanes : Anti-Ribonuclease U2 antibody (ab234677) at 1/500 dilution

Lane 1 : Recombinant *Ustilago sphaerogena* Ribonuclease U2 protein, 80 ng

Lane 2 : Recombinant *Ustilago sphaerogena* Ribonuclease U2 protein, 40 ng

Lane 3 : Recombinant *Ustilago sphaerogena* Ribonuclease U2 protein, 20 ng

Lane 4 : Recombinant *Ustilago sphaerogena* Ribonuclease U2 protein, 10 ng

Secondary

All lanes : Goat polyclonal to rabbit IgG at 1/50000 dilution

Predicted band size: 12 kDa

Observed band size: 30 kDa

[why is the actual band size different from the predicted?](#)

Predicted MW of recombinant protein with N-terminal SUMO tag:
28 kDa.

Please note: All products are "FOR RESEARCH USE ONLY. NOT FOR USE IN DIAGNOSTIC PROCEDURES"

Our Abpromise to you: Quality guaranteed and expert technical support

- Replacement or refund for products not performing as stated on the datasheet
- Valid for 12 months from date of delivery
- Response to your inquiry within 24 hours
- We provide support in Chinese, English, French, German, Japanese and Spanish

- Extensive multi-media technical resources to help you
- We investigate all quality concerns to ensure our products perform to the highest standards

If the product does not perform as described on this datasheet, we will offer a refund or replacement. For full details of the Abpromise, please visit <https://www.abcam.com/abpromise> or contact our technical team.

Terms and conditions

- Guarantee only valid for products bought direct from Abcam or one of our authorized distributors