




Product datasheet

Anti-RIC3 antibody ab204786

1 Image

Overview

Product name	Anti-RIC3 antibody
Description	Rabbit polyclonal to RIC3
Host species	Rabbit
Tested applications	Suitable for: IHC-P
Species reactivity	Reacts with: Human Predicted to work with: Mouse, Rat 
Immunogen	Recombinant fragment corresponding to Human RIC3 aa 118-197. Sequence: LSKGGKTTAEDGKCYTAMPGNTHRKITSFELAQLQEKLK ETEAAAMEKLINR VGPNGERAQTVTSDQEKRLHQLREITRVM Database link: Q7Z5B4-5  Run BLAST with  Run BLAST with
Positive control	Human pancreas tissue.

Properties

Form	Liquid
Storage instructions	Shipped at 4°C. Store at +4°C short term (1-2 weeks). Upon delivery aliquot. Store at -20°C long term. Avoid freeze / thaw cycle.
Storage buffer	pH: 7.2 Preservative: 0.02% Sodium azide Constituents: 40% Glycerol, 59% PBS
Purity	Immunogen affinity purified
Clonality	Polyclonal
Isotype	IgG

Applications

Our [Abpromise guarantee](#) covers the use of **ab204786** in the following tested applications.

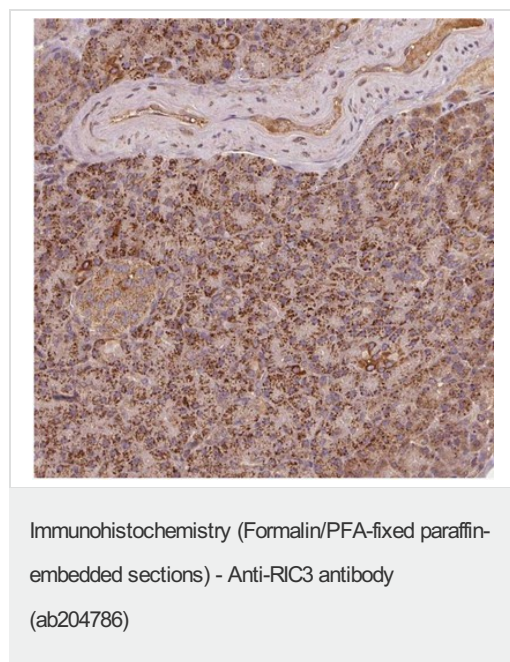
The application notes include recommended starting dilutions; optimal dilutions/concentrations should be determined by the end user.

Application	Abreviews	Notes
IHC-P		1/50 - 1/200. Perform heat mediated antigen retrieval with citrate buffer pH 6 before commencing with IHC staining protocol.

Target

Function	Promotes functional expression of homomeric alpha-7 and alpha-8 nicotinic acetylcholine receptors at the cell surface. May also promote functional expression of homomeric serotonergic 5-HT3 receptors, and of heteromeric acetylcholine receptors alpha-3/beta-2, alpha-3/beta-4, alpha-4/beta-2 and alpha-4/beta-4.
Tissue specificity	Broadly expressed, with high levels in muscle, brain and heart. Over-expressed in brains from patients with bipolar disease or schizophrenia.
Sequence similarities	Belongs to the ric-3 family.
Cellular localization	Endoplasmic reticulum membrane and Endoplasmic reticulum membrane. Golgi apparatus membrane.

Images



Immunohistochemical analysis of paraffin-embedded Human pancreas tissue labeling RIC3 with ab204786 at 1/50 dilution.

Please note: All products are "FOR RESEARCH USE ONLY. NOT FOR USE IN DIAGNOSTIC PROCEDURES"

Our Abpromise to you: Quality guaranteed and expert technical support

- Replacement or refund for products not performing as stated on the datasheet

- Valid for 12 months from date of delivery
- Response to your inquiry within 24 hours

- We provide support in Chinese, English, French, German, Japanese and Spanish
- Extensive multi-media technical resources to help you
- We investigate all quality concerns to ensure our products perform to the highest standards

If the product does not perform as described on this datasheet, we will offer a refund or replacement. For full details of the Abpromise, please visit <https://www.abcam.com/abpromise> or contact our technical team.

Terms and conditions

- Guarantee only valid for products bought direct from Abcam or one of our authorized distributors