




Product datasheet

Anti-RIC8A antibody ab194941

2 Images

Overview

Product name	Anti-RIC8A antibody
Description	Rabbit polyclonal to RIC8A
Host species	Rabbit
Tested applications	Suitable for: IP, WB
Species reactivity	Reacts with: Mouse, Human Predicted to work with: Rat, Sheep, Rabbit, Horse, Cow, Dog, Pig, Chimpanzee, Cynomolgus monkey, Rhesus monkey, Gorilla, Orangutan 
Immunogen	Recombinant fragment within Human RIC8A aa 418-468. The exact sequence is proprietary. Sequence: GLLAARGLMAGGRPEGQYSEDEDTDTEYKEAKASIN PVTGRVEEKPPNP M Database link: Q9NPQ8  Run BLAST with  Run BLAST with
Positive control	Whole cell lysate from HeLa, 293T, Jurkat, mouse TCMK-1 and mouse NIH 3T3 cells.

Properties

Form	Liquid
Storage instructions	Shipped at 4°C. Store at +4°C short term (1-2 weeks). Upon delivery aliquot. Store at -20°C long term. Avoid freeze / thaw cycle.
Storage buffer	Preservative: 0.09% Sodium azide Constituent: 99% Tris citrate/phosphate pH 7 to 8
Purity	Immunogen affinity purified
Clonality	Polyclonal
Isotype	IgG

Applications

Our [Abpromise guarantee](#) covers the use of **ab194941** in the following tested applications.

The application notes include recommended starting dilutions; optimal dilutions/concentrations should be determined by the end user.

Application	Abreviews	Notes
IP		Use at 2-10 µg/mg of lysate.
WB		1/2000 - 1/10000. Predicted molecular weight: 60 kDa.

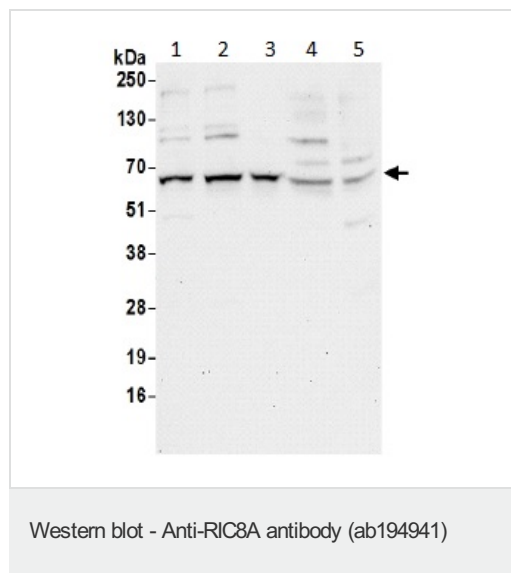
Target

Function Guanine nucleotide exchange factor (GEF), which can activate some, but not all, G-alpha proteins. Able to activate GNAI1, GNAO1 and GNAQ, but not GNAS by exchanging bound GDP for free GTP. Involved in regulation of microtubule pulling forces during mitotic movement of chromosomes by stimulating G(i)-alpha protein, possibly leading to release G(i)-alpha-GTP and NuMA proteins from the NuMA-GPSM2-G(i)-alpha-GDP complex (By similarity). Also acts as an activator for G(q)-alpha (GNAQ) protein by enhancing the G(q)-coupled receptor-mediated ERK activation.

Sequence similarities Belongs to the synembryn family.

Cellular localization Cytoplasm. Cell membrane. Colocalizes with RIC8A in CA2 hippocampal neurons. Colocalizes with GNAI1 and RGS14 at the plasma membrane (By similarity).

Images



All lanes : Anti-RIC8A antibody (ab194941) at 0.1 µg/ml

Lane 1 : Whole cell lysate from HeLa

Lane 2 : Whole cell lysate from 293T

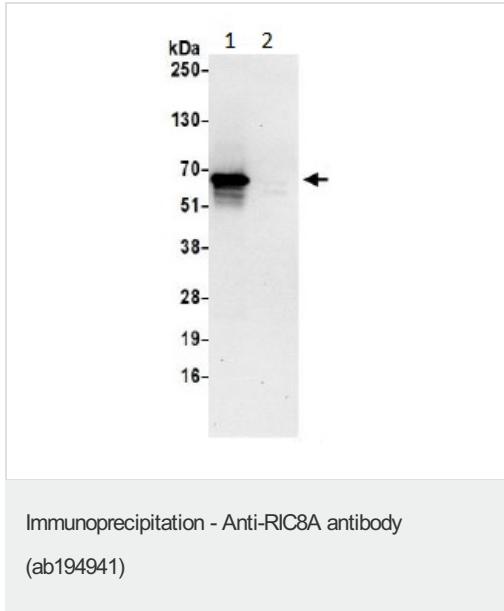
Lane 3 : Whole cell lysate from Jurkat

Lane 4 : Whole cell lysate from TCMK-1

Lane 5 : Whole cell lysate from NIH3T3

Lysates/proteins at 50 µg per lane.

Predicted band size: 60 kDa



Detection of Human RIC8A by Western Blot of Immunoprecipitate.

Lane 1: Whole cell lysate from Jurkat cells (0.5 or 1.0 mg per IP reaction; 20% of IP loaded) prepared using NETN lysis buffer. ab194941 was used for IP at 6 µg per reaction, and at 1 µg/ml for blotting the immunoprecipitate.

Lane 2: Control IgG.

Detection: Chemiluminescence with an exposure time of 30 seconds.

Please note: All products are "FOR RESEARCH USE ONLY. NOT FOR USE IN DIAGNOSTIC PROCEDURES"

Our Abpromise to you: Quality guaranteed and expert technical support

- Replacement or refund for products not performing as stated on the datasheet
- Valid for 12 months from date of delivery
- Response to your inquiry within 24 hours
- We provide support in Chinese, English, French, German, Japanese and Spanish
- Extensive multi-media technical resources to help you
- We investigate all quality concerns to ensure our products perform to the highest standards

If the product does not perform as described on this datasheet, we will offer a refund or replacement. For full details of the Abpromise, please visit <https://www.abcam.com/abpromise> or contact our technical team.

Terms and conditions

- Guarantee only valid for products bought direct from Abcam or one of our authorized distributors