




Product datasheet

Anti-RICTOR antibody [1G3P2C9] ab176850

2 Images

Overview

Product name	Anti-RICTOR antibody [1G3P2C9]
Description	Mouse monoclonal [1G3P2C9] to RICTOR
Host species	Mouse
Tested applications	Suitable for: IHC-P, WB
Species reactivity	Reacts with: Human Predicted to work with: Dog, Chimpanzee, Rhesus monkey, Gorilla, Orangutan 
Immunogen	Synthetic peptide within Human RICTOR aa 1650-1708 (C terminal). The exact sequence is proprietary. Sequence: ICLYSEVSHLL SHCTFRLPCR RFIQELFQDV QFLQMHEEAE AVLATPPKQP MD TSAES Database link: Q6R327  Run BLAST with  Run BLAST with
Epitope	The epitope recognized by ab176850 maps to a region between residue 1650 and the C-terminus (residue 1708) using the numbering given in Q6R327.
Positive control	Human prostate carcinoma tissue; 293T whole cell lysates.
General notes	<p>Reproducibility is key to advancing scientific discovery and accelerating scientists' next breakthrough.</p> <p>Abcam is leading the way with our range of recombinant antibodies, knockout-validated antibodies and knockout cell lines, all of which support improved reproducibility.</p> <p>We are also planning to innovate the way in which we present recommended applications and species on our product datasheets, so that only applications & species that have been tested in our own labs, our suppliers or by selected trusted collaborators are covered by our Abpromise™ guarantee.</p> <p>In preparation for this, we have started to update the applications & species that this product is Abpromise guaranteed for.</p> <p>We are also updating the applications & species that this product has been “predicted to work with,” however this information is not covered by our Abpromise guarantee.</p> <p>Applications & species from publications and Abreviews that have not been tested in our own labs or in those of our suppliers are not covered by the Abpromise guarantee.</p> <p>Please check that this product meets your needs before purchasing. If you have any questions,</p>

special requirements or concerns, please send us an inquiry and/or contact our Support team ahead of purchase. Recommended alternatives for this product can be found below, as well as customer reviews and Q&As.

Properties

Form	Liquid
Storage instructions	Shipped at 4°C. Store at +4°C short term (1-2 weeks). Upon delivery aliquot. Store at -20°C long term. Avoid freeze / thaw cycle.
Storage buffer	pH: 7 Preservative: 0.09% Sodium azide Constituent: 99% Tris citrate/phosphate
	pH 7-8
Purity	Immunogen affinity purified
Purification notes	ab176850 was affinity purified using an epitope specific to RICTOR immobilized on solid support.
Clonality	Monoclonal
Clone number	1G3P2C9
Isotype	IgG1
Light chain type	kappa

Applications

Our [Abpromise guarantee](#) covers the use of **ab176850** in the following tested applications.

The application notes include recommended starting dilutions; optimal dilutions/concentrations should be determined by the end user.

Application	Abreviews	Notes
IHC-P		1/100 - 1/500.
WB		1/1000 - 1/10000. Predicted molecular weight: 192 kDa.

Target

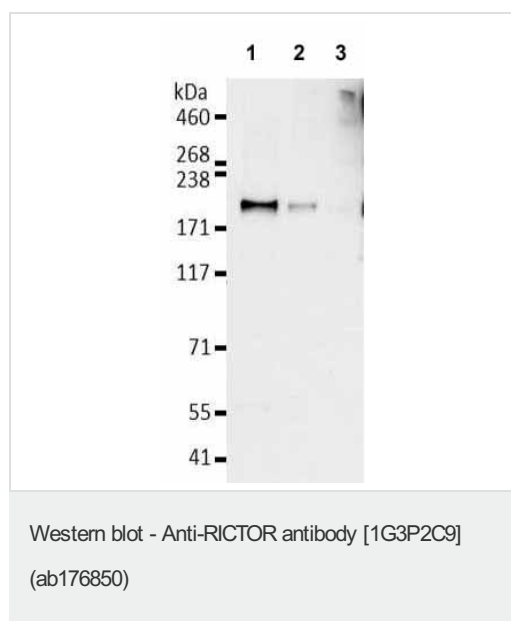
Function Subunit of mTORC2, which regulates cell growth and survival in response to hormonal signals. mTORC2 is activated by growth factors, but, in contrast to mTORC1, seems to be nutrient-insensitive. mTORC2 seems to function upstream of Rho GTPases to regulate the actin cytoskeleton, probably by activating one or more Rho-type guanine nucleotide exchange factors. mTORC2 promotes the serum-induced formation of stress-fibers or F-actin. mTORC2 plays a critical role in AKT1 'Ser-473' phosphorylation, which may facilitate the phosphorylation of the activation loop of AKT1 on 'Thr-308' by PDK1 which is a prerequisite for full activation. mTORC2 regulates the phosphorylation of SGK1 at 'Ser-422'. mTORC2 also modulates the phosphorylation of PRKCA on 'Ser-657'. Plays an essential role in embryonic growth and development.

Sequence similarities Belongs to the RICTOR family.

Post-translational modifications

Phosphorylated by MTOR; when part of mTORC2. Phosphorylated at Thr-1135 by RPS6KB1; phosphorylation of RICTOR inhibits mTORC2 and AKT1 signaling.

Images



All lanes : Anti-RICTOR antibody [1G3P2C9] (ab176850) at 1 µg/ml

Lane 1 : 293T whole cell lysates at 50 µg

Lane 2 : 293T whole cell lysates at 15 µg

Lane 3 : 293T whole cell lysates at 5 µg

Developed using the ECL technique.

Predicted band size: 192 kDa

Exposure time: 10 seconds



Immunohistochemical analysis of formalin-fixed, paraffin-embedded Human prostate carcinoma tissue labeling RICTOR with ab176850 at 1/250 dilution. Detection: DAB staining.

Please note: All products are "FOR RESEARCH USE ONLY. NOT FOR USE IN DIAGNOSTIC PROCEDURES"

Our Abpromise to you: Quality guaranteed and expert technical support

- Replacement or refund for products not performing as stated on the datasheet
- Valid for 12 months from date of delivery
- Response to your inquiry within 24 hours
- We provide support in Chinese, English, French, German, Japanese and Spanish
- Extensive multi-media technical resources to help you
- We investigate all quality concerns to ensure our products perform to the highest standards

If the product does not perform as described on this datasheet, we will offer a refund or replacement. For full details of the Abpromise, please visit <https://www.abcam.com/abpromise> or contact our technical team.

Terms and conditions

- Guarantee only valid for products bought direct from Abcam or one of our authorized distributors