


Product datasheet

Anti-RIDA antibody ab151292

2 Images

Overview

<b>Product name</b>	Anti-RIDA antibody
<b>Description</b>	Rabbit polyclonal to RIDA
<b>Host species</b>	Rabbit
<b>Tested applications</b>	<b>Suitable for:</b> WB, IHC-P
<b>Species reactivity</b>	<b>Reacts with:</b> Human <b>Predicted to work with:</b> Rat, Cow 
<b>Immunogen</b>	Recombinant fragment corresponding to Human RIDA aa 1-137. Database link: <a href="#">P52758</a>
<b>Positive control</b>	A549, HepG2 and HCT116 whole cell lysates; Human DLD1 xenograft tissue.
<b>General notes</b>	This product was previously labelled as HRSP12

The Life Science industry has been in the grips of a reproducibility crisis for a number of years. Abcam is leading the way in addressing this with our range of recombinant monoclonal antibodies and knockout edited cell lines for gold-standard validation. Please check that this product meets your needs before purchasing.

If you have any questions, special requirements or concerns, please send us an inquiry and/or contact our Support team ahead of purchase. Recommended alternatives for this product can be found below, along with publications, customer reviews and Q&As

Properties

<b>Form</b>	Liquid
<b>Storage instructions</b>	Shipped at 4°C. Upon delivery aliquot. Store at -20°C or -80°C. Avoid freeze / thaw cycle.
<b>Storage buffer</b>	pH: 7.00 Preservative: 0.01% Thimerosal (merthiolate) Constituents: 1.21% Tris, 0.75% Glycine, 20% Glycerol (glycerin, glycerine)
<b>Purity</b>	Immunogen affinity purified
<b>Clonality</b>	Polyclonal
<b>Isotype</b>	IgG

## Applications

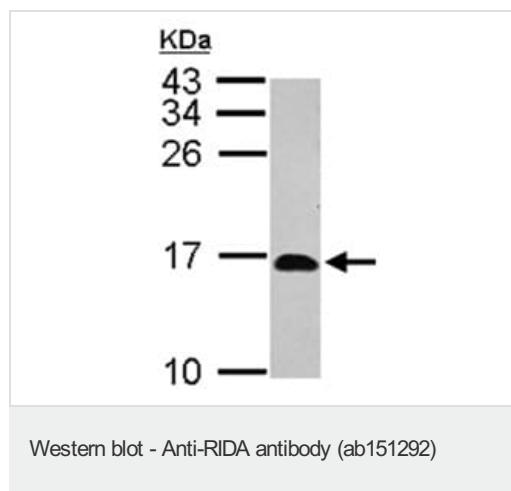
**The Abpromise guarantee** Our [Abpromise guarantee](#) covers the use of ab151292 in the following tested applications. The application notes include recommended starting dilutions; optimal dilutions/concentrations should be determined by the end user.

Application	Abreviews	Notes
WB		1/500 - 1/3000. Predicted molecular weight: 14 kDa.
IHC-P		1/500 - 1/3000. Perform heat mediated antigen retrieval with citrate buffer pH 6 before commencing with IHC staining protocol.

## Target

<b>Function</b>	Endoribonuclease responsible for the inhibition of the translation by cleaving mRNA. Inhibits cell-free protein synthesis. Cleaves phosphodiester bonds only in single-stranded RNA.
<b>Tissue specificity</b>	Hepatocytes and renal distal tubular epithelial cells. Only weak expression in other tissues.
<b>Sequence similarities</b>	Belongs to the RutC family.
<b>Developmental stage</b>	Up-regulated during cellular differentiation.
<b>Cellular localization</b>	Cytoplasm. Nucleus. Mostly cytoplasmic but, in less differentiated cells occasionally nuclear.

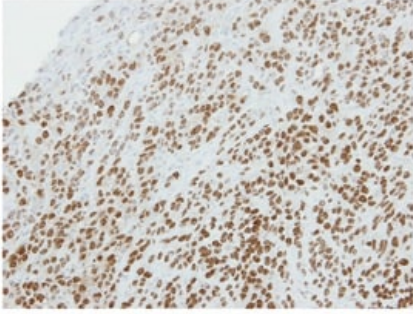
## Images



Anti-RIDA antibody (ab151292) at 1/2000 dilution + HCT116 whole cell lysate at 30  $\mu$ g

**Predicted band size:** 14 kDa

15% SDS PAGE.



Immunohistochemical analysis of paraffin-embedded Human DLD1 xenograft tissue labeling RIDA with ab151292 at 1/500 dilution.

Immunohistochemistry (Formalin/PFA-fixed paraffin-embedded sections) - Anti-RIDA antibody (ab151292)

**Please note:** All products are "FOR RESEARCH USE ONLY. NOT FOR USE IN DIAGNOSTIC PROCEDURES"

### **Our Abpromise to you: Quality guaranteed and expert technical support**

---

- Replacement or refund for products not performing as stated on the datasheet
- Valid for 12 months from date of delivery
- Response to your inquiry within 24 hours
  
- We provide support in Chinese, English, French, German, Japanese and Spanish
- Extensive multi-media technical resources to help you
- We investigate all quality concerns to ensure our products perform to the highest standards

If the product does not perform as described on this datasheet, we will offer a refund or replacement. For full details of the Abpromise, please visit <https://www.abcam.com/abpromise> or contact our technical team.

### **Terms and conditions**

---

- Guarantee only valid for products bought direct from Abcam or one of our authorized distributors