


Product datasheet

Anti-Rif1 antibody ab13422

★★★★★ 1 Abreviews 6 References 1 Image

Overview

Product name	Anti-Rif1 antibody
Description	Rabbit polyclonal to Rif1
Host species	Rabbit
Specificity	The immunogen sequence for ab13422 represents the C-terminal end of mouse Rif1, mouse telomere-associated protein RIF1 and mouse Rap1-interacting factor.
Tested applications	Suitable for: IP, ELISA, WB
Species reactivity	Reacts with: Mouse Predicted to work with: Rat, Cow, Dog, Human 
Immunogen	Synthetic peptide corresponding to Mouse Rif1 aa 2405-2419 (C terminal) conjugated to keyhole limpet haemocyanin. Sequence: C-RNLQSRWRSPAHENS

Database link: [Q6PR54](#)

 [Run BLAST with](#)

 [Run BLAST with](#)

General notes

The Life Science industry has been in the grips of a reproducibility crisis for a number of years. Abcam is leading the way in addressing this with our range of recombinant monoclonal antibodies and knockout edited cell lines for gold-standard validation. Please check that this product meets your needs before purchasing.

If you have any questions, special requirements or concerns, please send us an inquiry and/or contact our Support team ahead of purchase. Recommended alternatives for this product can be found below, along with publications, customer reviews and Q&As

Properties

Form	Liquid
Storage instructions	Shipped at 4°C. Upon delivery aliquot and store at -20°C. Avoid freeze / thaw cycles.
Storage buffer	Preservative: 0.01% Sodium azide Constituents: 0.42% Potassium phosphate, 0.87% Sodium chloride
Purity	Immunogen affinity purified
Clonality	Polyclonal

Isotype IgG

Applications

The Abpromise guarantee Our [Abpromise guarantee](#) covers the use of ab13422 in the following tested applications.

The application notes include recommended starting dilutions; optimal dilutions/concentrations should be determined by the end user.

Application	Abreviews	Notes
IP		
ELISA		
WB	★★★★☆ (1)	

Application notes

ELISA: 1/5000 - 1/40000.

IP: Use at an assay dependent dilution (PMID 19000314).

WB: 1/500 - 1/3000. Detects a band of approximately 265 kDa (predicted molecular weight: 265 kDa).

Not yet tested in other applications.

Optimal dilutions/concentrations should be determined by the end user.

Target

Function

Required for checkpoint mediated arrest of cell cycle progression in response to DNA damage during S-phase (the intra-S-phase checkpoint). This checkpoint requires activation of at least 2 parallel pathways by the ATM kinase: one involves the MRN (MRE11A-RAD50-NBS1) complex, while the second requires CHEK2. RIF1 seems to act independently of both these pathways. Seems to play no role in either the G1/S or G2/M DNA damage checkpoints.

Tissue specificity

Highly expressed in testis.

Developmental stage

Expression peaks in late G2/S phase of the cell cycle.

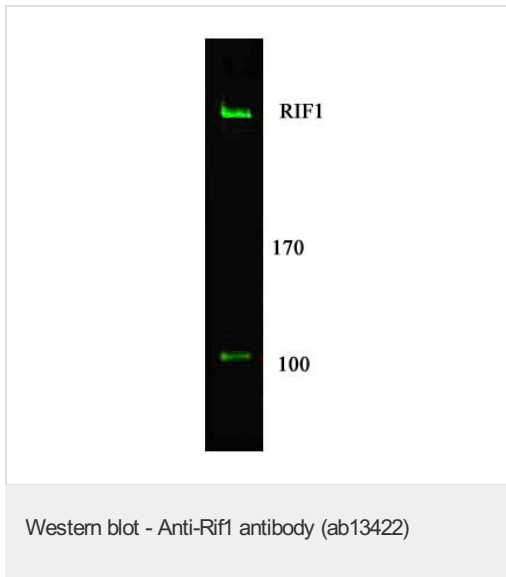
Post-translational modifications

Phosphorylated upon DNA damage, probably by ATM or ATR.

Cellular localization

Nucleus. Chromosome > telomere. Cytoplasm > cytoskeleton > spindle. Exhibits ATM- and TP53BP1-dependent localization to uncapped or aberrant telomeres and to DNA double strand breaks (DSBs). Does not associate with normal telomere structures. Localizes to microtubules of the midzone of the mitotic spindle during anaphase, and to condensed chromosomes in telophase.

Images



Anti-Rif1 antibody (ab13422) at 1 µg/ml + 25 µg of MEF whole cell lysate

Secondary

IRDye™800 conjugated goat anti rabbit IgG (H&L) incubated for 45 minutes at 1/10000 dilution

Predicted band size: 265 kDa

Additional bands at: 100 kDa. We are unsure as to the identity of these extra bands.

Please note: All products are "FOR RESEARCH USE ONLY. NOT FOR USE IN DIAGNOSTIC PROCEDURES"

Our Abpromise to you: Quality guaranteed and expert technical support

- Replacement or refund for products not performing as stated on the datasheet
- Valid for 12 months from date of delivery
- Response to your inquiry within 24 hours

- We provide support in Chinese, English, French, German, Japanese and Spanish
- Extensive multi-media technical resources to help you
- We investigate all quality concerns to ensure our products perform to the highest standards

If the product does not perform as described on this datasheet, we will offer a refund or replacement. For full details of the Abpromise, please visit <https://www.abcam.com/abpromise> or contact our technical team.

Terms and conditions

- Guarantee only valid for products bought direct from Abcam or one of our authorized distributors