

Product datasheet

Anti-RILPL2 antibody ab174744

1 Image

Overview

<b>Product name</b>	Anti-RILPL2 antibody
<b>Description</b>	Rabbit polyclonal to RILPL2
<b>Host species</b>	Rabbit
<b>Tested applications</b>	<b>Suitable for:</b> IHC-P, WB
<b>Species reactivity</b>	<b>Reacts with:</b> Human
<b>Immunogen</b>	Synthetic peptide within Human RILPL2 (internal sequence). The exact sequence is proprietary. 16 amino acid peptide long Database link: <a href="#">Q969X0</a>
<b>Positive control</b>	Human Placenta

Properties

<b>Form</b>	Liquid
<b>Storage instructions</b>	Shipped at 4°C. Store at +4°C short term (1-2 weeks). Upon delivery aliquot. Store at -20°C long term. Avoid freeze / thaw cycle.
<b>Storage buffer</b>	Preservative: 0.02% Sodium azide Constituent: 99% PBS
<b>Purity</b>	Immunogen affinity purified
<b>Clonality</b>	Polyclonal
<b>Isotype</b>	IgG

Applications

Our [Abpromise guarantee](#) covers the use of **ab174744** in the following tested applications.

The application notes include recommended starting dilutions; optimal dilutions/concentrations should be determined by the end user.

Application	Abreviews	Notes
IHC-P		Use a concentration of 5 µg/ml.
WB		Use a concentration of 1 - 2 µg/ml. Predicted molecular weight: 24 kDa.

## Target

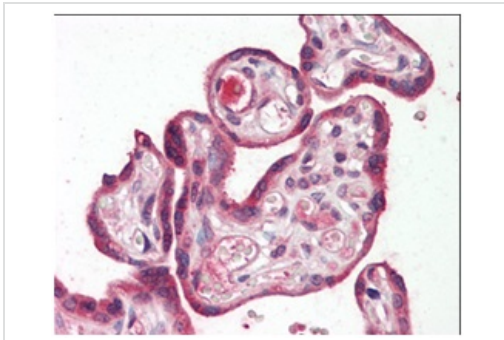
---

<b>Function</b>	Does not regulate lysosomal morphology and distribution.
<b>Tissue specificity</b>	Widely expressed. Expressed at higher level in lung.
<b>Sequence similarities</b>	Belongs to the RILPL family. Contains 1 RILP-like domain.
<b>Cellular localization</b>	Cytoplasm > cytosol.

---

## Images

---



Immunohistochemical analysis of formalin-fixed, paraffin-embedded Human placenta labeling RILPL2 using ab174744 at 5 µg/ml.

Immunohistochemistry (Formalin/PFA-fixed paraffin-embedded sections) - Anti-RILPL2 antibody (ab174744)

**Please note:** All products are "FOR RESEARCH USE ONLY AND ARE NOT INTENDED FOR DIAGNOSTIC OR THERAPEUTIC USE"

## Our Abpromise to you: Quality guaranteed and expert technical support

---

- Replacement or refund for products not performing as stated on the datasheet
- Valid for 12 months from date of delivery
- Response to your inquiry within 24 hours
- We provide support in Chinese, English, French, German, Japanese and Spanish
- Extensive multi-media technical resources to help you
- We investigate all quality concerns to ensure our products perform to the highest standards

If the product does not perform as described on this datasheet, we will offer a refund or replacement. For full details of the Abpromise, please visit <https://www.abcam.com/abpromise> or contact our technical team.

## Terms and conditions

---

- Guarantee only valid for products bought direct from Abcam or one of our authorized distributors