

## Product datasheet

# Anti-RIN1 (phospho S351) antibody [EPR2734(2)] ab172976

Recombinant RabMAb

2 Images

### Overview

<b>Product name</b>	Anti-RIN1 (phospho S351) antibody [EPR2734(2)]
<b>Description</b>	Rabbit monoclonal [EPR2734(2)] to RIN1 (phospho S351)
<b>Host species</b>	Rabbit
<b>Specificity</b>	ab172976 only detects RIN1 phosphorylated at Serine 351.
<b>Tested applications</b>	<b>Suitable for:</b> WB <b>Unsuitable for:</b> Flow Cyt, ICC/IF, IHC-P or IP
<b>Species reactivity</b>	<b>Reacts with:</b> Human
<b>Immunogen</b>	Synthetic peptide (the amino acid sequence is considered to be commercially sensitive) within Human RIN1 aa 300-400 (phospho S351) (Cysteine residue). The exact sequence is proprietary. Database link: <a href="#">Q13671</a>
<b>Positive control</b>	HeLa cell lysate, treated with Okadaic Acid and Calyculin A.
<b>General notes</b>	<p>Mouse, Rat: We have preliminary internal testing data to indicate this antibody may not react with these species. Please contact us for more information.</p> <p>This product is a recombinant monoclonal antibody, which offers several advantages including:</p> <ul style="list-style-type: none"> <li>- High batch-to-batch consistency and reproducibility</li> <li>- Improved sensitivity and specificity</li> <li>- Long-term security of supply</li> <li>- Animal-free production</li> </ul> <p>For more information <a href="#">see here</a>.</p> <p>Our RabMAb<sup>®</sup> technology is a patented hybridoma-based technology for making rabbit monoclonal antibodies. For details on our patents, please refer to <a href="#">RabMAb<sup>®</sup> patents</a>.</p> <p>Reproducibility is key to advancing scientific discovery and accelerating scientists' next breakthrough.</p> <p>Abcam is leading the way with our range of recombinant antibodies, knockout-validated antibodies and knockout cell lines, all of which support improved reproducibility.</p> <p>We are also planning to innovate the way in which we present recommended applications and species on our product datasheets, so that only applications &amp; species that have been tested in our own labs, our suppliers or by selected trusted collaborators are covered by our Abpromise<sup>™</sup> guarantee.</p>

In preparation for this, we have started to update the applications & species that this product is Abpromise guaranteed for.

We are also updating the applications & species that this product has been “predicted to work with,” however this information is not covered by our Abpromise guarantee.

Applications & species from publications and Abreviews that have not been tested in our own labs or in those of our suppliers are not covered by the Abpromise guarantee.

Please check that this product meets your needs before purchasing. If you have any questions, special requirements or concerns, please send us an inquiry and/or contact our Support team ahead of purchase. Recommended alternatives for this product can be found below, as well as customer reviews and Q&As.

## Properties

---

<b>Form</b>	Liquid
<b>Storage instructions</b>	Shipped at 4°C. Store at +4°C short term (1-2 weeks). Upon delivery aliquot. Store at -20°C long term. Avoid freeze / thaw cycle.
<b>Storage buffer</b>	pH: 7.20 Preservative: 0.01% Sodium azide Constituents: 9% PBS, 40% Glycerol (glycerin, glycerine), 0.05% BSA, 50% Tissue culture supernatant
<b>Purity</b>	Tissue culture supernatant
<b>Clonality</b>	Monoclonal
<b>Clone number</b>	EPR2734(2)
<b>Isotype</b>	IgG

## Applications

---

Our [Abpromise guarantee](#) covers the use of **ab172976** in the following tested applications.

The application notes include recommended starting dilutions; optimal dilutions/concentrations should be determined by the end user.

Application	Abreviews	Notes
WB		1/10000 - 1/50000. Detects a band of approximately 90 kDa (predicted molecular weight: 84 kDa).

**Application notes** Is unsuitable for Flow Cyt, ICC/IF, IHC-P or IP.

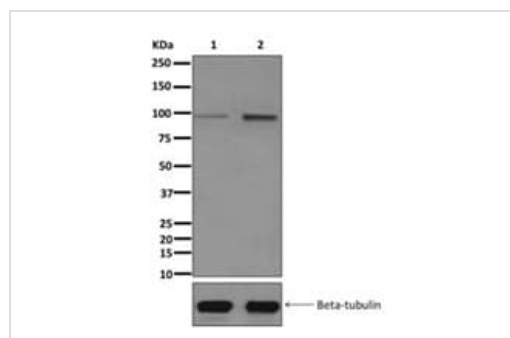
## Target

---

**Relevance** Rin1 is a Ras effector protein which can affect Ras signaling in a variety of ways. It enhances signaling from ABL1 and ABL2 which are involved in regulation of cytoskeletal remodeling. It may function as a guanine nucleotide exchange factor in activation of Rab5a. Rin1 also competes with RAF1 for binding of the activated form of Ras. It may play a role inhibiting the modulation of neuronal plasticity in formation of aversive memory, and has been implicated as a tumor suppressor gene in breast cancer.

**Cellular localization** Cytoplasmic and Plasma membrane

## Images



Western blot - Anti-RIN1 (phospho S351) antibody [EPR2734(2)] (ab172976)

**All lanes :** Anti-RIN1 (phospho S351) antibody [EPR2734(2)] (ab172976) at 10000 µg/ml

**Lane 1 :** HeLa cell lysate, untreated

**Lane 2 :** HeLa cell lysate, treated with Okadaic Acid and Calyculin A

Lysates/proteins at 10 µg per lane.

**Predicted band size:** 84 kDa

Why choose a recombinant antibody?

 <p><b>Research with confidence</b> Consistent and reproducible results</p>	 <p><b>Long-term and scalable supply</b> Recombinant technology</p>
 <p><b>Success from the first experiment</b> Confirmed specificity</p>	 <p><b>Ethical standards compliant</b> Animal-free production</p>

Anti-RIN1 (phospho S351) antibody [EPR2734(2)] (ab172976)

**Please note:** All products are "FOR RESEARCH USE ONLY. NOT FOR USE IN DIAGNOSTIC PROCEDURES"

### Our Abpromise to you: Quality guaranteed and expert technical support

- Replacement or refund for products not performing as stated on the datasheet
- Valid for 12 months from date of delivery
- Response to your inquiry within 24 hours
- We provide support in Chinese, English, French, German, Japanese and Spanish
- Extensive multi-media technical resources to help you
- We investigate all quality concerns to ensure our products perform to the highest standards

If the product does not perform as described on this datasheet, we will offer a refund or replacement. For full details of the Abpromise, please visit <https://www.abcam.com/abpromise> or contact our technical team.

## Terms and conditions

---

- Guarantee only valid for products bought direct from Abcam or one of our authorized distributors